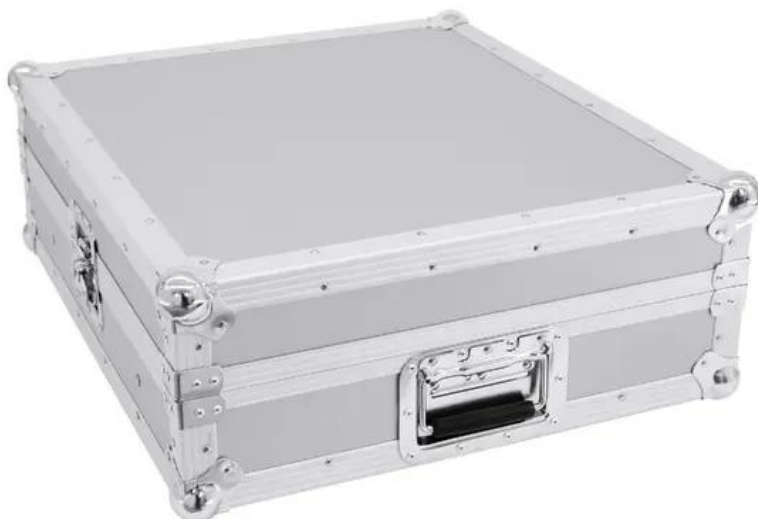


ROADINGER Mixer case Pro MCB-19 sloping silver 12U

PRO flightcase for 483 mm devices (19")

Art.n.: 30111562

GTIN: 4026397307474



Features :

- Suitable for 483 mm units (19"), e.g. controllers and mixers, with 12 U
- Upward tilted profile rails (approx. 13°) for top-operated units
- Interior upholstered with foam (black)
- High-quality workmanship with plywood multilayered glued, aluminum-colored laminated
- Aluminum profile frames (25 mm) with rounded edges
- Removable cover
- Three-leg, medium-sized steel ball corners
- 2 high-quality lockable butterfly locks
- 4 steel-enforced rubber feet
- Padded carrying handle
- Delivery includes mounting screws
- 12 U
- Per maggiori informazioni su questo prodotto, consultare "Download" nella scheda tecnica

Logistica

EAN / GTIN: 4026397307474

Peso : 10,50 kg

Lunghezza : 0.57 m

Larghezza : 0.26 m

Altezza : 0.49 m

Dati tecnici :

Carico massimo:	25 kg
Struttura della custodia:	12 U
Peso:	9,55 kg
Strength:	7 mm
Outside dimensions (W x D x H):	550 x 615 x 240 mm
Inside dimensions:	

Mounting width:	490 mm, 19"
Mounting height:	190 mm
Mounting height front:	90 mm
Mounting depth rear:	180 mm
Mounting depth:	545 mm, 12 u
Outer dimensions/corners:	55 mm

Contenuto della confezione:
