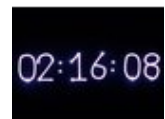


LASERWORLD EL-500RGB KeyTEX

Laser projecteur de texte RGB (500 mW), clavier et contrôle à distance infrarouge

Réf. : 51743205

GTIN: 7640144992217



L'article n'est plus disponible.

Description:

The Laserworld EL-500RGB KeyTEX is a RGB text and pattern projection laser that does not need any software or additional controller for operation. It comes with a special keyboard and an infrared remote control.

With the keyboard it is possible to control the whole show laser light system.

This text laser is equipped with a strong red (650 nm, 180 mW), green (532 nm DPSS, 80 mW) and blue (445 nm, 160 mW) laser source, so the projections are well visible. The scanning systems allows for simple text projections and runs at ca. 15kpps@4°.

The mounting bracket of the EL-500RGB KeyTEX laser can be used to mount the projector at walls, ceilings or at other appropriate objects.

Caractéristiques:

- Write texts live with the keyboard
- Save texts and recall them later
- Animate the texts: scrolling, flipping, typing of single letters, rotations and many more features available through the keyboard
- Trigger saved texts with infrared remote control
- Play the preset patterns and effects in automatic mode or sound mode - this can be switched with the keyboard or the infrared remote control
- Clock feature: set time and project it on any surface
- The projection (texts, patterns) can be multiplied through a diffraction grating at the laser aperture
- Controllable via DMX
- RGB projections
- Included in delivery are:

Logistique

EAN / GTIN: 7640144992217

Poids: 2,75 kg

Longueur: 0.32 m

Largeur: 0.25 m

Hauteur: 0.19 m

- EL-500RGB KeyTEX laser projector
- Keyboard for EL-500RGB KeyTEX
- USB extension cable for keyboard
- Infrared remote control
- Interlock adapter
- Keys for the key switch
- External power supply
- Commandé via stand-alone; DMX; Télécommande infrarouge; Commande de la musique

L'étendue des fournitures

- 1 x télécommande, 1 x laser, 1 x bloc d'alimentation externe, 1 x mode d'emploi, 1 x clé, 1 x interlock

Données techniques:

Alimentation électrique:	100-240 V CA, 50/60 Hz
Puissance totale de raccordement:	10 W
Type de protection:	IP20
Branchement électrique:	Alimentation électrique via Appareils froids (M) version encastrable
Classe laser:	3B
Couleur du laser:	R/G/B
Module laser:	Rouge (R) 180 mW 650 nm Vert (G) 80 mW 532 nm B bleu 160 mW 445 nm
Commande:	Stand-alone; DMX; Télécommande infrarouge; Commande de la musique
Couleur du boîtier:	Noir
Dimension:	Largeur : 16,5 cm Profondeur : 21 cm Hauteur : 8,5 cm
Poids:	1,64 kg