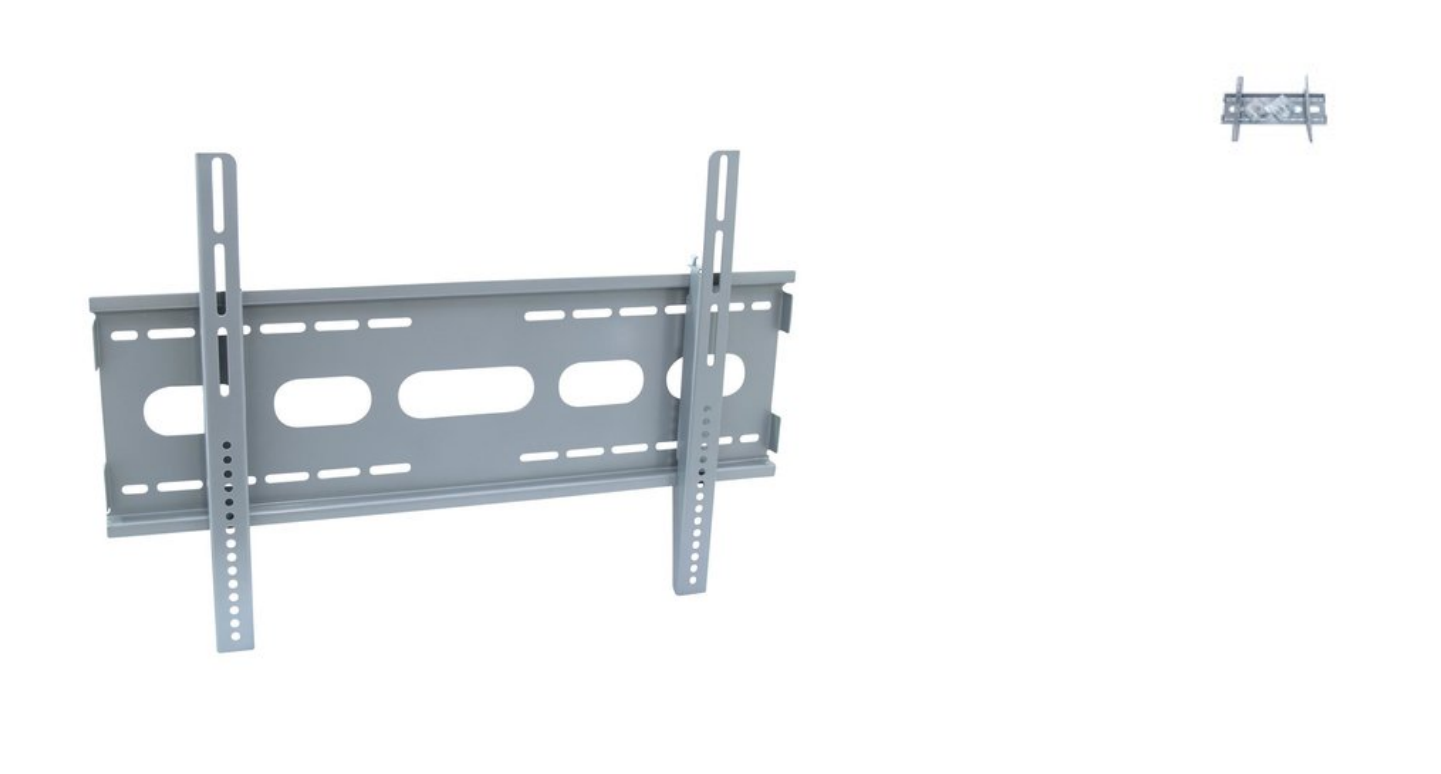


EUROLITE LCH-36/55 Wall Mount for Monitors

Wall mount

Art. No.: 81012410

GTIN: 4026397295474



The article is no longer in our assortment.

Features:

- Wall mount for LCD monitors with a diagonal screen size of 510 mm (36") to 710 mm (55")
- Stable metal version
- VESA standard
- Mounting materials included in the delivery

Logistic

EAN / GTIN: 4026397295474
Weight: 4,40 kg
Length: 0.79 m
Width: 0.26 m
Heigth: 0.06 m

Technical specifications:

Distance to wall:	50 mm
Dimensions:	Width: 76 cm Depth: 5 cm Height: 51 cm
Weight:	3,85 kg
Maximum load BGV C1 (8-fold):	30 kg
Interface dimensions:	710 x 510 mm
Distance to wall:	50 mm
Dimensions:	760 x 510 x 50 mm