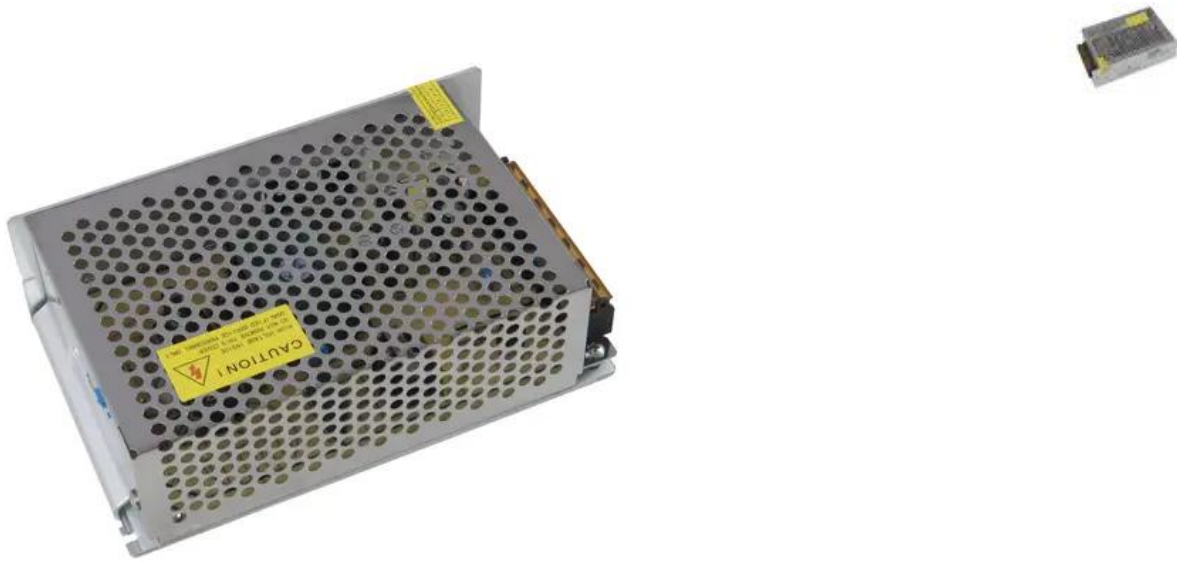


EUROLITE Electronic Transformer, 5V, 20A

Stabilized LED power supply unit DC 5 V, 20 A

Art. No.: 51402245

GTIN: 4026397688764



The article is no longer in our assortment.

Features:

- Indoor use only
- Input voltage AC 100-240 V
- Output voltage DC 5 V, 20 A
- Protected against short circuit, overload, overheating and overvoltage
- Noise filter
- Connection via open cable ends

Logistic

EAN / GTIN: 4026397688764
Weight: 0,40 kg
Length: 0.17 m
Width: 0.11 m
Heigh: 0.06 m

Technical specifications:

IP classification:	IP20
Power connection:	Mains input via screw terminal
Power output:	2 x screw terminal
Dimensions:	Width: 10 cm Depth: 16 cm Height: 5 cm
Weight:	0,37 kg