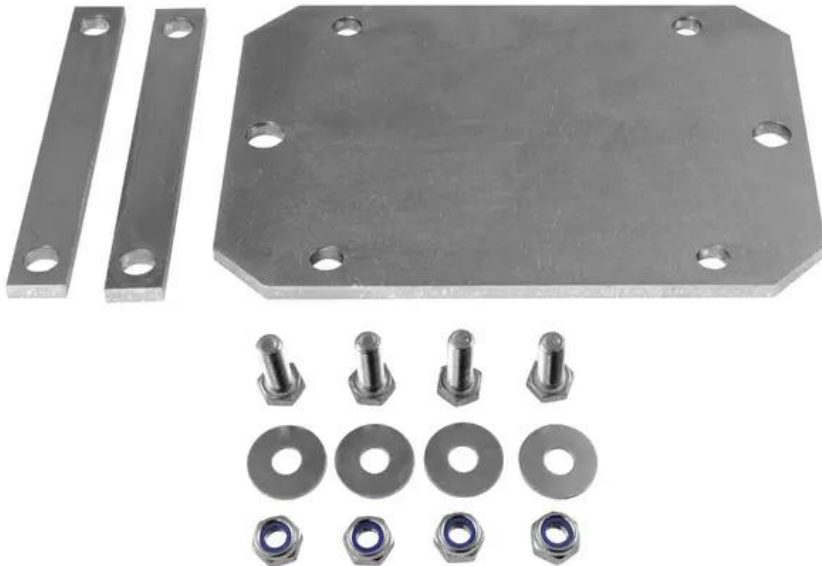


EUROLITE Mounting Set MD-1015/MD-1030/MD-1515

Practical mount

Art. No.: 50301586

GTIN:



Features:

- Truss mount for one EUROLITE MD-1515/MD-1030/MD-1015 mirrorball motor
- The mirrorball motor is easily clamped on the truss mount
- Made in Europe
- **EUROLITE Screw Set for MD Mounting Plates**
- **Complete set (4 x screw, 4 x nut, 4 x washer)**
- Screw: Hexagon screw M8 x25 DIN933 galvanized
- Nut: Self-locking nut class 8 M8 DIN 934 electrogalvanized
- Washer: size 8.4 DIN125 electrogalvanized

Logistic

Technical specifications:

Dimensions: Depth: 12 cm
Height: 2.5 cm

EUROLITE Mounting Plate MD-1015/MD-1030/MD-1515

Maximum load WLL (4-fold): 24 kg

Material: Steel

Dimensions: Width: 16 cm

Depth: 13 cm

Height: 1 cm

Weight:

0.91 kg

EUROLITE Screw Set for MD Mounting Plates

Weight:

0.10 kg

Scope of delivery:
