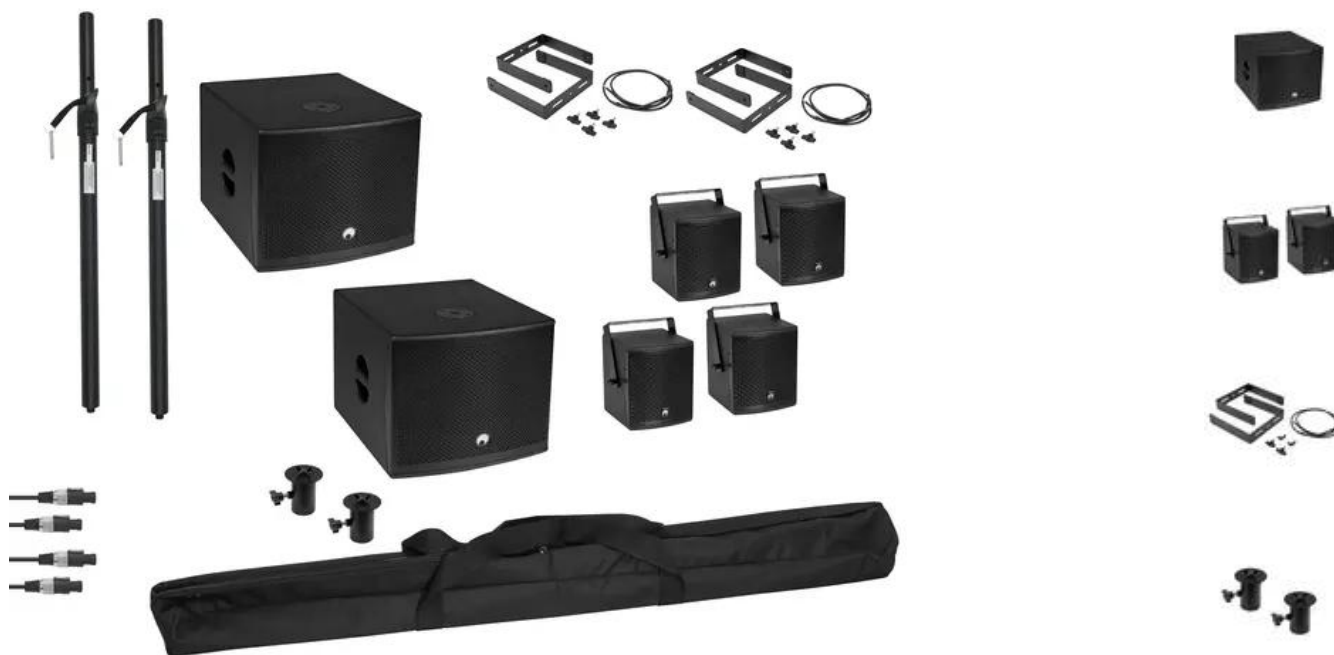


## OMNITRONIC Big Molly Set

Art. No.: 20000862

GTIN: 4026397691559



**List price: 1783.81 €**

incl. 19% VAT.

### Features:

#### OMNITRONIC MOLLY-12A Subwoofer active black

Active 12" subwoofer with DSP and Bluetooth

- 12" bassreflex subwoofer with DSP and 700 watts RMS power
- Flexibly extendable with MOLLY-6 satellites for 2.1 and 4.1 configurations
- DSP-controlled class D amplifier (500 W + 2 x 100 W)
- Separate volume control for subwoofer and satellites
- Stereo/mono selection
- Digital signal processor
- The device is cooled by temperature-controlled fan
- Control via Bluetooth
- For application areas such as: Mobile djs / entertainer; Trade fair and shop fitting; installation; home entertainment; restaurants, bars and hotels; product presentations and lectures
- 2 Rugged carrying handles
- Black metal grille with acoustic foam
- DSP presets: FLAT; DJ; LIVE; VOICE
- Operating range up to 10m

#### Package contents

- 1 x bass, 1 x power cord, 2 x speaker cable, 1 x user manual, 1 x declaration of conformity

### Logistic

EAN / GTIN: 4026397691559

Weight: 75,00 kg

Length: 1.20 m

Width: 0.80 m

Height: 0.50 m

Bulky product

#### OMNITRONIC MOLLY-6 Top black 2x

6.5" satellite speakers with bracket

- 8-ohm speaker pair with 6.5" woofer and 1" tweeter
- For use with MOLLY-12A subwoofers for 2.1 and 4.1 configurations
- Optional stand adaptor required for stand mounting

- Extension U-bracket and cable available for connecting 2 satellite speakers
- With mounting bracket
- With rigging points
- Black metal grille with acoustic foam
- 2 pieces per set
- For application areas such as: Mobile djs / entertainer; Trade fair and shop fitting; installation; home entertainment; restaurants, bars and hotels; product presentations and lectures

**Package contents**

- 2 x top, 2 x mounting bracket, 4 x knurled screw, 2 x screw plug-in terminal

**OMNITRONIC MOLLY-6 Extension Bracket black 2x****Package contents**

- 2 x mounting bracket, 2 x speaker cable, 1 x knurled screw, 1 x nut

**OMNITRONIC BOB-4 Stand Adaptor black 2x**

Adapter with stand sleeve for 35 mm tube, M8 thread**Package contents**

- 2 x holder

**OMNITRONIC BOB Transport Bag for Tripod/Distance Tube**

Accessory for the BOB series

- Suitable for stands and distance tubes
- Made of easy-care artificial black textile
- High-quality workmanship with textile , black

**Package contents**

- 1 x bag

**OMNITRONIC Distance Tube Subwoofer/Satellite M20**

Variable distance tube, M20 thread, height adjustable 75-130 cm, max. load 30 kg

- Connecting tube for satellite systems
- Locking screw and bolt
- Powder-coated steel version
- Adjustable height
- M20 thread

**Package contents**

- 1 x distance tube, 1 x user manual

**OMNITRONIC Speaker Cable Speaker 2x1.5 5m bk****Package contents**

- 1 x speaker cable

**Technical specifications:**

Weight: 67,52 kg

**OMNITRONIC MOLLY-12A Subwoofer active black**

Power supply: 230 V AC, 50 Hz

Power consumption: 1000 W

Protection class: Protection class I

Output power: 1 x 500 W RMS  
2 x 100 W RMS (8 ohms)

	2 x 200 W RMS (4 ohms)
Power connection:	Mains input via IEC connector (M) mounting version power supply cord with safety plug (provided)
Device fuse:	5 x 20 mm, T 5 A fuse replaceable
Frequency range:	40 - 160 Hz
Sensitivity:	103 dB
Max. SPL:	128 dB
DSP:	Digital signal processor
DSP presets:	FLAT; DJ; LIVE; VOICE
Cooling:	Temperature-controlled fan
Control:	Bluetooth
Bluetooth device name:	Omnitronic
Range:	Range up to 10m
Attachment system:	Flange: M20 thread
Circuitry:	Class D
Control elements:	Phase reversal switch, level control per channel, power switch, connect
Controls:	Softstart; short-circuit; limiter; Overvoltage; overheat
Status LED:	Signal, power, limit, fault, DSP presets
Connections:	Input: line via 2 x 3-pin XLR/6.35mm jack (F) combination socket (mounting version) Input: line via 1 x 3.5 mm jack (stereo) mounting version Input: line via 1 x stereo RCA Output: line via 2 x 3-pin XLR Output: top via 2 x speaker built-in socket (F)
Input channels:	1 x stereo via combination socket or RCA or Bluetooth, channel control via rotary dial
Speaker:	1 x woofer 12" Basket material: steel Conematerial: cardboard/paper Voice coil lows 3"
Type of speaker:	Subwoofer
Type of construction:	Vented
Carrying handle:	2 pc/pcs
Material:	Birch multiplex
Color:	Black, textured coating, painted
Dimensions:	Width: 47 cm Depth: 57 cm Height: 40 cm
Weight:	22,10 kg
Speaker cable	
Cable length:	3 m

## OMNITRONIC MOLLY-6 Top black 2x

Power: Program: 260W

	Rated: 130W RMS
Frequency range:	150 - 20000 Hz
Sensitivity:	95 dB (1W/1m)
Max. SPL:	119 dB
Impedance:	8 ohms
Attachment system:	2x mounting bracket
Flying points:	2 x M8 thread
Connections:	1 x speaker built-in socket (F) 1 x screw plug-in terminal
Speaker:	1 x woofer 6,5" Basket material: steel Voice coil lows 1" 1 x tweeter 1"
Type of speaker:	On ceiling/on wall speaker; coaxial speaker
Material:	MDF (medium density fiberboard)
Color:	Black, textured coating, painted
Dimensions:	Width: 18,3 cm Depth: 21,4 cm Height: 23 cm
Weight:	8,90 kg

#### OMNITRONIC MOLLY-6 Extension Bracket black 2x

Color:	Black, matte, painted
Weight:	1,20 kg

#### OMNITRONIC BOB-4 Stand Adaptor black 2x

Maximum carrying capacity:	30 kg
Type (general stands):	Accessory
Material:	Steel (powder-coated)
Color:	Black
Weight:	0,38 kg

#### OMNITRONIC BOB Transport Bag for Tripod/Distance Tube

Material:	Textile
Color:	Black
Dimensions:	Width: 106 cm Depth: 9 cm Height: 7 cm
Weight:	0,19 kg

#### OMNITRONIC Distance Tube Subwoofer/Satellite M20

Maximum carrying capacity:	30 kg
----------------------------	-------

Tube diameter sector:	41 - 35 mm
Height:	Maximum: 130 cm Minimum: 75 cm
Attachment system:	Ø 35mm
Type (general stands):	Distance tube
Color:	Black
Thread:	M20 thread
Weight:	0,90 kg

#### **OMNITRONIC Speaker Cable Speaker 2x1.5 5m bk**

Cable construction:	2 x 1,5 mm² speaker cable
Cable length:	5 m
Plug A:	1 x 2-pin speaker (M)
Plug B:	1 x 2-pin speaker (M)
Color:	Black
Weight:	0,37 kg