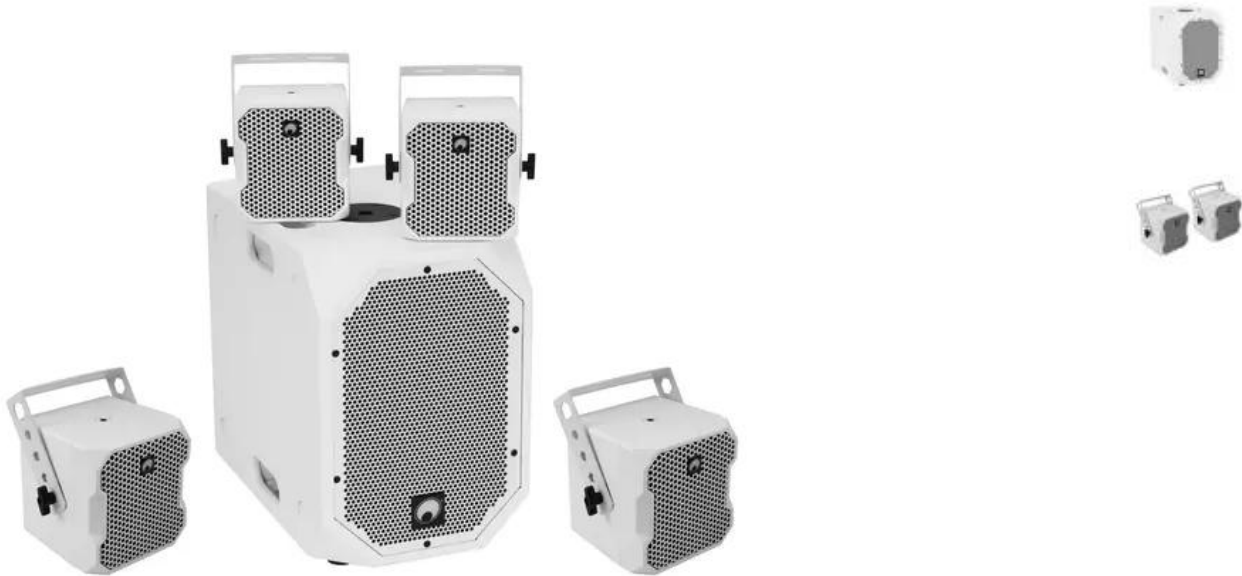


OMNITRONIC Set BOB-10A wh + 4x BOB-4 wh

BOB-10A Subwoofer active including 4 x 4" satellite speakers BOB-4

Art. No.: 20000536

GTIN:



List price: 796.11 €

incl. 19% VAT.

Features:

OMNITRONIC BOB-10A Subwoofer active white

10" subwoofer with DSP and Bluetooth for the BOB series

- 10" bassreflex subwoofer with DSP and 900 watts RMS power
- Flexibly extendable with BOB-4 satellites for 2.1, 4.1 and 8.1 configurations
- DSP-controlled class D amplifier (300 W + 2 x 300 W)
- Separate volume control for subwoofer and satellites
- Stereo/mono selection
- Digital signal processor
- Control via Bluetooth
- For application areas such as: Mobile djs / entertainer; Trade fair and shop fitting; installation; home entertainment; restaurants, bars and hotels; product presentations and lectures
- 4 Rugged carrying handles
- DSP presets: FLAT; DJ; LIVE; SPEECH
- White metal grille with acoustic foam

Package contents

- 1 x bass, 1 x user manual, 1 x power cord, 2 x speaker cable, 4 x foot, 4 x screw, 1 x declaration of conformity

Logistic

OMNITRONIC BOB-4 Top 16 Ohm white 2x

2 x 4" satellite speakers with bracket for the BOB series

- 16-ohm speaker pair with 4" full-range speaker
- For use with BOB-10A subwoofers for 2.1, 4.1 and 8.1 configurations
- Optional stand adaptor required for stand mounting
- Extension U-bracket and cable available for connecting 2 satellite speakers

- ABS plastic cabinet with M8 and M10 threaded inserts
- With mounting bracket
- White metal grille with acoustic foam
- For application areas such as: Mobile djs / entertainer; Trade fair and shop fitting; installation; home entertainment; restaurants, bars and hotels; product presentations and lectures

Package contents

- 2 x top, 4 x knurled screw, 2 x mounting bracket, 2 x plug (male)

Technical specifications:

Weight:	25,00 kg
---------	----------

OMNITRONIC BOB-10A Subwoofer active white

Power supply:	230 V AC, 50 Hz
Power consumption:	1060 W
Protection class:	Protection class I
Power connection:	Mains input via IEC connector (M) mounting version power supply cord with safety plug (provided)
Power:	Rated: 300W RMS LF Rated: 2x 300W RMS HF
Frequency range:	45 - 250 Hz
Sensitivity:	100 dB
Max. SPL:	125 dB
DSP:	Digital signal processor
DSP presets:	FLAT; DJ; LIVE; SPEECH
Control:	Bluetooth
Bluetooth device name:	Omnitronic BOB
Attachment system:	2x M20 thread
Circuitry:	Class D
Control elements:	Phase reversal switch, level control per channel, power switch, connect, tone control
Controls:	Softstart; short-circuit; limiter; Overvoltage; overheat
Status LED:	Signal, power, limit, fault, DSP presets
Connections:	Input: line via 2 x 3-pin XLR/6.35mm jack (F) combination socket (mounting version) Output: speaker via 2 x speaker built-in socket (F) Output: line via 1 x 3-pin XLR
Input channels:	1 x stereo via combination socket or RCA or Bluetooth, channel control via rotary dial
Speaker:	1 x woofer 10" Basket material: steel Conematerial: cardboard/paper Voice coil lows 2"
Type of speaker:	Subwoofer
Type of construction:	Vented

Carrying handle:	4 pc/pcs
Material:	MDF (medium density fiberboard), 15 mm
Color:	White, textured coating
Dimensions:	Width: 30 cm Depth: 47 cm Height: 43 cm
Weight:	17,00 kg
Speaker cable	
Cable length:	3 m

OMNITRONIC BOB-4 Top 16 Ohm white 2x

Power:	Program: 150W Rated: 75W RMS
Frequency range:	150 - 16000 Hz
Sensitivity:	90 dB (1W/1m)
Max. SPL:	109 dB
Dispersion angle:	120° x 120°
Impedance:	16 ohms
Attachment system:	Mounting bracket
Connections:	Input: speaker via 1 x screw plug-in terminal Input: speaker via 1 x speaker built-in socket (F)
Speaker:	1 x compression tweeter highs 4" 1 x voice coil compression tweeter highs 1"
Color:	White, textured coating, painted
Dimensions:	Width: 15 cm Depth: 16 cm Height: 15,8 cm
Weight:	4,00 kg