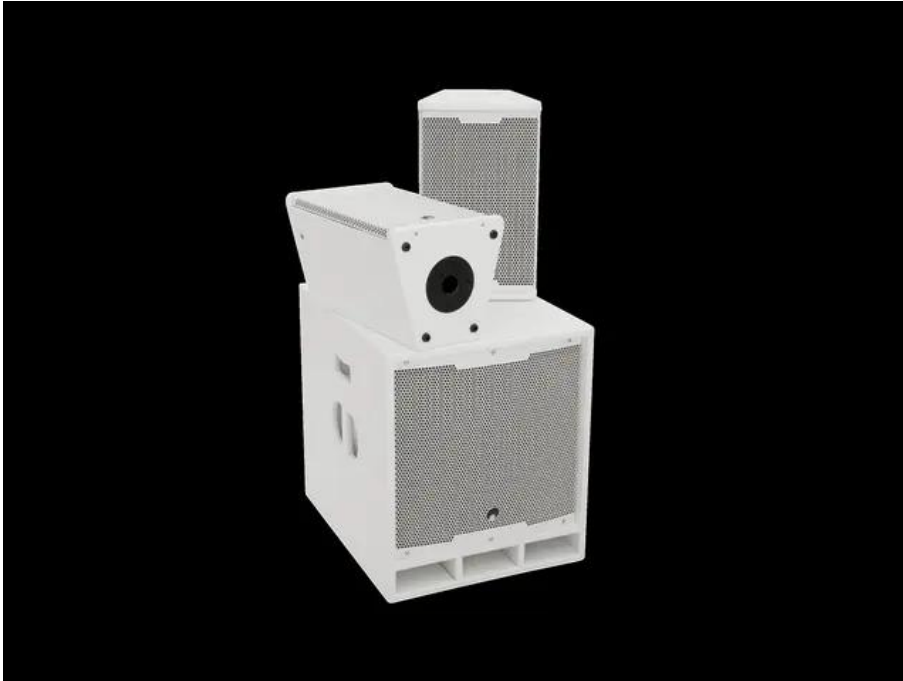


OMNITRONIC MAXX-1508DSP 2.1 Active System white

Powerful active PA system with DSP, Bluetooth, 700 W (15" sub, 8" tops)

Art. No.: 11038846

GTIN: 4026397689600



List price: 950.81 €

incl. 19% VAT.

Features:

Powerful active PA system with DSP, Bluetooth, 700 W (15" sub, 8" tops)

- For application areas such as: Mobile use; mobile djs / entertainer; rental

OMNITRONIC MAXX-1508 2-way Top 2x white

2 x 8" passive full-range speaker, 150 W RMS

- 2-way bass-reflex system with 8" bass-midrange speaker and 1" compression driver
- Serve as a mobile 2.1 system together with the MAXX-1508 subwoofer
- With passive 2-way crossover, PTC tweeter protection
- With rigging points
- Black metal grille
- Application possibility: Standing; suspended; monitoring; on stand
- For application areas such as: Mobile djs / entertainer; rental; mobile use

Package contents

- 2 x top, 2 x speaker cable

Logistic

EAN / GTIN: 4026397689600

Weight: 54,60 kg

Length: 0.60 m

Width: 0.80 m

Height: 1.00 m

Bulky product

OMNITRONIC MAXX-1508DSP 2.1 Active Subwoofer white

Powerful 15" active subwoofer with DSP and Bluetooth, 700 watts

- 15" subwoofer with Class D amplifier in bassreflex cabinet
- Amplifier power: 400 W RMS + 2 x 150 W RMS for two satellites
- Serves as a mobile 2.1 system together with MAXX-1508 2-way tops
- Balanced signal input XLR/6.3 mm jack L/R
- Additional stereo RCA input, with level switch

- Separate volume control for subwoofer and satellites
 - Stereo/mono selection
 - Digital signal processor
 - Control via Bluetooth
 - Wheels optional
 - Black metal grille with acoustic foam
 - DSP presets: FLAT; DJ; LIVE
 - Application possibility: Standing
 - For application areas such as: Mobile djs / entertainer; rental; mobile use
- Package contents**
- 1 x bass, 1 x user manual, 1 x power cord, 1 x strap, 1 x declaration of conformity

Technical specifications:

Weight:	46,60 kg
---------	----------

OMNITRONIC MAXX-1508 2-way Top 2x white

Power:	Program: 300W Rated: 150W RMS
Frequency range:	120 - 18000 Hz
Sensitivity:	92 dB
Max. SPL:	116 dB
Dispersion angle:	90° x 60°
Impedance:	4 ohms
Attachment system:	Flange: Ø 35mm
Flying points:	5 x M8 thread
Connections:	Input: speaker via 1 x speaker built-in socket (F)
Speaker:	1 x woofer 8" 1 x compression tweeter highs 1"
Type of speaker:	Compact cabinet speaker
Material:	, 16 mm; MDF (medium density fiberboard)
Color:	Black, textured coating, painted
Dimensions:	Width: 25,5 cm Depth: 24,1 cm Height: 42,1 cm
Weight:	17,60 kg

OMNITRONIC MAXX-1508DSP 2.1 Active Subwoofer white

Power supply:	230 V AC, 50 Hz
Power consumption:	800 W
Power:	Rated: 400W RMS LF
Frequency range:	35 - 120 Hz bass
Sensitivity:	95 dB
Max. SPL:	120 dB
DSP:	Digital signal processor

DSP presets:	FLAT; DJ; LIVE
Control:	Bluetooth
Attachment system:	M20 thread
Circuitry:	Class D
Controls:	Limiter
Status LED:	Power, signal, limit, pairing, DSP presets
Connections:	Input: 1 x stereo RCA Input: line via 2 x 3-pin XLR/6.35mm jack (F) combination socket (mounting version) Output: line via 2 x 3-pin XLR Output: speaker via 2 x speaker built-in socket (F)
Input channels:	1 x stereo via XLR or RCA or bluetooth, channel control via rotary dial
Speaker:	1 x woofer 15" with ferrit magnet
Type of speaker:	Subwoofer
Type of construction:	Vented
Transport aid:	Wheels optional
Material:	Birch multiplex, 16 mm; MDF (medium density fiberboard)
Color:	Black, textured coating, painted
Dimensions:	Width: 45,4 cm Depth: 57 cm Height: 53,4 cm
Weight:	30,00 kg