

Base socket G-5.3

No. 9450010C



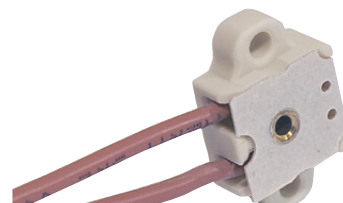
G-6.35 socket

No. 9450012C



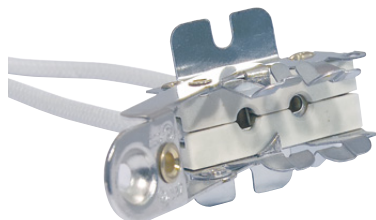
Socket G-4

No. 9450018C



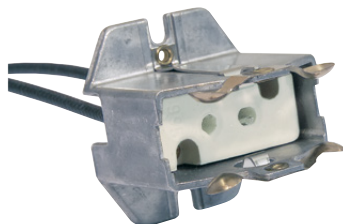
Socket GY-9.5

No. 9450090C



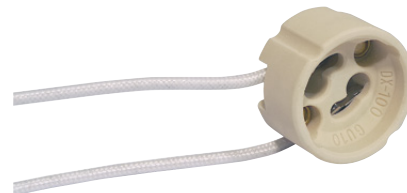
Base socket GX/GY-9.5

No. 9450030C



GU-10 socket

No. 94500120



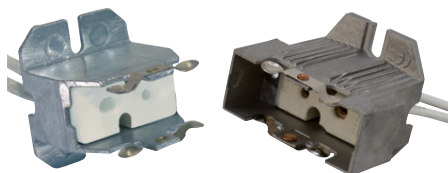
Socket G-16

No. 9450040C

GY-16

No. 9450041C

DX-420A for GY-16



Socket DX-124B

No. 9450045C

for G-22

No. 9450046C

for GY-22



Socket DX-421 for G-38

No. 9450050C



Ceramic lustre terminal

No. 94501000

2 pins with fixation hole



Socket for MSD 250 GY-9.5

No. 94501010

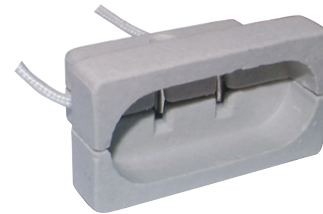
rectangular



Socket for PAR-56/-64

No. 94600100

with cable ends



Socket for PAR-56/64

No. 94600101

with screw clamp



Socket for PAR-56/-64

No. 94600105

with 1m silicone cable



PAR-SAFE only casing

No. 94600200

Socket GX-16d completely isolated



PAR-SAFE complete casing, socket and cable

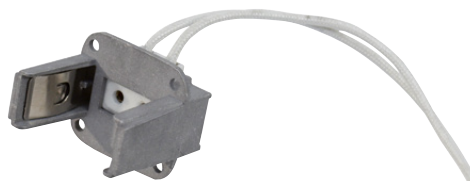
No. 94600210

Socket GX-16d



Socket DX-123H for G-9.5

No. 94600300



Socket DX-419 for GX-9.5

No. 94600350

