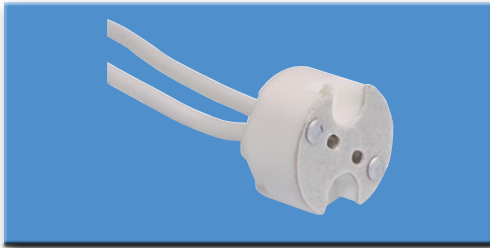
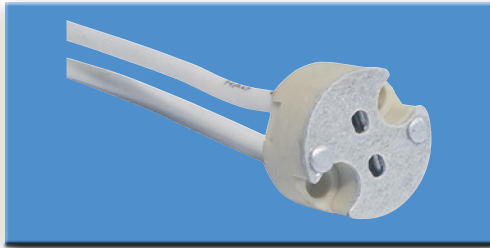


**SOCKETS FOR LAMPS AND PAR-SAFES**

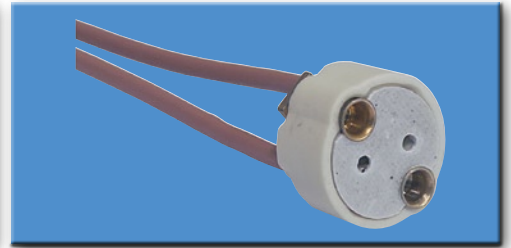
**Base socket G-5.3**  
No. 9450010C



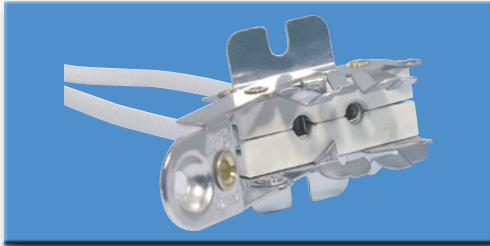
**G-6.35 socket**  
No. 9450012C



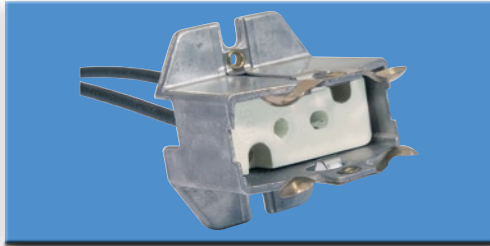
**Socket G-6.35**  
No. 9450020C with thread M3



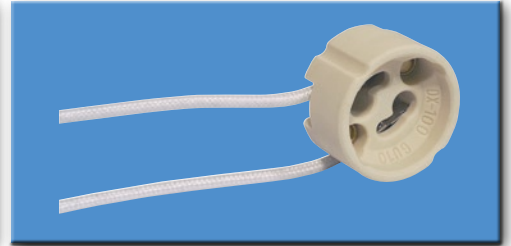
**Socket GY-9.5**  
No. 9450090C



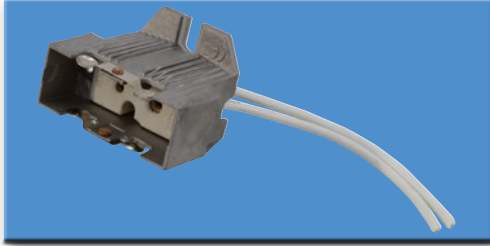
**Base socket GX/GY-9.5**  
No. 9450030C



**GU-10 socket**  
No. 94500120



**Socket DX-420A for GY-16**  
No. 9450041C



**Socket DX-124B for G22**  
No. 9450045C



**Socket DX-421 for G-38**  
No. 9450050C



**Ceramic lustre terminal**  
No. 94501000 2 pins with fixation hole



**Socket for MSD 250 GY-9.5**  
No. 94501010 rectangular



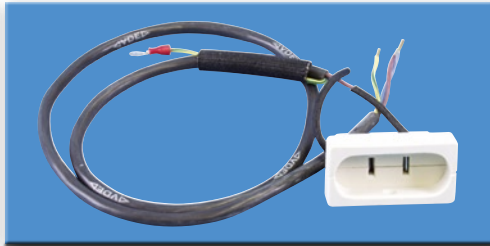
**Socket for PAR-56/-64**  
No. 94600100 with cable ends



**Socket for PAR-56/64**  
No. 94600101 with screw clamp



**Socket for PAR-56/-64**  
No. 94600105 with 1m silicone cable



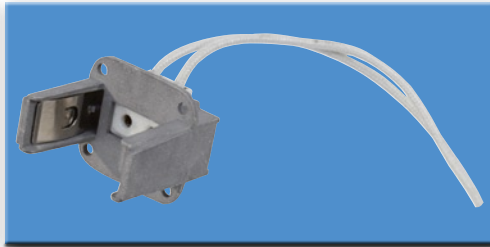
**PAR-SAFE only casing**  
No. 94600200 Socket GX-16d completely isolated



**PAR-SAFE complete casing, socket and cable**  
No. 94600210 Socket GX-16d



**Socket DX-123H for G-9.5**  
No. 94600300



**Socket DX-419 for GX-9.5**  
No. 94600350

