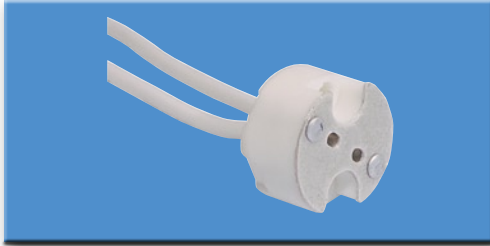


LAMPENSOCKEL und PAR-SICHERUNGEN

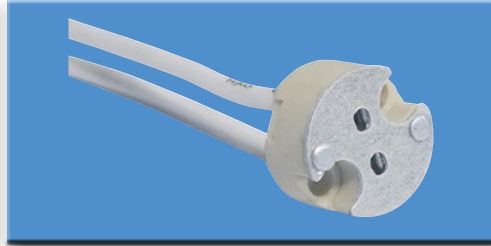
Socket G-5,3

Best.-Nr. 9450010C



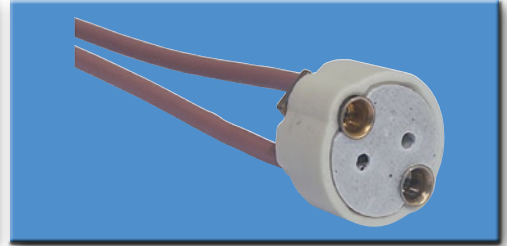
Socket G-6,35

Best.-Nr. 9450012C



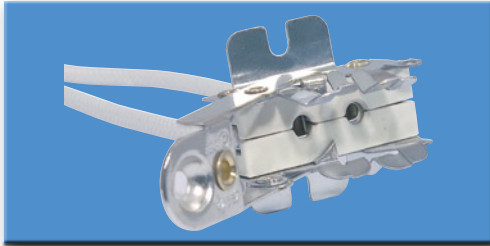
Socket G-6,35

Best.-Nr. 9450020C mit Gewinde M3



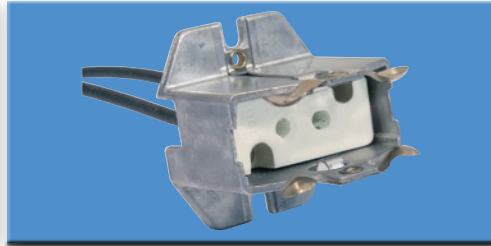
Socket GY-9,5

Best.-Nr. 9450090C



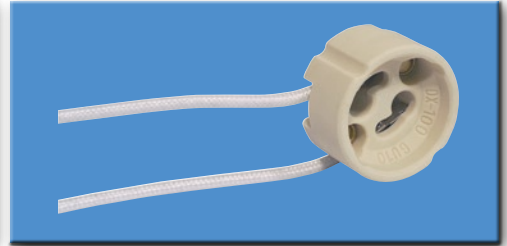
Socket GX/GY-9,5

Best.-Nr. 9450030C



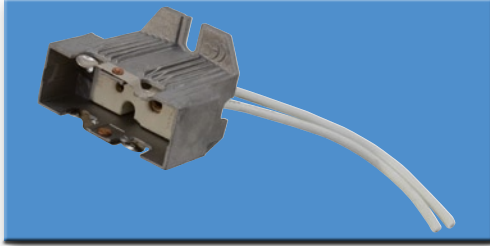
Socket GU-10

Best.-Nr. 94500120



Socket DX-420A für GY-16

Best.-Nr. 9450041C



Socket DX-124B für G22

Best.-Nr. 9450045C



Socket DX-421 für G-38

Best.-Nr. 9450050C



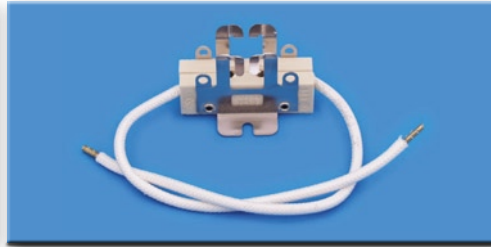
Keramiklüsterklemme

Best.-Nr. 94501000 2-pol mit Befestigungsloch



Socket für MSD 250 GY-9,5

Best.-Nr. 94501010 rechteckig



Socket für PAR-56/-64

Best.-Nr. 94600100 mit Kabelenden



Socket für PAR-56/64

Best.-Nr. 94600101 mit Schraubklemme



Socket für PAR-56/PAR-64

Best.-Nr. 94600105 mit 1m Siliconkabel



PAR-SAFE nur Gehäuse

Best.-Nr. 94600200 GX-16d komplett isoliert



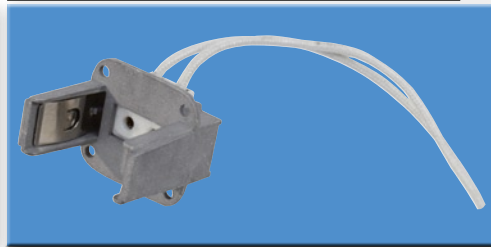
PAR-SAFE kompl. Gehäuse,Socket & Kabel

Best.-Nr. 94600210 Socket GX-16d



Socket DX-123H für G-9,5

Best.-Nr. 94600300



Socket DX-419 für GX-9,5

Best.-Nr. 94600350

