

## HTI 250 W/32

HTI | Metal halide lamps with reflector



### Areas of application

- Medical endoscopy
- Industrial boroscopy
- Light guide systems in the entertainment sector

### Product benefits

- Highly efficient lighting systems for injecting light into a light guide

### Product features

- Short-arc lamps with dichroic focusing reflector



Technical data

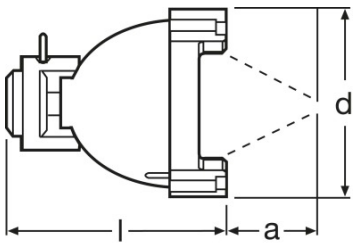
Electrical data

Nominal wattage	250 W
Nominal voltage	45 V
Nominal current	6.00 A

Light technical data

Color temperature	5600 K
Focal length	32.0 mm

Dimensions & weight



Product line drawing

Diameter	67.0 mm
Length	73.0 mm

Lifespan

Lifespan	250 h
----------	-------

Additional product data

Base (standard designation)	FaXP2.5
Footnote only for product	Also available with connecting cable and plug contact: HTI 250 W/32 C or HTI 250 W/22 C

Capabilities

Burning position	p15/s15
------------------	---------

## Product datasheet

### Certificates & standards

EEI – Energy Label	B
--------------------	---

---

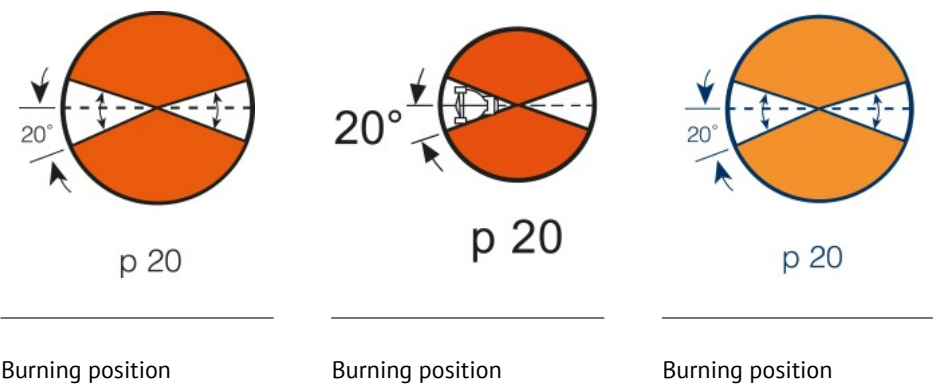
### Country specific information

---

Product code	METEL code	SEG-No.	STK-Number	UK Org
4050300226576	OSRHTI25032	-	-	-

Safety advice

Because of their high luminance, UV radiation and high internal pressure during operation, HTI lamps may only be operated in enclosed lamp casings specially constructed for the purpose. Appropriate filters must ensure that UV radiation is reduced to an acceptable level. Mercury is released if the lamp breaks. Special safety precautions must be taken. Information on safety and handling is available on request or can be found in the leaflet included with the lamp or in the operating instructions.



Logistical Data

Product code	Product description	Packaging unit (Pieces/Unit)	Dimensions (height x width x length)	Volume	Gross weight
4050300226576	HTI 250 W/32	Folding carton box 1	87 mm x 87 mm x 103 mm	0.78 dm <sup>3</sup>	144.00 g
4050300226583	HTI 250 W/32	Shipping carton box 2	100 mm x 120 mm x 186 mm	2.23 dm <sup>3</sup>	334.00 g

The mentioned product code describes the smallest quantity unit which can be ordered. One shipping unit can contain one or more single products. When placing an order, for the quantity please enter single or multiples of a shipping unit.

Disclaimer

Subject to change without notice. Errors and omission excepted. Always make sure to use the most recent release.