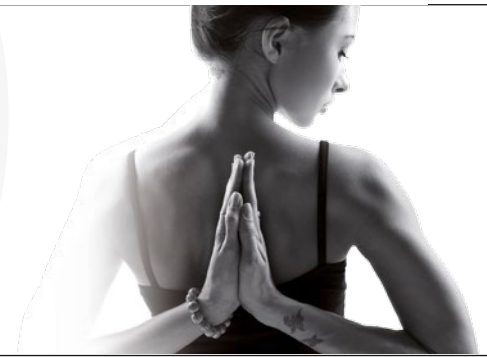


... get flexible!

LED SOFT DISPLAYS



EUROLITE LSD-E IP44

- RGB
- IP44
- RJ45
- TCL

No. 80503231.....	LSD-100E, Custom size
No. 80503233.....	LSD-75E, Custom size
No. 80503235.....	LSD-50E, Custom size
No. 80503237.....	LSD-37,5E, Custom size
No. 80503239.....	LSD-25E, Custom size
No. 80503228.....	LSD-20E, Custom size



EUROLITE LSD MK2

- RGB
- IP44
- RJ45
- TCL

No. 80503240.....	LSD-100 MK2
No. 80503244.....	LSD-75 MK2
No. 80503248.....	LSD-50 MK2
No. 80503252.....	LSD-37,5 MK2
No. 80503256.....	LSD-25 MK2
No. 80503260.....	LSD-20 MK2
No. 80503264.....	LSD-18,25 MK2

Custom sizes available on demand!



EUROLITE LSD-E

- RGB
- IP44
- RJ45
- TCL

No. 80503270.....	LSD-20E MK2
No. 80503271.....	LSD-25E MK2
No. 80503272.....	LSD-37,5E MK2
No. 80503273.....	LSD-50E MK2
No. 80503274.....	LSD-75E MK2
No. 80503275.....	LSD-100E MK2

General:

Power supply:	90 - 260 V AC, 50/60 Hz ~	Humidity:	10 to 90 %
Frame rate:	60 Hz	Pixel configuration:	tricolor RGB LEDs, type SMD 5050 (MKII) tricolor RGB LEDs, type SMD 3528 (E-Version)
Data refresh rate:	600 Hz	Lifetime:	approx. 100000 hours
Colors:	16.7 million (R 256, G 256, B 256)	Display port:	DVI/RJ45
Protection rating:	IP 44	Display mode:	synchronous to video source
Operating temperature:	-10 to 45 °C		

EUROLITE LSD signal extension wire 1.5m

No. 80503295



EUROLITE LSD power link cable 1.5m

No. 80503296



Model:	LSD-100 MK2	LSD-100E/E MK2	LSD-75 MK2	LSD-75E/E MK2	LSD-50 MK2	LSD-50E/E MK2
Power supply:	5 W/m ²	2,5 W/m ²	12 W/m ²	4 W/m ²	12 W/m ²	10 W/m ²
Screen resolution:	16 x 16 pixels	16 x 16 pixels	16 x 32 pixels	16 x 32 pixels	32 x 48 pixels	32 x 48 pixels
Pixel pitch:	100 mm	100 mm	75 mm	75 mm	50 mm	50 mm
Pixel density:	100/m ²	100/m ²	177/m ²	177/m ²	400/m ²	400/m ²
Drive mode:	1/8 scan	1/8 scan	1/8 scan	1/8 scan	1/8 scan	1/8 scan
Viewing angle:	110°	120°	110°	120°	110°	120°
Brightness:	185 cd/m ² (nits)	40 cd/m ² (nits)	286 cd/m ² (nits)	75 cd/m ² (nits)	520 cd/m ² (nits)	150 cd/m ² (nits)
Connectors:	push buttons/h&l	push buttons/h&l	push buttons/h&l	push buttons/h&l	push buttons/h&l	push buttons/h&l
Dimensions (WxH):	1600 x 1600 mm	1600 x 1600 mm	1200 x 2400 mm	1200 x 2400 mm	1600 x 2400 mm	1600 x 2400 mm
Weight:	1,8 kg/m ²	1,8 kg/m ²	2,2 kg/m ²	2,2 kg/m ²	2,9 kg/m ²	2,5 kg/m ²

Model:	LSD-37,5 MK2	LSD-37,5E/E MK2	LSD-25 MK2	LSD-25E/E MK2	LSD-20 MK2	LSD-20E/E MK2	LSD-18,25 MK2
Power supply:	20 W/m ²	16 W/m ²	45 W/m ²	40 W/m ²	68 W/m ²	60 W/m ²	78 W/m ²
Screen resolution:	32 x 64 pixels	32 x 48 pixels	48 x 64 pixels	48 x 64 pixels	64 x 128 pixels	64 x 128 pixels	64 x 64 pixels
Pixel pitch:	37,5 mm	37,5 mm	25 mm	25 mm	20 mm	20 mm	18,25 mm
Pixel density:	711/m ²	711/m ²	1600/m ²	1600/m ²	2500/m ²	2500/m ²	3002/m ²
Drive mode:	1/8 scan	1/8 scan	1/8 scan	1/8 scan	1/8 scan	1/8 scan	1/8 scan
Viewing angle:	110°	120°	110°	120°	110°	120°	110°
Brightness:	1270 cd/m ² (nits)	260 cd/m ² (nits)	2330 cd/m ² (nits)	585 cd/m ² (nits)	3600 cd/m ² (nits)	940 cd/m ² (nits)	3680 cd/m ² (nits)
Connectors:	push buttons/h&l	push buttons/h&l	angled	angled	angled	angled	angled
Dimensions (WxH):	1200 x 2400 mm	1200 x 2400 mm	1200 x 1600 mm	1200 x 1600 mm	1280 x 2560 mm	1280 x 2560 mm	1170 x 1170 mm
Weight:	3,2 kg/m ²	4 kg/m ²	5,8 kg/m ²	6,5 kg/m ²	7,8 kg/m ²	7,8 kg/m ²	9 kg/m ²