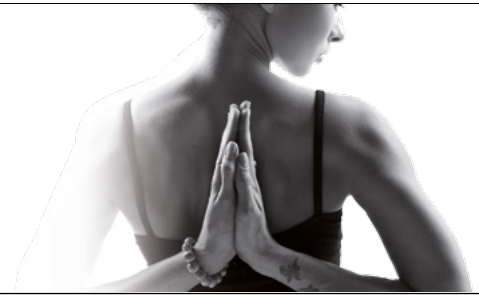


... get flexible!

LED SOFT DISPLAYS



LSD Eco MK2

- RGB
- IP44
- RJ45
- TCL

No. 80503270 LSD-20E MK2
No. 80503271 LSD-25E MK2
No. 80503272 LSD-37,5E MK2
No. 80503273 LSD-50E MK2
No. 80503274 LSD-75E MK2
No. 80503275 LSD-100E MK2

LSD MK2

- RGB
- IP44
- RJ45
- TCL

No. 80503240 LSD-100 MK2
No. 80503244 LSD-75 MK2
No. 80503248 LSD-50 MK2
No. 80503252 LSD-37,5 MK2
No. 80503256 LSD-25 MK2
No. 80503260 LSD-20 MK2
No. 80503264 LSD-18,25 MK2

Custom sizes available on demand!

No. 80503301

EUROLITE LSD AIO Network control system MK2

Mobile network control system for LSD displays

No. 80503311

EUROLITE LSD Receiving card MK2

Receiving interface of network control system LED Studio

EUROLITE LSD signal extension wire

No. 80503294 1 m
No. 80503295 1.5 m



EUROLITE LSD power link cable 1.5m

No. 80503296



General:

Power supply:	90 - 260 V AC, 50/60 Hz ~	Humidity:	10 to 90 %
Frame rate:	60 Hz	Pixel configuration:	tricolor RGB LEDs, type SMD 5050 (MKII)
Data refresh rate:	600 Hz		tricolor RGB LEDs, type SMD 3528 (E-Version)
Colors:	16.7 million (R 256, G 256, B 256)	Lifetime:	approx. 100000 hours
Protection rating:	IP 44	Display port:	DVI/RJ45
Operating temperature:	-10 to 45 °C	Display mode:	synchronous to video source

Model:	LSD-100 MK2	LSD-100E/E MK2	LSD-75 MK2	LSD-75E/E MK2	LSD-50 MK2	LSD-50E/E MK2
Power supply:	5 W/m ²	2,5 W/m ²	12 W/m ²	4 W/m ²	12 W/m ²	10 W/m ²
Screen resolution:	16 x 16 pixels	16 x 16 pixels	16 x 32 pixels	16 x 32 pixels	32 x 48 pixels	32 x 48 pixels
Pixel pitch:	100 mm	100 mm	75 mm	75 mm	50 mm	50 mm
Pixel density:	100/m ²	100/m ²	177/m ²	177/m ²	400/m ²	400/m ²
Drive mode:	1/8 scan	1/8 scan	1/8 scan	1/8 scan	1/8 scan	1/8 scan
Viewing angle:	110°	120°	110°	120°	110°	120°
Brightness:	185 cd/m ² (nits)	40 cd/m ² (nits)	286 cd/m ² (nits)	75 cd/m ² (nits)	520 cd/m ² (nits)	150 cd/m ² (nits)
Connectors:	push buttons/h&l	push buttons/h&l	push buttons/h&l	push buttons/h&l	push buttons/h&l	push buttons/h&l
Dimensions (WxH):	1600 x 1600 mm	1600 x 1600 mm	1200 x 2400 mm	1200 x 2400 mm	1600 x 2400 mm	1600 x 2400 mm
Weight:	1,8 kg/m ²	1,8 kg/m ²	2,2 kg/m ²	2,2 kg/m ²	2,9 kg/m ²	2,5 kg/m ²

Model:	LSD-37,5 MK2	LSD-37,5E/E MK2	LSD-25 MK2	LSD-25E	LSD-20 MK2	LSD-20E/E MK2	LSD-18,25 MK2
Power supply:	20 W/m ²	16 W/m ²	45 W/m ²	40 W/m ²	68 W/m ²	60 W/m ²	78 W/m ²
Screen resolution:	32 x 64 pixels	32 x 48 pixels	48 x 64 pixels	48 x 64 pixels	64 x 128 pixels	64 x 128 pixels	64 x 64 pixels
Pixel pitch:	37,5 mm	37,5 mm	25 mm	25 mm	20 mm	20 mm	18,25 mm
Pixel density:	711/m ²	711/m ²	1600/m ²	1600/m ²	2500/m ²	2500/m ²	3002/m ²
Drive mode:	1/8 scan	1/8 scan	1/8 scan	1/8 scan	1/8 scan	1/8 scan	1/8 scan
Viewing angle:	110°	120°	110°	120°	110°	120°	110°
Brightness:	1270 cd/m ² (nits)	260 cd/m ² (nits)	2330 cd/m ² (nits)	585 cd/m ² (nits)	3600 cd/m ² (nits)	940 cd/m ² (nits)	3680 cd/m ² (nits)
Connectors:	push buttons/h&l	push buttons/h&l	angled	angled	angled	angled	angled
Dimensions (WxH):	1200 x 2400 mm	1200 x 2400 mm	1200 x 1600 mm	1200 x 1600 mm	1280 x 2560 mm	1280 x 2560 mm	1170 x 1170 mm
Weight:	3,2 kg/m ²	4 kg/m ²	5,8 kg/m ²	6,5 kg/m ²	7,8 kg/m ²	7,8 kg/m ²	9 kg/m ²