



ALUTRUSS Truss transport board combo incl 3 wheels

Practical transport cart with castors for QUADLOCK and TRILOCK truss elements

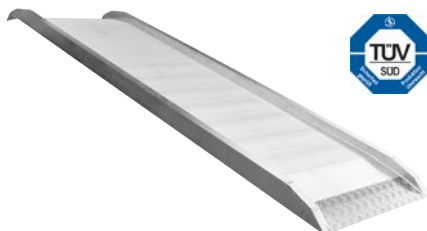
- Suitable for 2 QUADLOCK and TRILOCK truss elements with 290 mm
- Made in the EU



Technical specifications:

Recommended maximum load:	6 truss elements vertical (height approx. 2.1 m)
Dimensions (LxWxH):	600 x 300 x 47 mm
Weight:	3.2 kg

No. 60320307 combo
 No. 60320309 trio



ALUTRUSS Truckramp 2m/80cm

Practical flightcase ramp

- Rugged aluminium ramp for loading and unloading the stage equipment
- One ramp in different widths (80 or 100 cm)
- Available in different lengths (2, 3, 4 or 5 Meter)
- Not comparable with DIY ramps



No. 60320500 2 m/80 cm
 No. 60320501 3 m/80 cm
 No. 60320502 4 m/80 cm
 No. 60320504 2 m/100 cm
 No. 60320505 3 m/100 cm
 No. 60320506 4 m/100 cm
 No. 60320507 5 m/100 cm