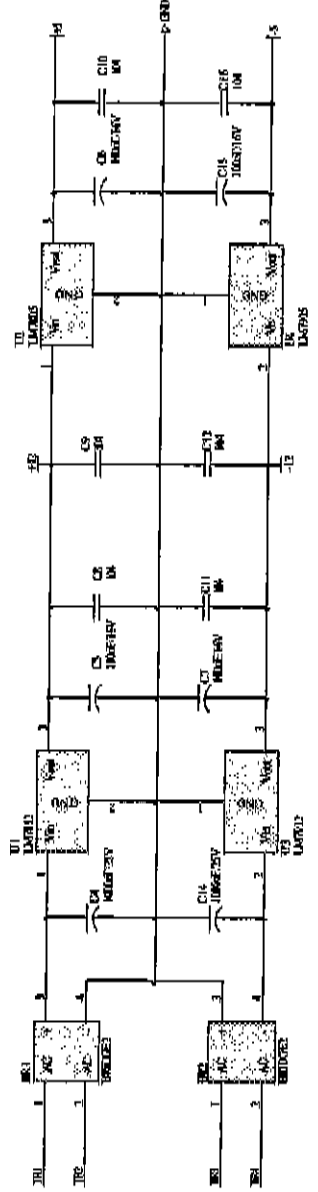
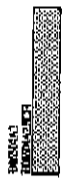
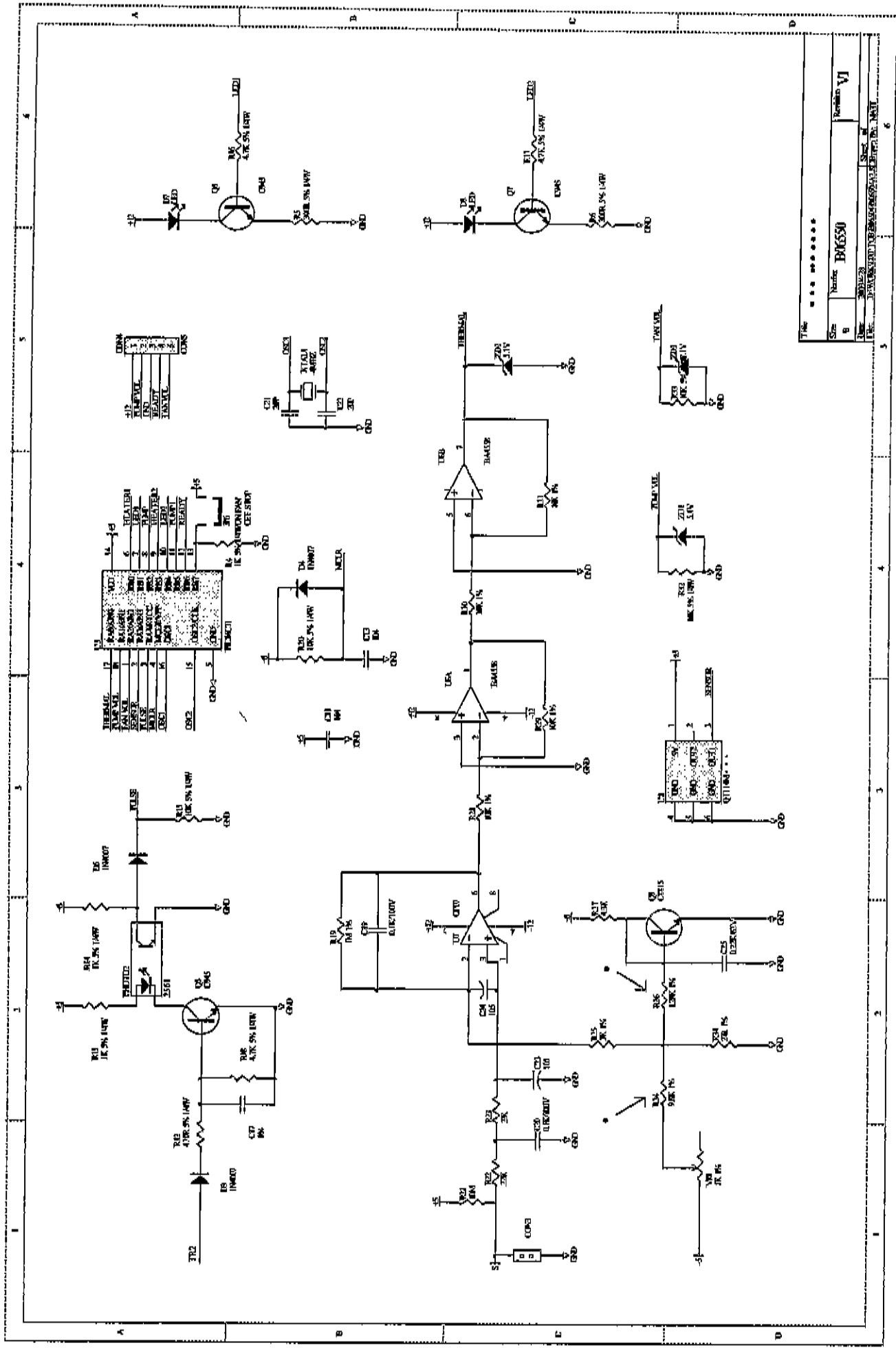
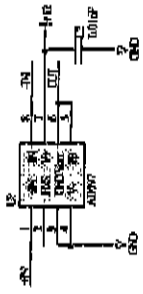
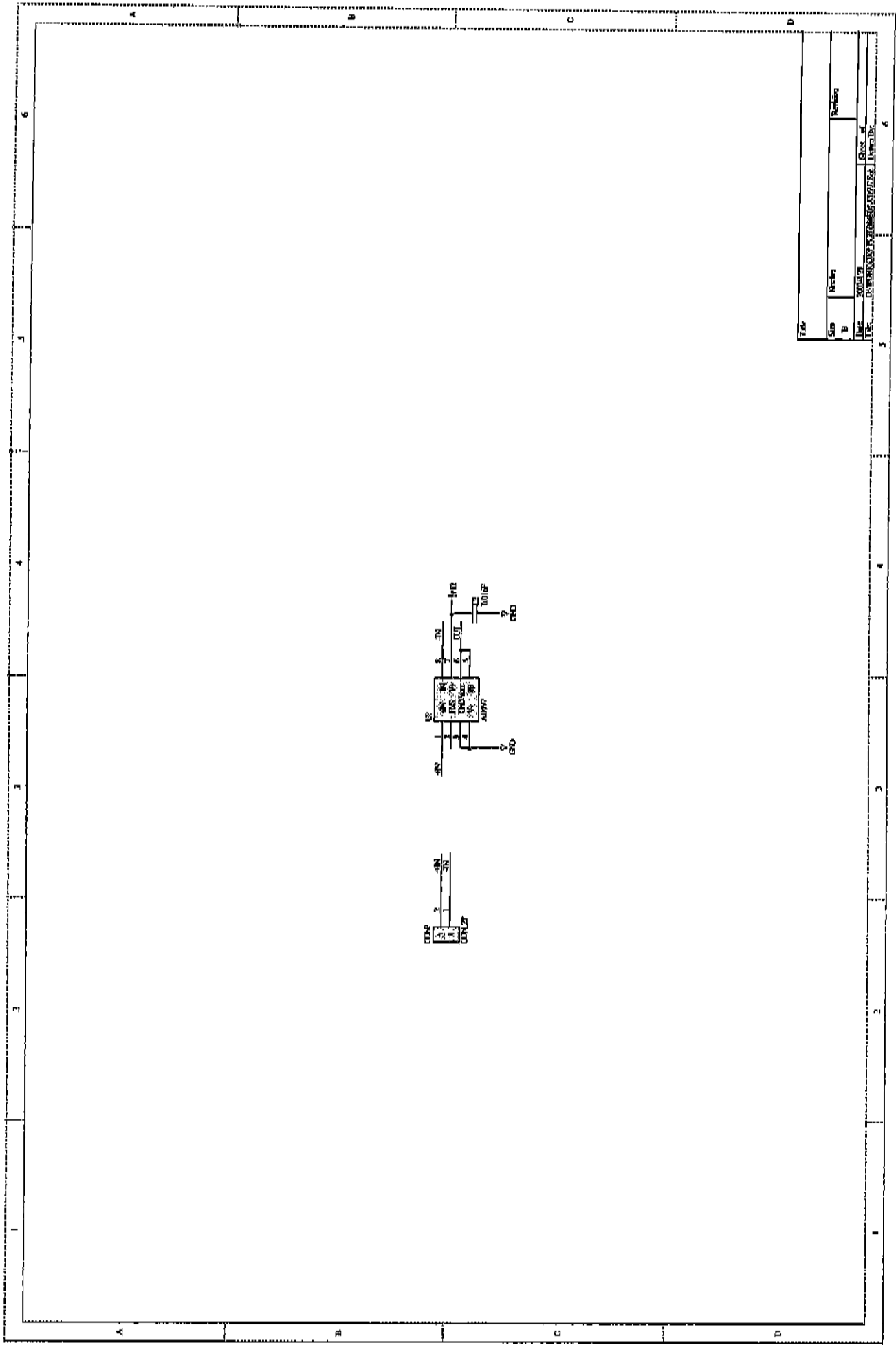


Title		*****	
Size	Number	B06580	
Rev	Rev	Rev	
Doc	Doc	Doc	
Proj	Proj	Proj	

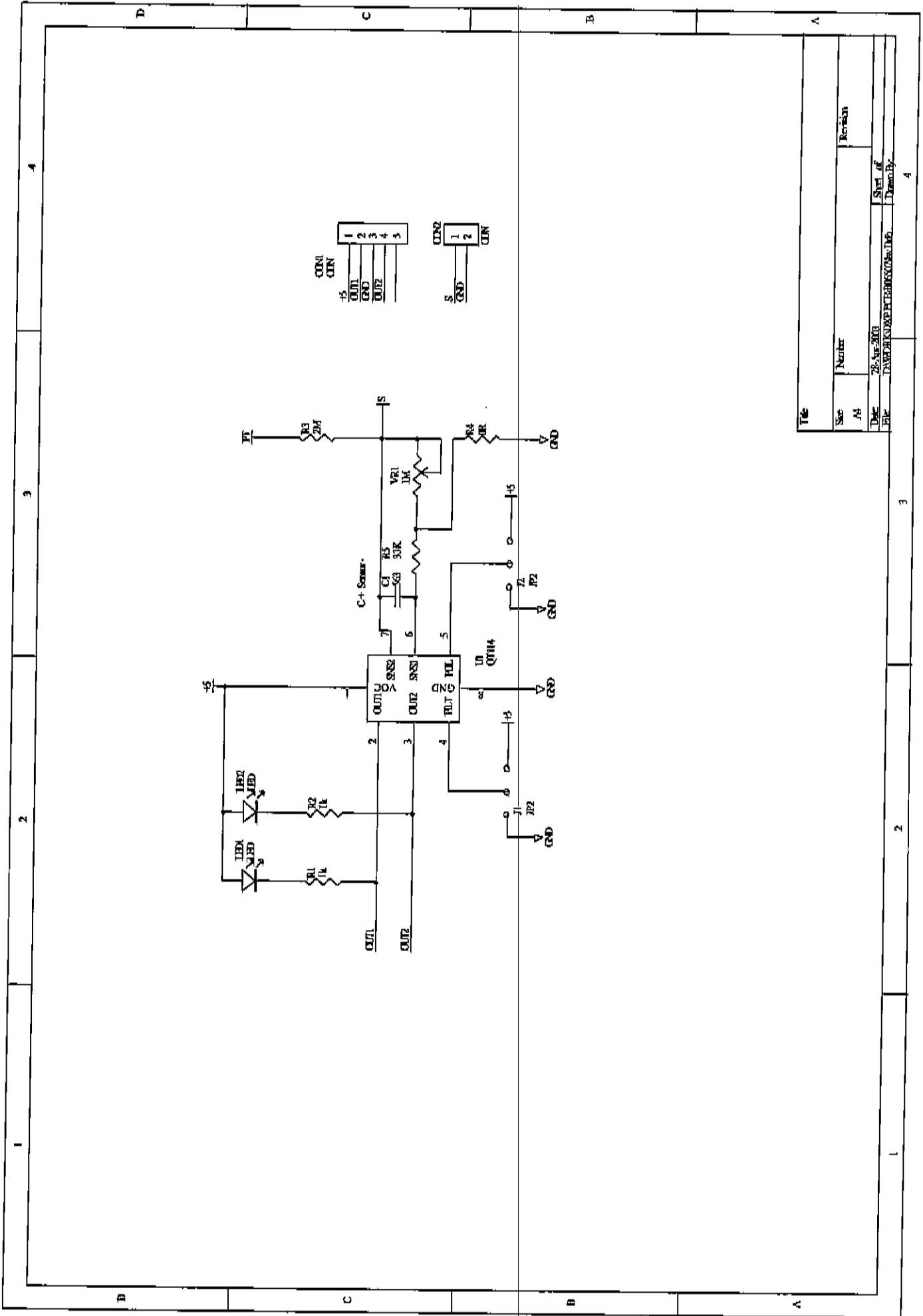




Title .....	
Rev	Revisi
B	VI
Rev	Revisi
1	1
Date .....	
Desain .....	
Dibuat .....	
No. ....	



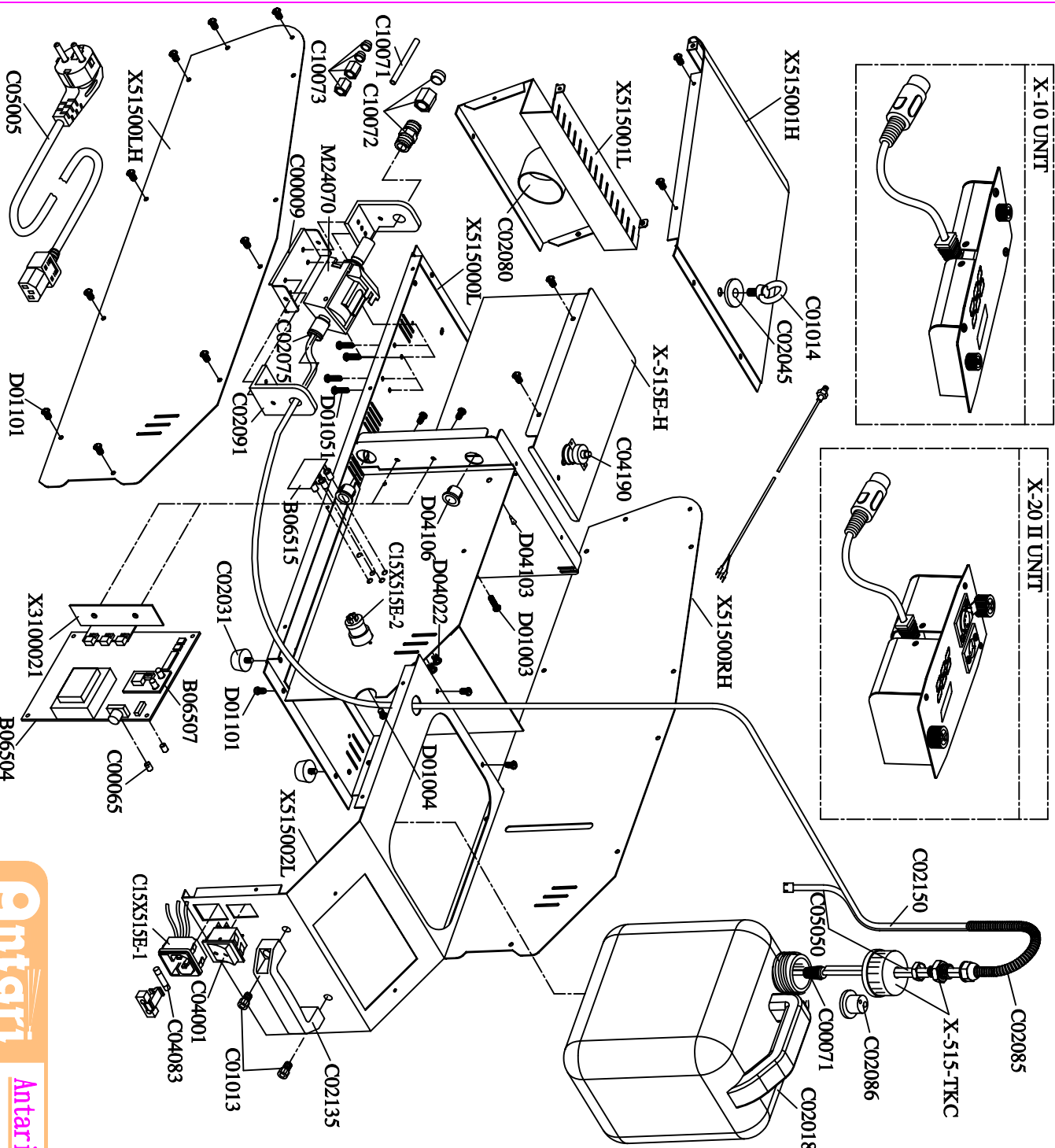
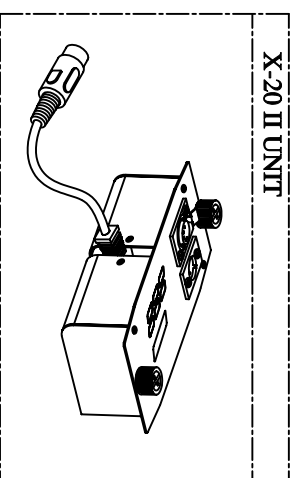
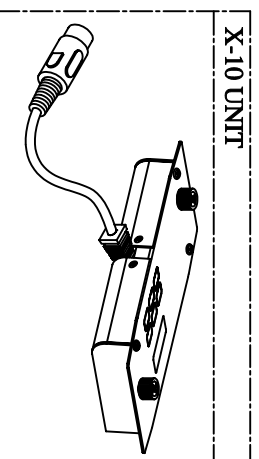
File			
Size	Number	Revision	
1	2	3	4
Name			Sheet #
ELECTRONIC CIRCUITRY			6



Title		Revision	
Size	Number		
A4			
Date	26-Nov-2003	Sheet of	4
Title	DAVIDSON ELECTRONICS INC.	Priority	

1 2 3 4

1 2 3 4



**SPARE PARTS OF X-515 (230V)**

- X51500LH Side Panel/Left
- X51500RH Side Panel/Right
- X515001H Steel Case/Front Cover
- X515000L Steel Case/Front Cover
- X515001L Steel Case/Front Base
- X515002L Steel Case/Back Base
- X3100021 Aluminum Plate
- B06504 P.C Board(Main)
- B06507 P.C Board(Low Fluid Sensor)
- B06515 P.C Board(LED Indicator)
- C00009 Pump Plate
- C00065 P.C.B Fastening Screw Collar
- C00071 Filter(6L)
- C01013 M8x12L Screw
- C01014 M8 Screw
- C02018 Tank's Cap(6L)
- C02031 Foot
- C02045 Washer
- C02075 Adaptor With Nut
- C02080 Plastic Nozzle
- X-515-TKC Plastic Corrugated Pipes Fittings
- C02085 Plastic Corrugated Pipes
- C02086 Hole Plugs
- C02091 Pump Plastic Plate
- C02135 Handle
- C02150 Pu Tube (ø6L=900mm)
- C04001 Rocket Switch / Power
- C04083 Fuse (F7A250V/230V)
- C04190 Reset Type Thermo-Switch
- C05005 Cable & Plug
- C05050 Filter Sensor
- C10071 Tube
- C10072 Adaptor
- C10073 Adaptor
- C15X515E-1 Power Inlet Socket & Fuseholder
- C15X515E-2 Control Inlet Socket 5Pin
- D01003 M4x12L Screw
- D01004 M3x8L Screw
- D01051 M4x15L Screw
- D01101 M4x8L Screw
- D04022 Ring Bushing
- D04103 P.C.B Fastening Pin
- D04106 Plastic Collars
- M24070 Pump
- X-10 UNIT Remote Control
- X-20 II UNIT DMX Control
- X-515E-H Heater Group

**Antari**  
FOG MACHINE

**Antari Lighting And Effects Ltd.**