

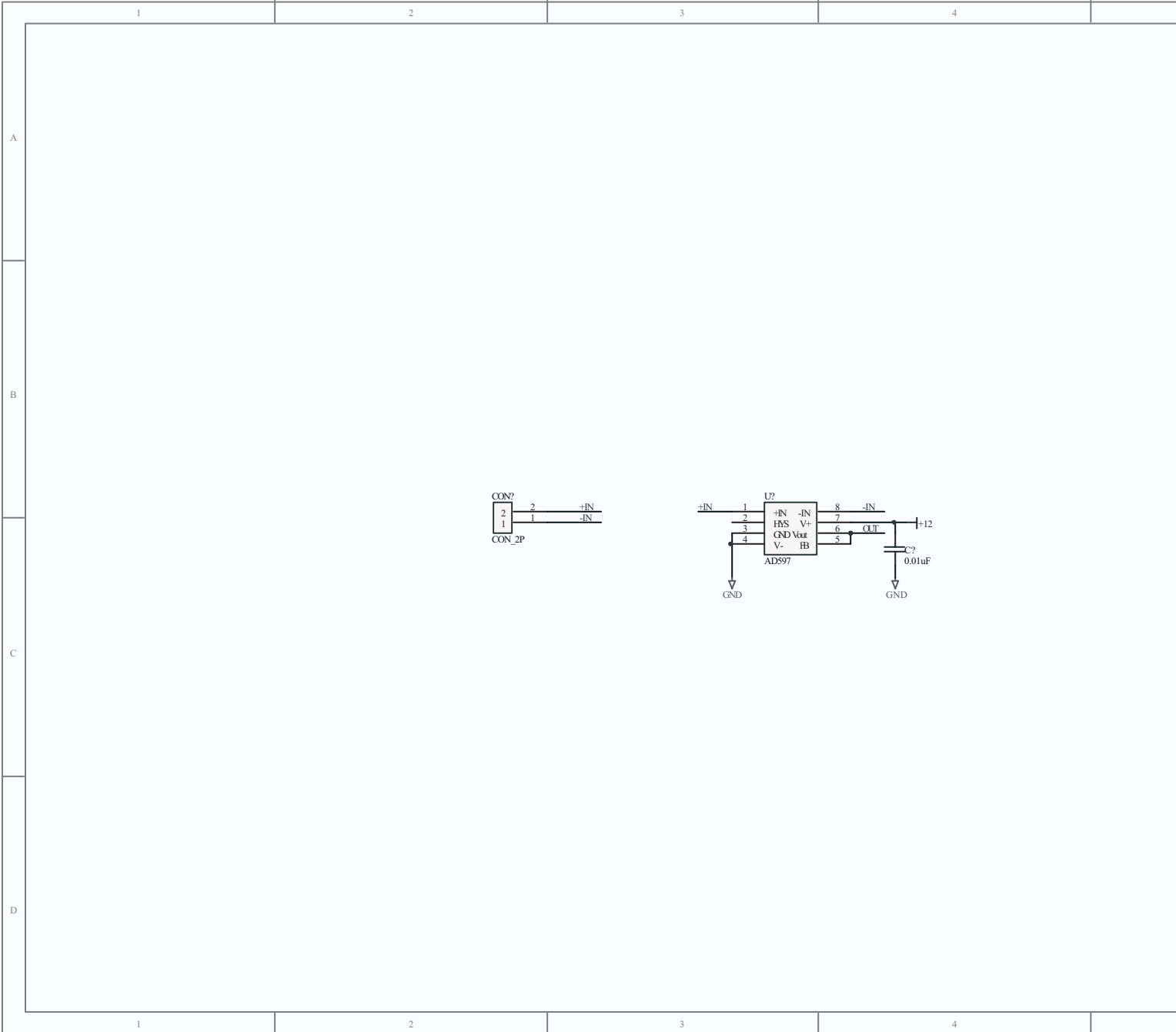


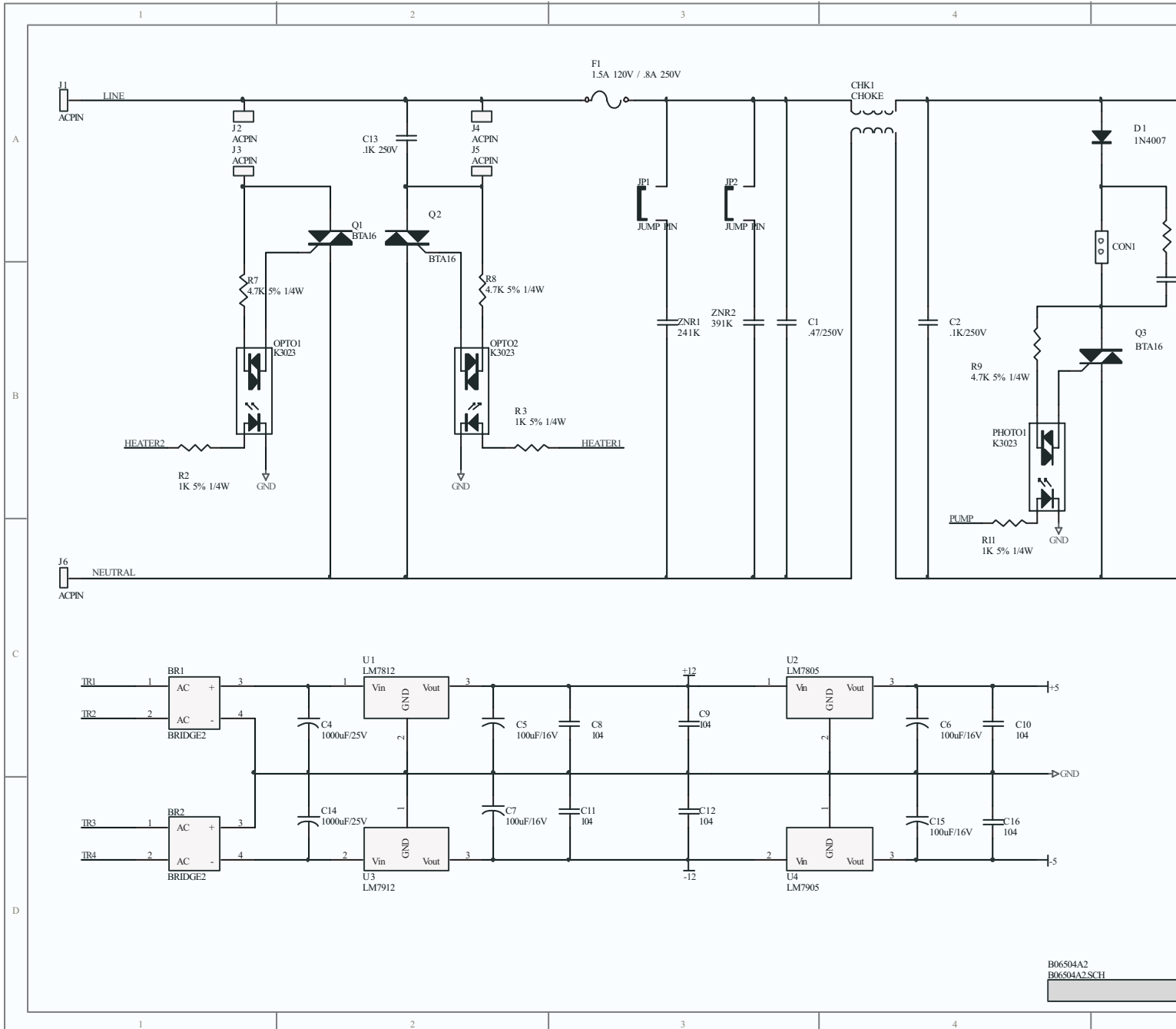
X-310

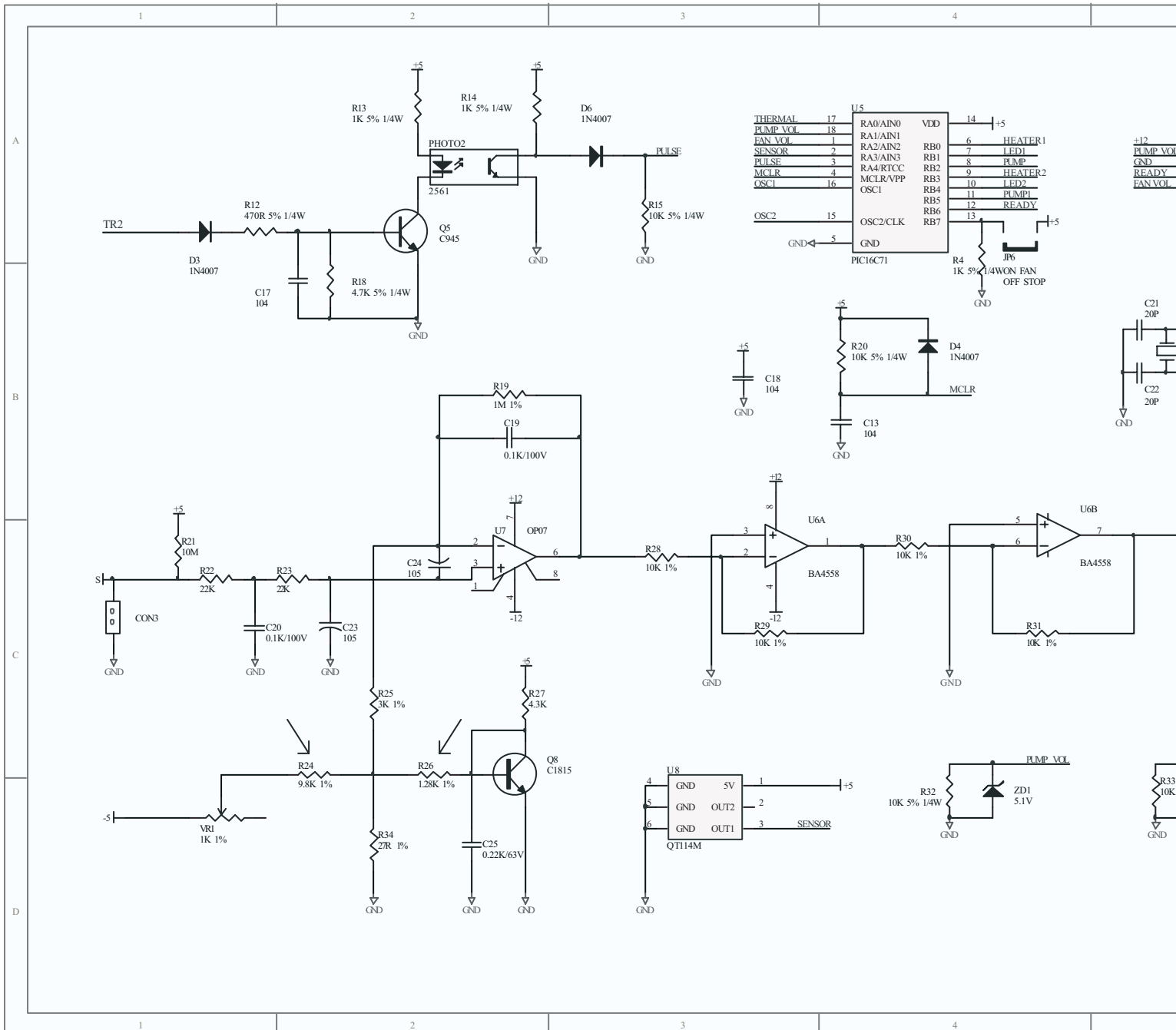
Fog machine

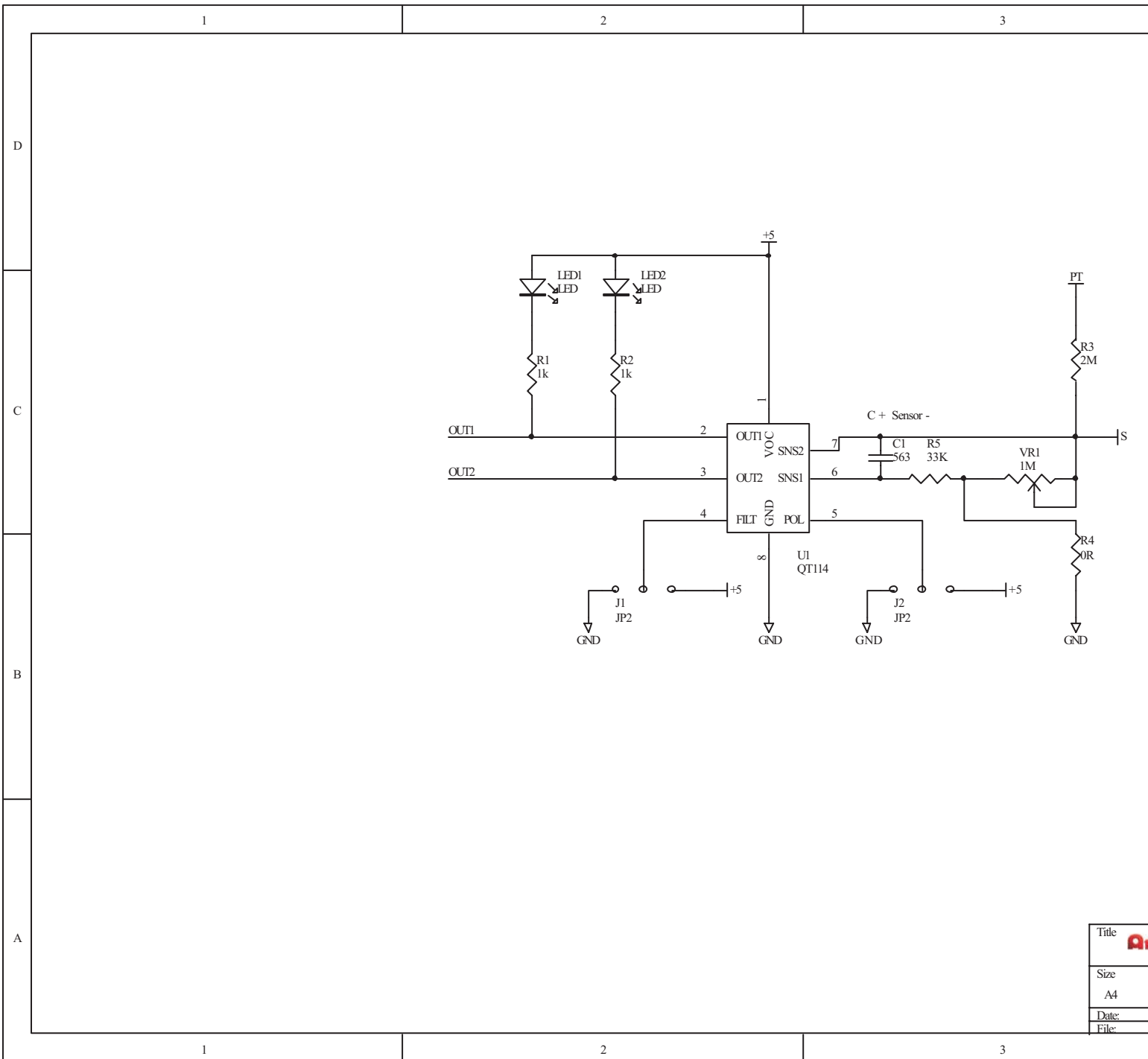
Service-Dokumente
Service-documents
Documents de service
Documentos de servicio

Version 1.1

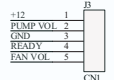
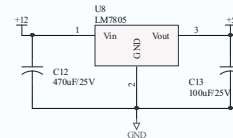
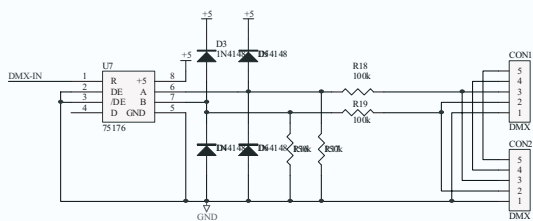
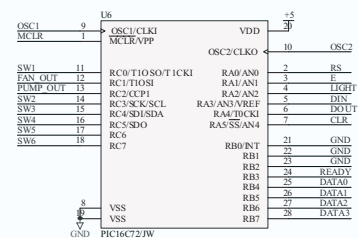
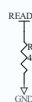
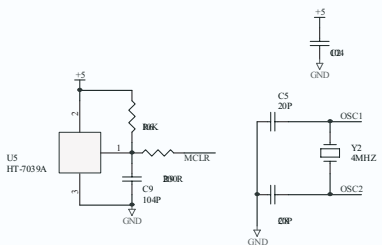
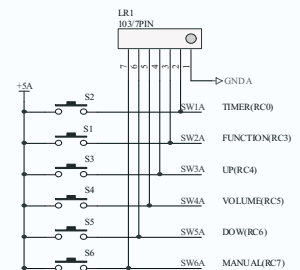
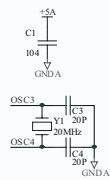
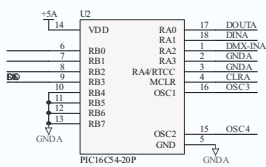
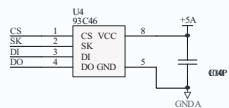


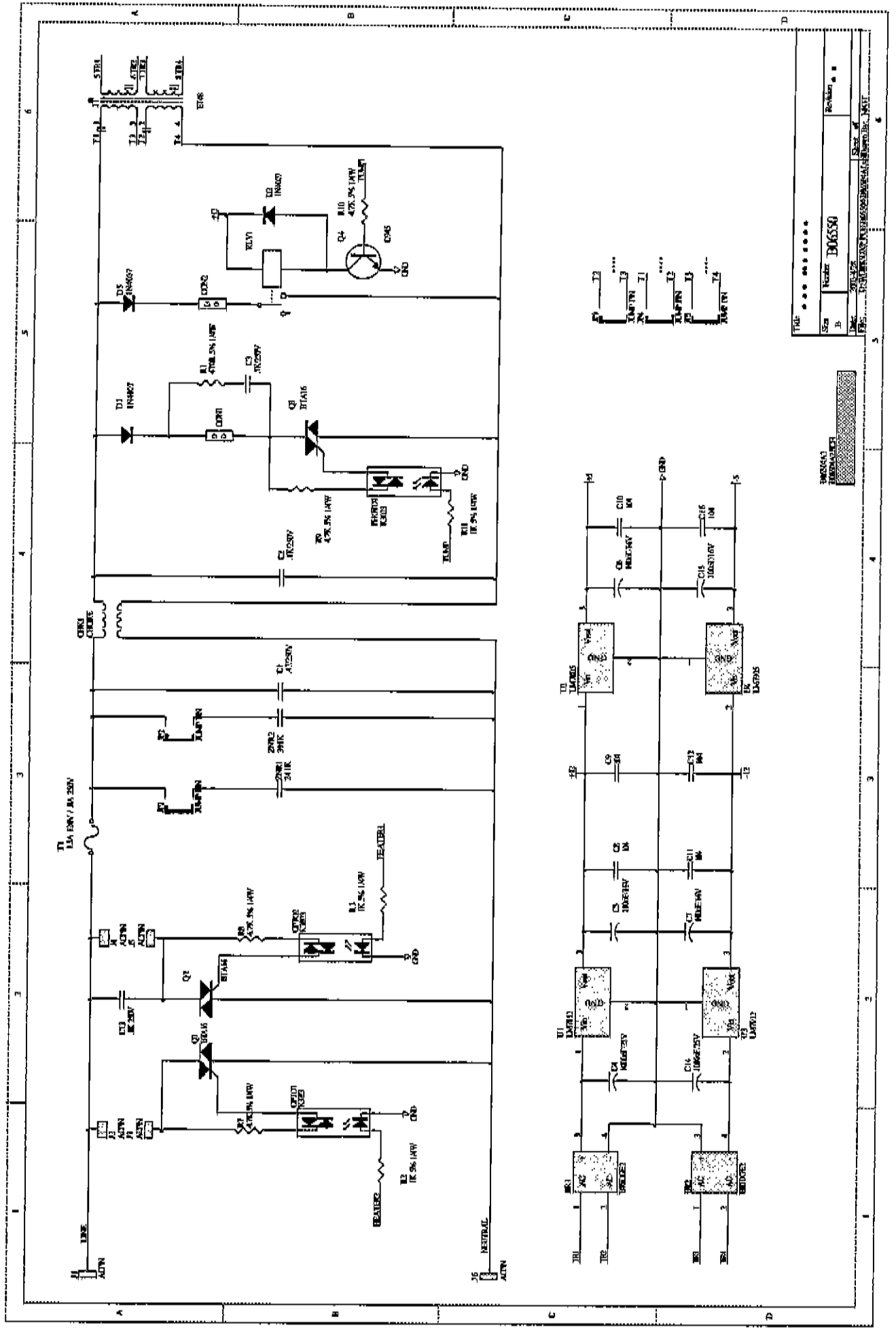






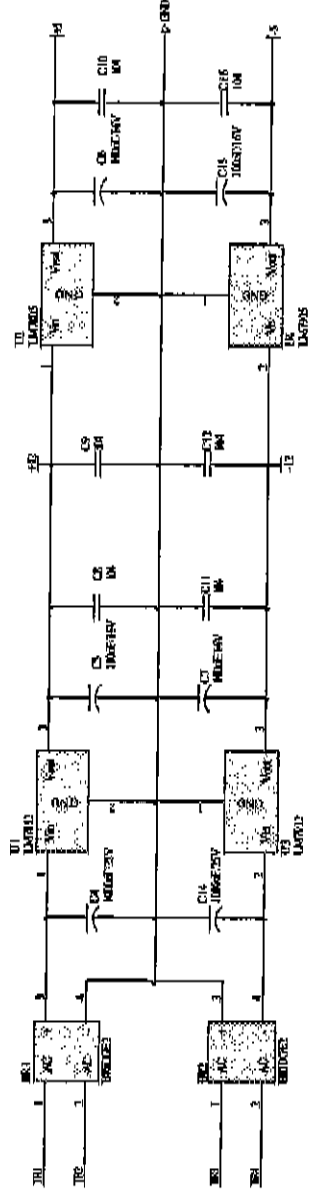
Title	
Size	A4
Date:	
File:	

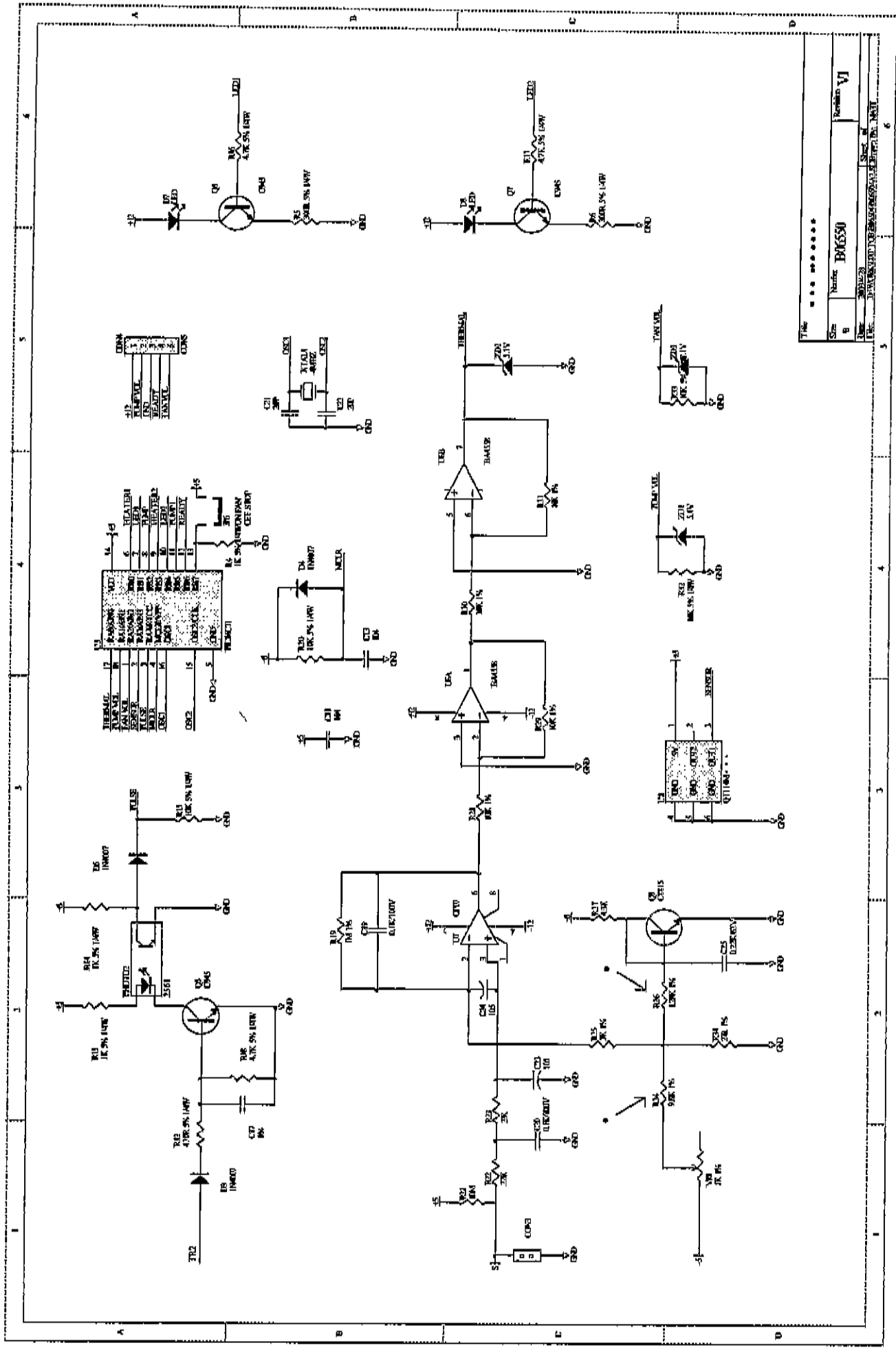




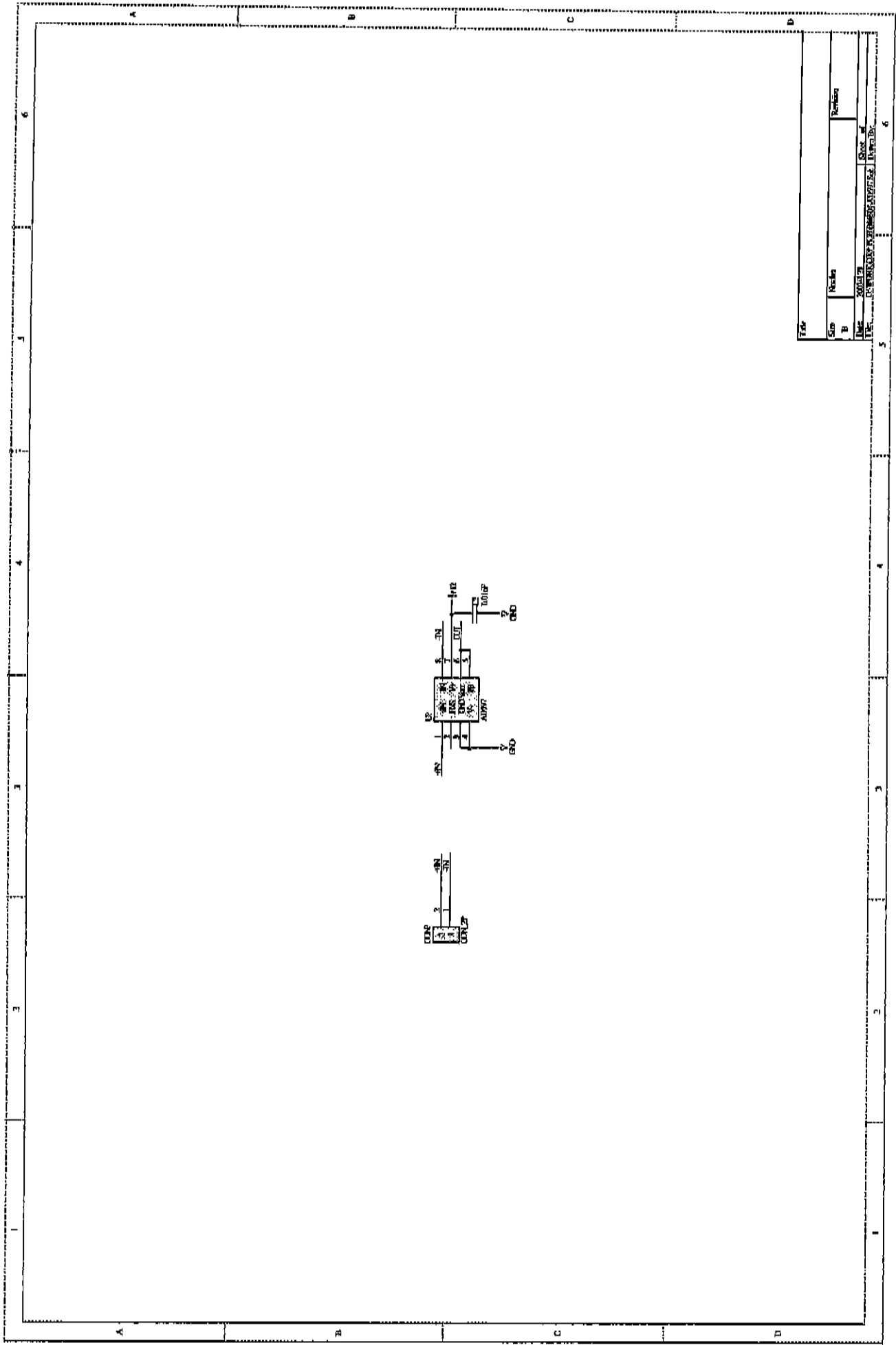
Title		*****	
Size	Number	B06580	
Rev	Sheet of	1 of 1	
Date		10/15/52	
By		J. H. HARRIS	
Check		J. H. HARRIS	
Appr		J. H. HARRIS	
Rev		Revision	

REVERSE MOTOR

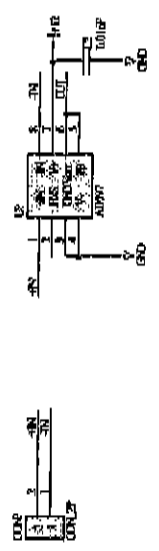


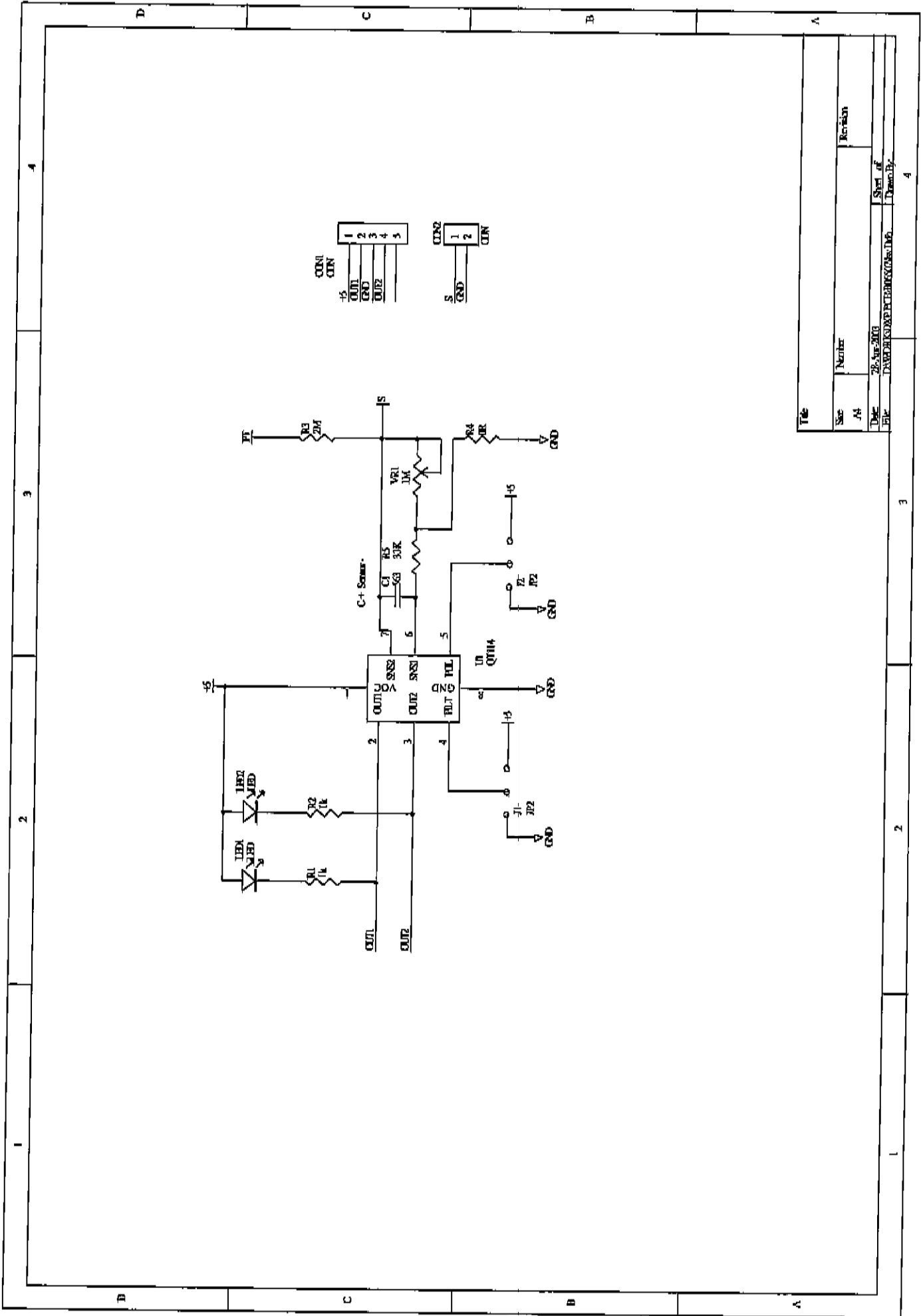


Title	
Sheet No.	Revision VI
Drawn By	
Checked By	
Approved By	



Title		Revision	
Size	Model		
Date		Sheet #	
1.1.1		6	





Title		Revision	
Size	Number		
A4			
Date	26-Mar-2003	Sheet of	4
File	D:\WORK\BENCH\BENCH.DWG	Drawn by	

1

2

3

4

1

2

3

4

SPARE PARTS OF X-310 (230V)

- X3100001 Side Panel/Left
- X3100002 Side Panel/Right
- X3100003 Steel Case/Front Base
- X3100004 Steel Case/Front Cover
- X3100005 Handle/Front
- X3100006 Fan Base
- X3100007 Steel Case/Back Base
- X3100008 Steel Case/Back Cover
- X3100009 Tank Case
- X3100010 Blender
- X3100012 Vent
- X3100021 Aluminum Plate
- X3100022 Pump Plate
- B06504 P.C Board (not include IC)
- B06507 P.C Board
- B06515 P.C Board
- C00065 P.C.B Resinencg Screw Collar
- C00071 Filter(6L)
- C01013 M8x1/2L Screw
- C01015 M3x10L Screw
- C02024 Tank's cap(2.5L)
- C02031 Foot
- C02047 Gasket
- C02084 Plastic Corrugated Pipe Fittings
- C02085 Plastic Corrugated Pipe
- C02091 Pump Plastic Plate
- C02135 Handle
- C02151 Pa Tube (#6)
- C04001 Rocker Switch/Power
- C04034E Pin
- C04052 Guardrail
- C04056 Temperature Fuse
- C04082 Fuse(FSA230V/230V)
- C04190 Reset Type Thermo-Switch
- C05005 Cable & Plug
- C15230E-1 Power Inlet Socket & Washdrier
- C15230E-2 Control Inlet Socket 5Pin
- D01003 M4x1/2L Screw
- D01004 M3x8L Screw
- D01017-3 Guardrail Pin
- D01017-5 Guardrail Pin
- D01101 M4x8L Screw
- D02151 Pa Tube (#6)
- D04022 Ring Bushing
- D04103 P.C.B Resinencg Pin
- FEA-68 Adapter for fan to form tube connection
- MZ4070 Pump
- Remote Control
- X-30 UNIT
- DMX Control
- X-310E-H Heater Group

