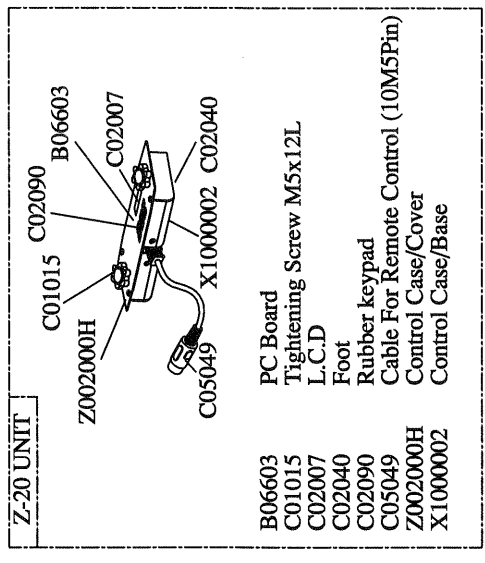
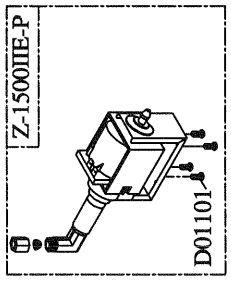
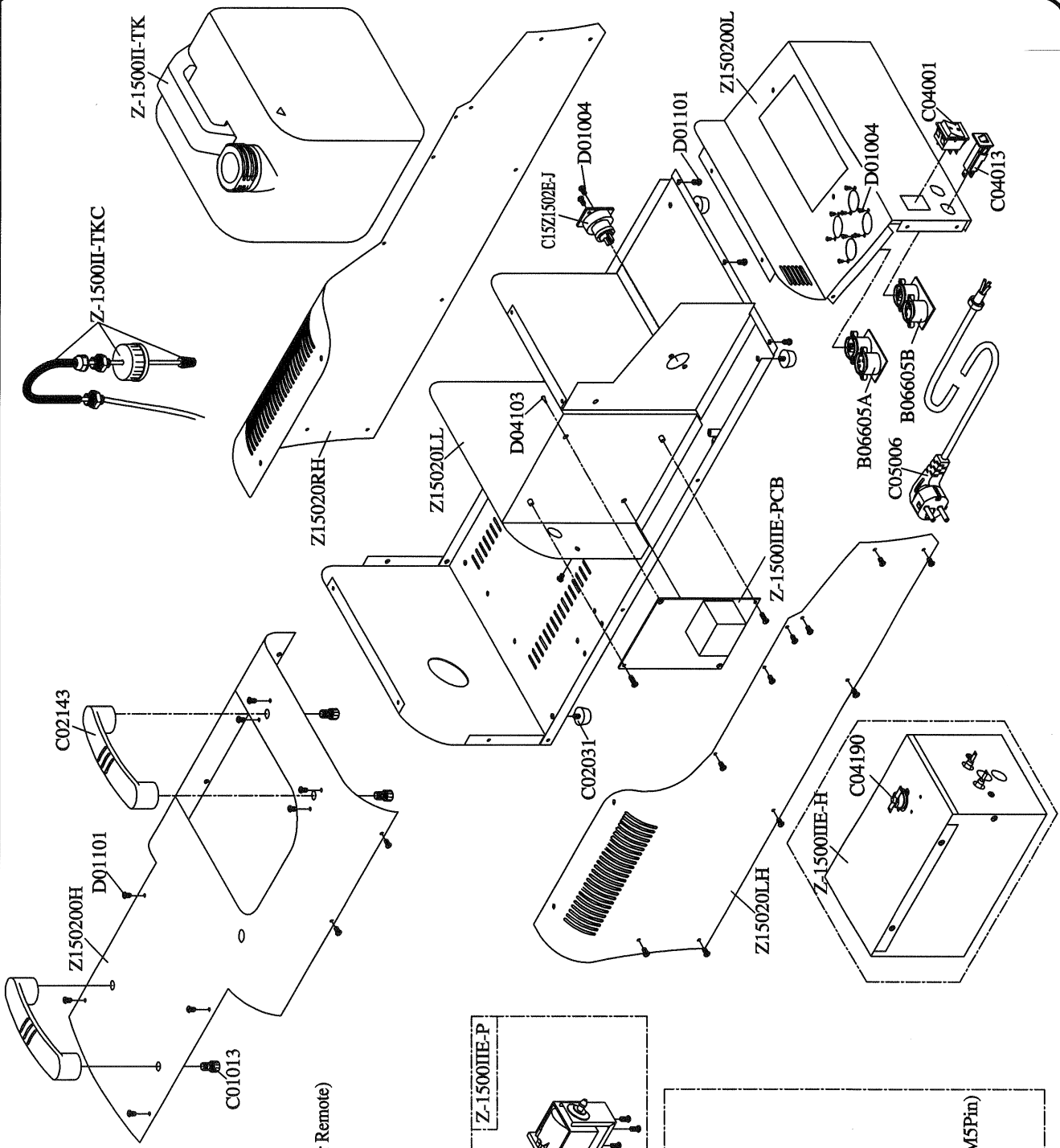


1 2 3 4 5 6 7 8

SPARE PARTS OF Z-1500II (230V)

- Z15020LL Steel Case/Base
- Z150200H Steel Case/Cover
- Z15020LH Side Panel/Left
- Z15020RH Side Panel/Right
- Z150200L Steel Case/Base
- B06605A P.C Board (DMX 3Pin)
- B06605B P.C Board (DMX 5Pin)
- C01013 M8x12L Screw
- C02031 Foot
- C02143 Handle
- C04001 Rocker Switch/Power Breaker (230V/7A)
- C04013 Manual Resettable Thermo-fuse
- C04190 Cable & Plug
- C05006 Control Outlet Socket (5Pin XLR for Remote)
- C15Z1502E-J D01004 M3x8L Screw
- D01101 D01101 M4x8L Screw
- D04103 P.C.B Fastening Pin
- Z-1500IE-H Heater (Group)
- Z-1500IE-P Pump
- Z-1500IE-PCB P.C Board (Main)
- Z-1500IE-TK Tank
- Z-1500I-TKC Tank's cap (Group)
- Z-1500IE-P Pump(Group)



- B06603 PC Board
- C01015 Tightening Screw M5x12L
- C02007 L.C.D
- C02040 Foot
- C02090 Rubber keypad
- C05049 Cable For Remote Control (10M5Pin)
- Z002000H Control Case/Cover
- X1000002 Control Case/Base

Z-Series II Spare Parts Price List

Z-1500II	220V-230V	
Z15020LL		Steel Case/Base
Z150200H		Steel Case/Cover
Z15020LH		Side Panel/ Left
Z15020RH		Side Panel/Right
Z150200L		Steel Case/Base
B06605A		P.C.Board (DMX 3 Pin)
B06605B		P.C. Board (DMX 5 Pin)
C00009		Pump Plate
C01013		M8x12L Screw
C02031		Foot
C02143		Handle
C04001		Rocker Switch/Power
C04014	C04013	Breaker
C04190		Manual Resetable Thermo-Fuse
C05001	C05004	Cable & Plug
C15Z1502-J	C15Z1502E-J	Control Outlet Socket (5 Pin XLR for Remote)
D01004		M3x8L Screw
D01051		M4x15L Screw
D01101		M4x8L Screw
D04103		P.C.B. Fastening Pin
Z-1500II-H	Z-1500II-E-H	Heater
Z-1500II-P	Z-1500II-E-P	Pump
Z-1500II-PCB	Z-1500II-E-PCB	P.C. Board
Z-1500II-TKC		Tank's Cap
Z-1500II-TK		Tank