

DarkFX Drive 4

Features

- Compact and robust design
- 4 output terminals for DarkFX UV fixtures
- Neutrik powercon in/thru
- 2 x 16 digit LCD display interface
- DMX control option



Specification

Input voltage	AC100-240V 50-60Hz
Power consumption	56W @ 110VAC 65W @ 220VAC
Refresh rate	500Hz
Output current each channel	Constant 500mA Max.
Control option	DMX 512, Manual
DMX channels	1, 2
Operation	2 x 16 digit display with 4 buttons
Fixture output	4 terminal block
Power connection	Neutrik Powercon in/through
DMX data connection	5-pin XLR
Housing	Metal
Protection rating	IP-20 Indoor use only
Dimension	L 216 x W 135 x H 70 mm
Dry weight	1.62 kg

DarkFX Spot 510 IP

Features

- High efficiency UV LED
- Peak wavelength at 365nm
- Minimum visible light
- High output 4500mW at full intensity
- Special optics will not degrade by high UV exposure
- Flicker free
- Weather proof IP-65



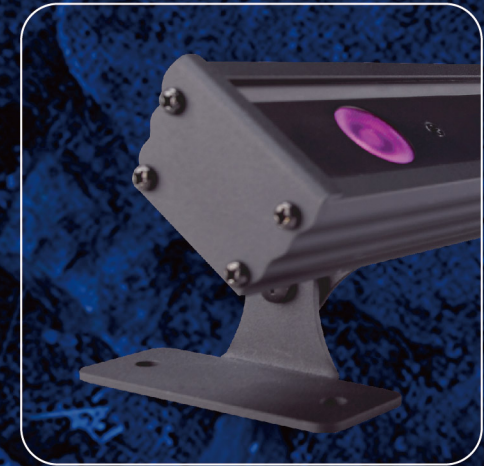
Specification

Input voltage	DC 20-24V
Power consumption	12W
LED	6 x 3W High Power UV LED
Optics	15 degrees
Radiant flux output	4500mW
Project lamp life	20,000 hours L70 at 25C
Peak wavelength	365nm
Cable connection	22 AWG wire cable
Housing	Aluminum Die Casting
Protection rating	IP-65
Dimension	W 110.5 x D 49.8 x H 134.25 mm
Dry weight	0.71 kg

DarkFX Strip 510

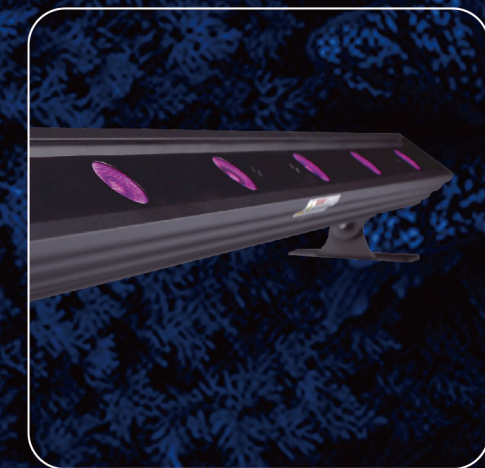
Features

- High efficiency UV LED
- Peak wavelength at 365nm
- Minimum visible light
- High output 4500mW at full intensity
- Special optics will not degrade by high UV exposure
- Flicker free



Specification

Input voltage	DC 20-24V
Power consumption	12W
LED	6 x 3W High Power UV LED
Optics	25 degrees
Radiant flux output	4500 mW
Project lamp life	20,000 hrs L70 at 25C
Peak wavelength	365nm
Cable connection	22 AWG wire cable
Housing	Aluminum Extrusion
Protection rating	IP-20 Indoor use only
Dimension	L 593.2 x W 45 x H 29.15 mm L 593.2 x W 74 x H 72.35 mm
Dry weight	1.08 kg



Antari
UV EFFECTS

DarkFX

Antari Lighting And Effects
www.antari.com

DarkFX Spot 670

Features

- High efficiency UV LED
- Peak wavelength at 365nm
- Minimum visible light
- High output 6760mW at full intensity
- Special optics will not degrade by high UV exposure
- Flicker free
- 15 degrees narrow beam angle

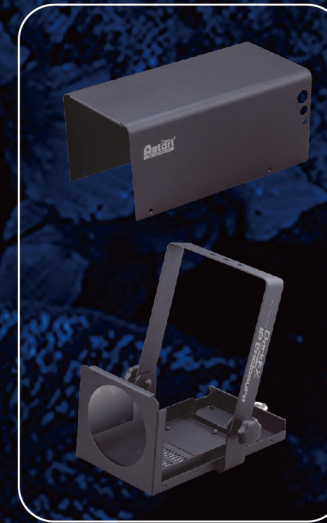


Specification

Input voltage	AC100-240V 50-60Hz
Power consumption	20W @ 110VAC 26W @ 220VAC
LED	9 x 3W High Power UV LED
Refresh rate	500 Hz
Optics	15 degrees
Radiant flux output	6760 mW
Project lamp life	20,000 hrs L70 at 25C
Peak wavelength	365nm
Control option	DMX 512, Manual
DMX channels	1, 2
Operation	2 x 16 digit display with 4 buttons
Power connection	Neutrik Powercon in/through
DMX data connection	5-pin XLR
Housing	Metal
Protection rating	IP-20 Indoor use only
Dimension	L 205 x W 125 x H 125 mm
Dry weight	2.64 kg

IP Enclosure

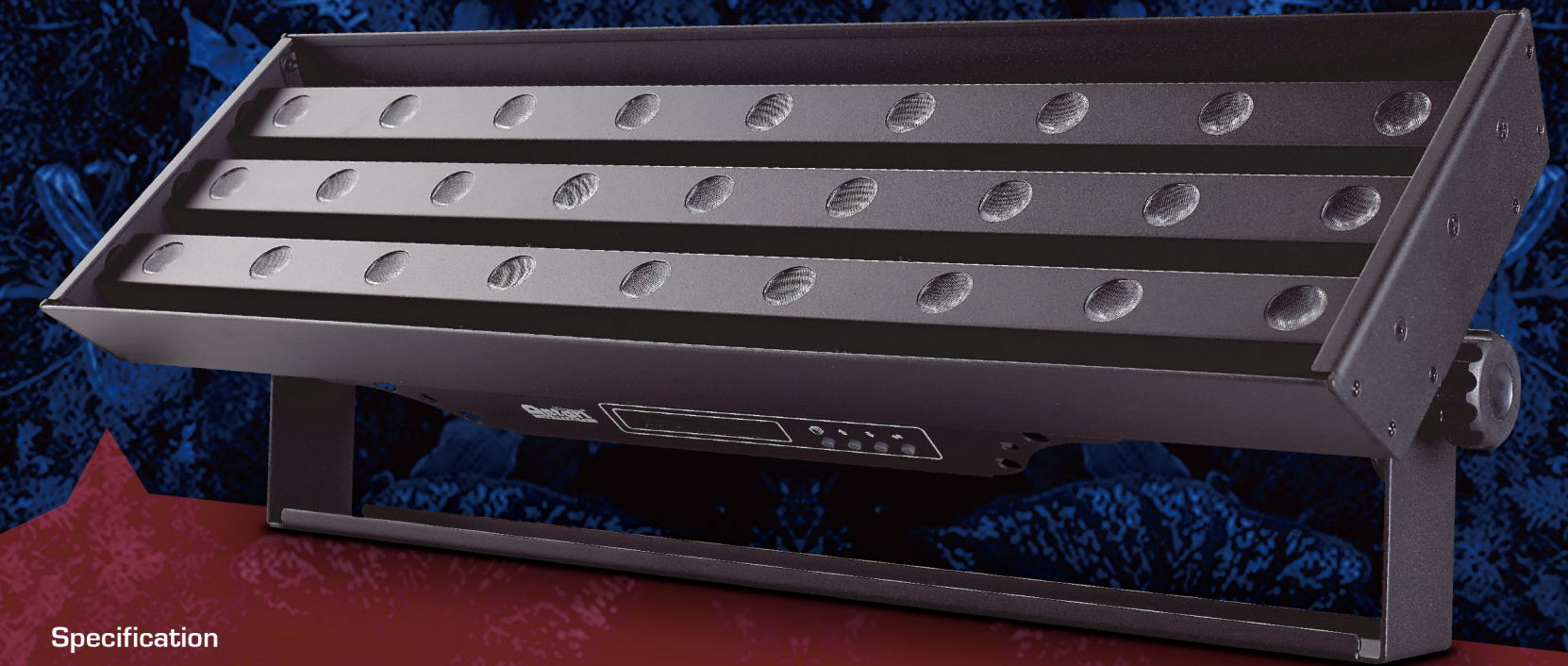
Housing	Metal
Protection rating	IP-63
Dimension	L 320.5 x W 173 x H 141.2 mm
Dry weight	3.08 kg



DarkFX Wash 2000

Features

- High efficiency UV LED
- Peak wavelength at 365nm
- Minimum visible light
- High output 20290mW at full intensity
- Special optics will not degrade by high UV exposure
- Flicker free
- Adjustable modular strips to maximize coverage



Specification

Input voltage	AC100-240V 50-60Hz	DMX channels	1, 2
Power consumption	45W @ 110VAC 50W @ 220VAC	Operation	8 bit DMX 512
LED	27 x 1.9W High Power UV LED	Power connection	2 x 16 digit display with 4 buttons
Refresh rate	500 Hz	DMX data connection	Neutrik Powercon in / through
Optics	25 degrees	Housing	5-pin XLR
Radiant flux output	20290 mW	Protection rating	Metal
Project lamp life	20,000 hrs L70 at 25C	Dimension	IP-20 Indoor use only
Peak wavelength	365nm	Dry weight	L 600 x W 181 x H 181.7 mm W/Handle
Control option	DMX 512, Manual		6.37 kg

Antari
UV EFFECTS

DarkFX



Web : www.antari.com E-mail : sales@antari.com
D08UVFX00