

**EUROLITE MD Safety rotary motor**

Mirror ball motor from 100 cm for up to 150 cm diameter

- Suitable for driving mirror balls
- 1 rotation per minute



No. 50301510 .....MD-3010  
 No. 50301540 ..... MD-3050

**Technical specifications:**

Product:	MD-3010	MD-3050
Power supply:	230 V AC, 50 Hz ~	230 V AC, 50 Hz ~
Power consumption:	7 W	7 W
Max. load WLL (4-fold):	120 kg	450 kg
Max. load BGV C1 (8-fold):	60 kg	225 kg
Max. load BGV C1 (10-fold):	50 kg	180 kg
Max. load BGV C1 (12-fold):	40 kg	150 kg
Max. diameter of mirror ball:	100 cm (EUROLITE)	150 cm (EUROLITE)
Rotation-speed:	ca. 1 U/Min.	ca. 1 U/Min.
Dimensions (LxWxH):	280 x 240 x 110 mm	280 x 240 x 110 mm
Weight:	5 kg	5 kg

**EUROLITE MD-3030 DMX safety rotary motor**

DMX controlled mirrorball motor

- Suitable for driving mirror balls up to a maximum weight of 40 kg
- This weight corresponds with a diameter of 100 cm for the EUROLITE mirror balls



No. 50301530

**Technical specifications:**

Power supply:	230 V AC, 50 Hz ~
Power consumption:	16 W
Max. load WLL (4-fold):	120 kg
Max. load BGV C1 (8-fold):	60 kg
Max. load BGV C1 (10-fold):	50 kg
Max. load BGV C1 (12-fold):	40 kg
Max. diameter of mirror ball:	100 cm (EUROLITE)
Rotation-speed:	up to 5 RPM
Dimensions (LxWxH):	285 x 235 x 190 mm
Weight:	6 kg

**EUROLITE Mounting set MD-1015/MD-1030/MD-1515**

Practical helper

- Truss mount for one EUROLITE MD-1515/MD-1030/MD-1015 mirrorball motor
- The mirrorball motor is easily clamped on the truss mount



**Technical specifications:**

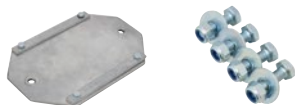
Max. load WLL (4-fold):	24 kg
Max. load BGV C1 (8-fold):	12 kg
Max. load BGV C1 (10-fold):	10 kg
Max. load BGV C1 (12-fold):	8 kg
Dimensions (LxWxH):	160 x 120 x 25 mm

No. 50301585 ..... Mounting plate for MD-1015/MD-1030/MD-1515  
 No. 50301586 ..... Mounting set (includes both parts)

**EUROLITE Mounting set for MD-2010**

Practical helper

- Truss mount for one EUROLITE MD-2010 mirrorball motor
- The mirrorball motor is easily clamped on the truss mount



**Technical specifications:**

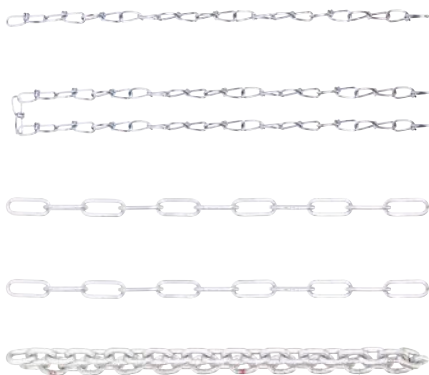
Max. load WLL (4-fold):	60 kg
Max. load BGV C1 (8-fold):	30 kg
Max. load BGV C1 (10-fold):	24 kg
Max. load BGV C1 (12-fold):	20 kg
Dimensions (LxWxH):	280 x 200 x 25 mm

No. 50301590 ..... Mounting plate for MD-2010  
 No. 50301589 ..... Mounting set (includes both parts)  
 No. 50301591 ..... MD-Screwset for MD Mounting plates

**EUROLITE Double loop chain**

Attachment chain

- Double loop chain for a safe installation of your load



No. 50301600 ..... up to Ø 40 cm, 33 cm  
 No. 50301605 ..... up to Ø 40 cm, 1 m  
 No. 50301612 ..... up to Ø 50 cm, 33 cm  
 No. 50301614 ..... up to Ø 50 cm, 1 m  
 No. 50301616 ..... up to Ø 100 cm, 1 m

**Technical specifications:**

Product:	bis Ø 40 cm, 33 cm	bis Ø 40 cm, 1m	bis Ø 50 cm, 33 cm	bis Ø 50 cm, 1 m	bis Ø 100 cm, 1 m
Max. load WLL (4-fold):	20 kg	20 kg	80 kg	80 kg	400 kg
Max. load BGV C1 (8-fold):	10 kg	10 kg	40 kg	40 kg	200 kg
Max. load BGV C1 (10-fold):	8 kg	8 kg	30 kg	30 kg	160 kg
Max. load BGV C1 (12-fold):	6.5 kg	6.5 kg	25 kg	25 kg	150 kg
Chain links:					
Diameter:	2.5 mm	2.5 mm	4 mm	4 mm	7.5 mm
Width:	11 mm	11 mm	15 mm	15 mm	32 mm
Length:	40 mm	40 mm	27 mm	27 mm	68 mm
Chain length:	0.33 m	1 m	0.33 m	1 m	1 m
Weight:	0.04 kg	0.1 kg	0.1 kg	0.3 kg	1.2 kg