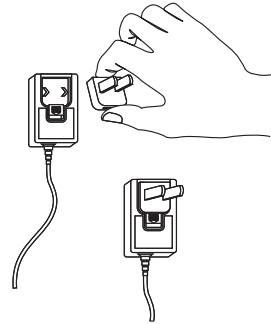
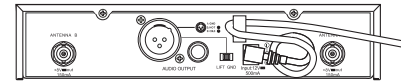


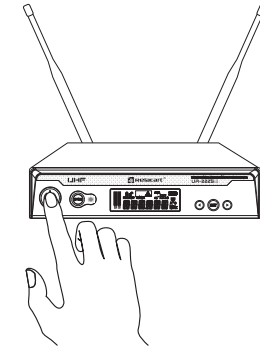
1 Installieren Sie die Antennen



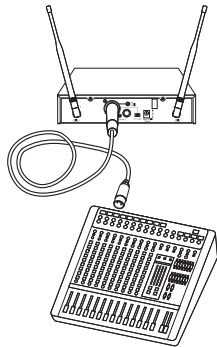
2 Stecken Sie den Adapter auf das Netzteil



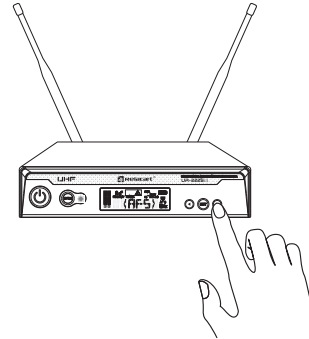
3 Stellen Sie die Stromversorgung her



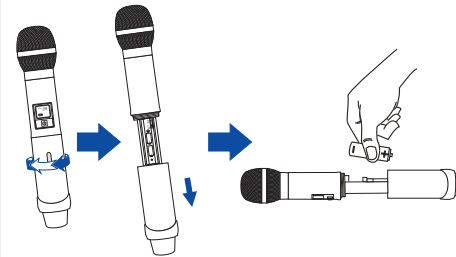
4 Schalten Sie den Empfänger ein



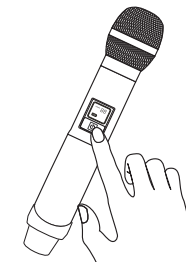
5 Schließen Sie ein Audiogerät an



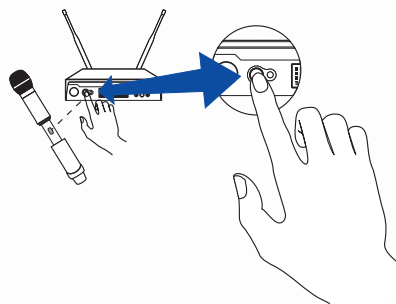
6 Halten Sie ► gedrückt bis AFS erscheint



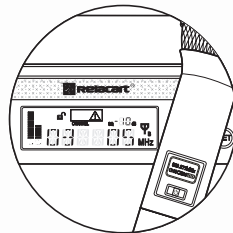
7 Setzen Sie Batterien ein



8 Schalten Sie das Mikrofon ein



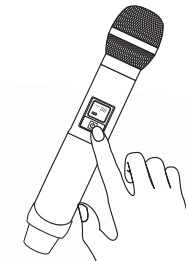
9 Synchronisieren Sie die Geräte



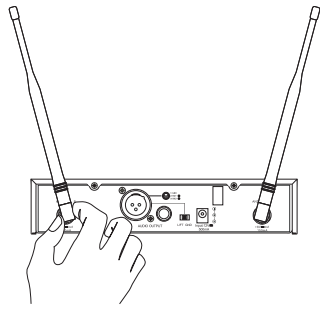
10 Überprüfen Sie den Empfang



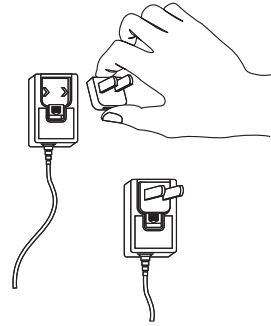
11 Sie können Ihr UR-222S verwenden



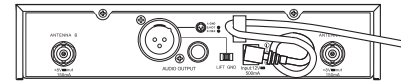
12 Kurz drücken zum Stummschalten



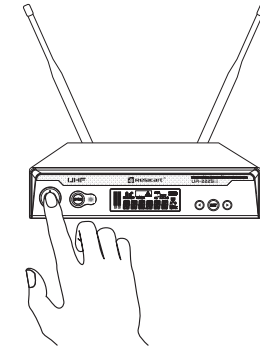
1 Install antennas



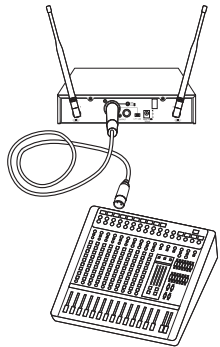
2 Install AC adapter blades



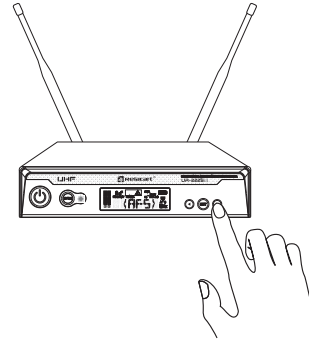
3 Plug receiver into AC power supply



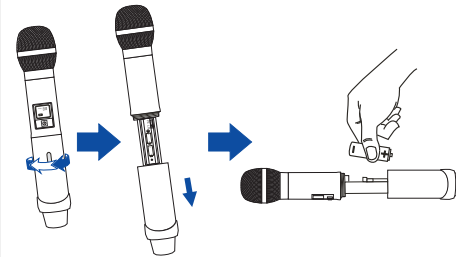
4 Turn on receiver



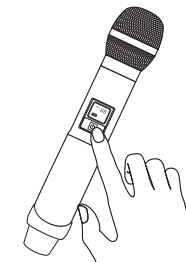
5 Connect receiver to audio system



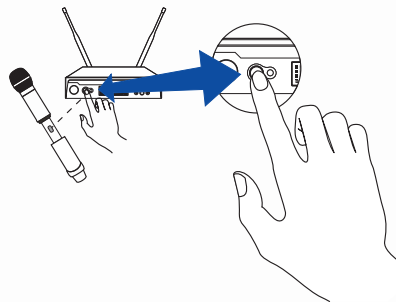
6 Press and hold ▶ until AFS is indicated



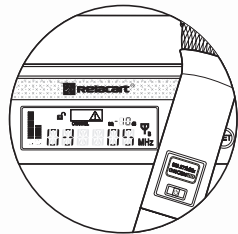
7 Insert batteries into transmitter



8 Turn on transmitter



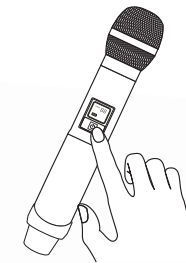
9 Sync receiver and transmitter



10 Verify reception



11 Start using your UR-222S



12 Press shortly to mute transmitter