



OMNITRONIC BD-1520

OMNITRONIC BD-1550

Belt-drive turntable

Service-manual

Serviceunterlagen

Documents techniques

Version 2.0

Spare-parts list

No.	Designation - German	Designation - English	Designation - French	Designation - Spanish	Pos.
10606001	Headshell & System OMNITRONIC S-15	Headshell & Pick-up system S 15	Cellule OMNITRONIC S-15 + Headshell	Sistema OMNITRONIC S-15 + Headshell	
E6501053	Schaltplan für BD-1520/BD-1550	Circuit diagram for BD-1520/BD-1550	Schema de connexions pour BD-1520/BD-1550	Esquema cableado para BD-1520/BD-1550	
E0196710	Platine für BD-1520 (Hauptplatine)	PCB for BD-1520 (Main PCB)	Platine für BD-1520 (Hauptplatine)	Platine für BD-1520 (Hauptplatine)	77
E0196711	Platine für BD-1520 (33/45 RPM)	PCB for BD-1520 (33/45 RPM)	Platine für BD-1520 (33/45 RPM)	Platine für BD-1520 (33/45 RPM)	58
E0196712	Platine für BD-1520 (PLAY/STOP)	PCB for BD-1520 (PLAY/STOP)	Platine für BD-1520 (PLAY/STOP)	Platine für BD-1520 (PLAY/STOP)	52
E0196713	Glimmlampe für Strobe-Beleuchtung BD-1520	Strobe lamp for BD-1520	Lampe stroboscopique pour BD-1550	Lámpara strobe para BD-1550	45
E0196714	START/STOP-Taster für BD-1520	START/STOP-contact switch for BD-1520	START/STOP-Interrupteur pour BD-1520	START/STOP-pulsador para BD-1520	47
E0196715	33/45 RPM-Taster für BD-1520	33/45 RPM-contact switch for BD-1520	33/45 RPM-Interrupteur pour BD-1520	33/45 RPM-pulsador para BD-1520	57
E0196716	Trafo für BD-1520	Transformer for BD-1520	Transformateur pour BD-1520	Transformador para BD-1520	61
E0196717	Motor für BD-1520	Motor for BD-1520	Moteur pour BD-1520	Motor para BD-1520	16
E0196718	Pitchfader für BD-1520	Pitchfader for BD-1520	Pitchfader pour BD-1520	Pitchfader para BD-1520	78
E0196719	Spannungswahlschalter für BD-1520	Tension-setting switch for BD-1520	Interr.p.choisir la tension BD-1520	Inter.p.seleccionar la tension BD-1520	93
E0196720	Antriebsriemen für BD-1520	Driving-belt for BD-1520	Courroie de transmission pour BD-1520	Correa de transmisión para BD-1520	8
E0196730	Scharnier für BD-1520	Hinge for BD-1520	Charnière capot pour BD-1520	Charnela para BD-1520	
E0196731	Tonarm für BD-1520	Tone-arm for BD-1520	Bras de lecture pour BD-1520	Brazo del fonocaptor para BD-1520	35
E0196732	Tonarmgewicht für BD-1520	Counterweight for BD-1520	Contrepoids pour BD-1520	Contrapeso para BD-1520	36
E0196740	Abdeckhaube für BD-1520	Dust-cover for BD-1520	Couvercle pour BD-1520	Cubierta para BD-1520	3
E0196742	Puck für BD-1520	Puck for BD-1520	Puck pour BD-1520	Puck para BD-1520	9
E0196744	Faderknopf für BD-1520	Fader knob for BD-1520	Bouton fader pour BD-1520	Botón fader para BD-1520	12
E0196760	Platine für BD-1520 (Steuerung)	PCB for BD-1520 (Controller)	Platine pour BD-1520 (Contrôleur)	Platina para BD-1520 (Controler)	
E0196766	Plattenteller für BD-1520	Platter for BD-1520	Plateau pour BD-1520	Plato para BD-1520	6
E0196770	START/STOP-Knopf für BD-1520	START/STOP-button for BD-1520	START/STOP-bouton pour BD-1520	START/STOP-botón para BD-1520	46
E0196771	45 RPM-Knopf für BD-1520	45 RPM-button for BD-1520	45 RPM-bouton pour BD-1520	45 RPM-botón para BD-1520	55
E0196772	33 RPM-Knopf für BD-1520	33 RPM-button for BD-1520	33 RPM-bouton pour BD-1520	33 RPM-botón para BD-1520	54
E0196773	POWER-Knopf für BD-1520	POWER-button for BD-1520	POWER-bouton pour BD-1520	POWER-botón para BD-1520	42

CLASSIFICATION	NO.
	PAGE: 1-2
SUBJECT	GENERAL SPECIFICATION
DATE: March 3, 1999	

6. *ACCESSORIES SUPPLIED*

Instruction manual x 1, Headshell x 1,
45 rpm adaptor x 1

7. *SPECIFICATION*

<i>DESCRIPTIONS</i>	<i>UNIT</i>	<i>NOMINAL</i>	<i>LIMIT</i>
(1) Output Difference	dB	2.3	2.5
(2) Out put Level	mv	1.7~3.5	1.5~3.5
(3) Speed (Speed Range)	HZ	2.7K ↓, 3.3K ↑	2.7K ↓, 3.27K ↑
(4) Speed (Center Range)	HZ	2990~3020	2970~3050
(5) Wow and Flutter	%	0.23	0.25
(6) Channel separation	dB	16	15

OMNITRONIC BD-1520/BD-1550	APPROVAL	CHECK	DESIGN

CLASSIFICATION

NO.

SUBJECT

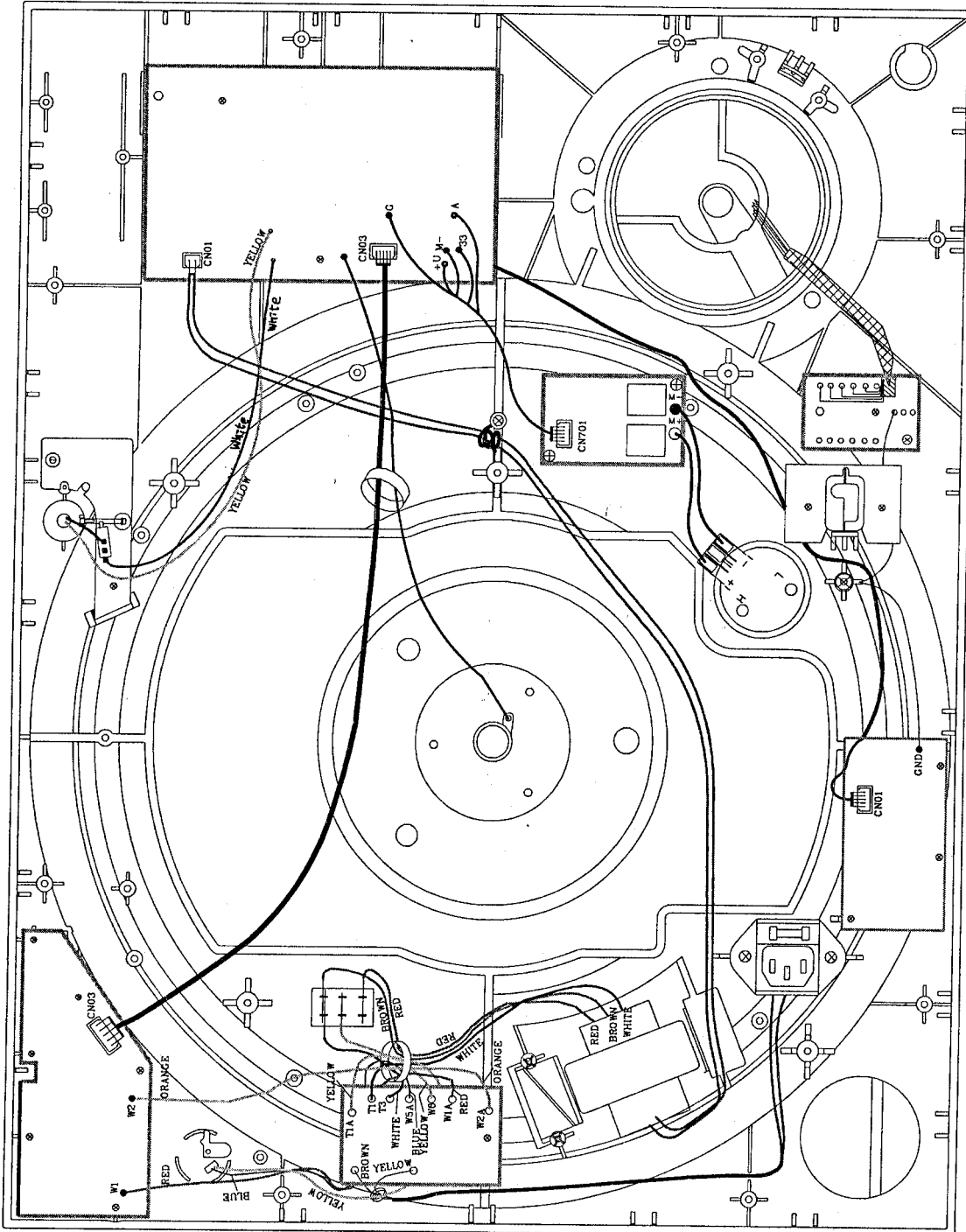
POINT TO POINT WIRING DIAGRAM

PAGE:

2

DATE:

March 3, 1999



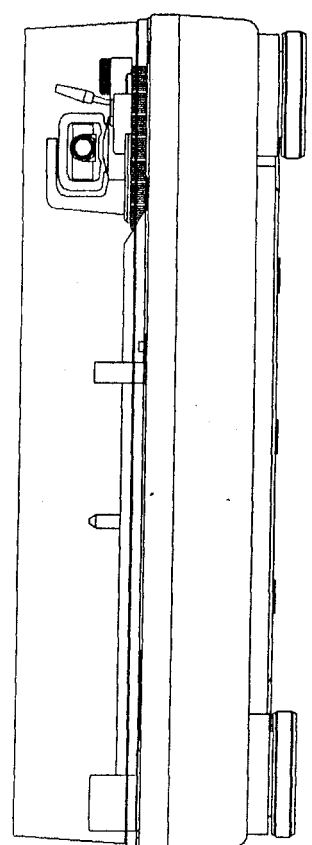
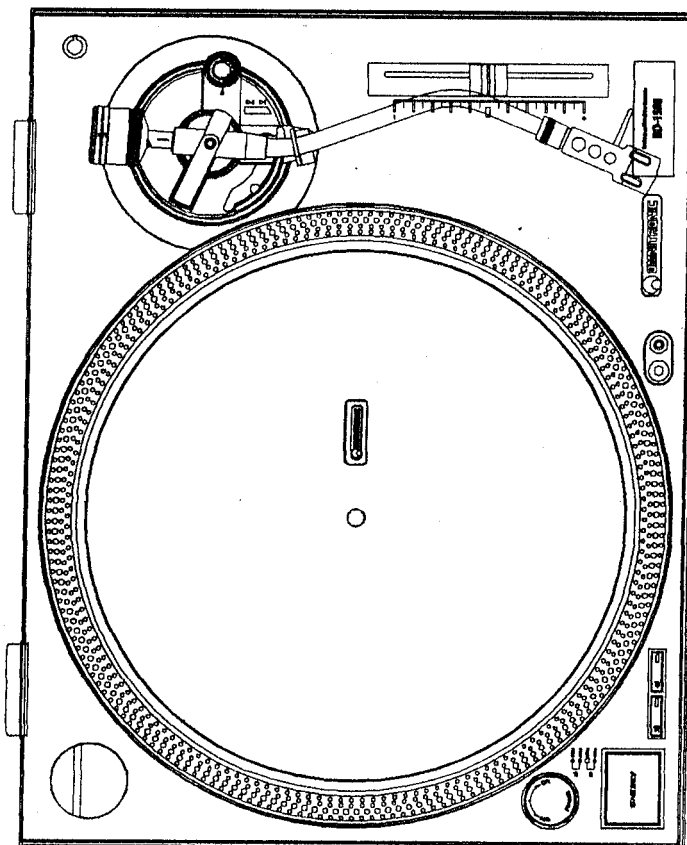
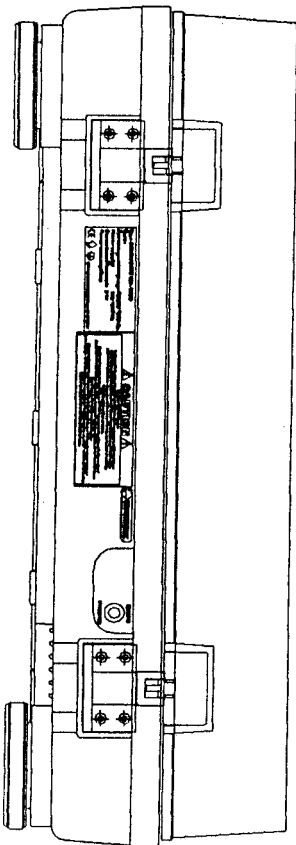
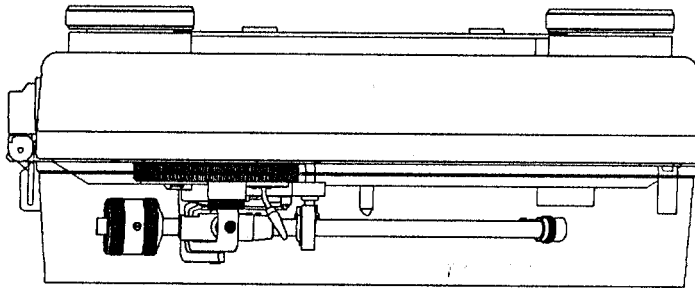
**OMNITRONIC
BD-1520/BD-1550**

APPROVAL

CHECK

DESIGN

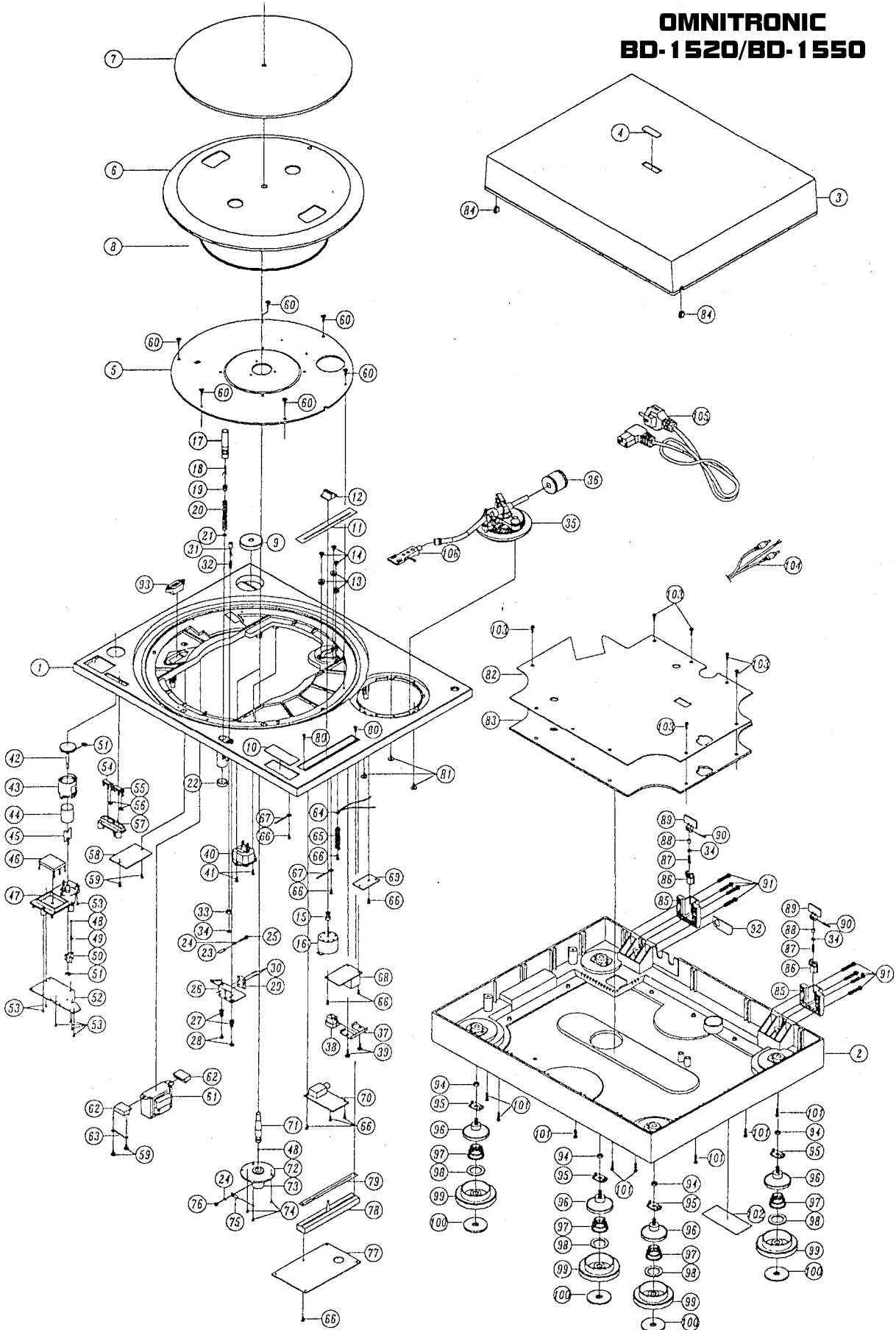
**OMNITRONIC
BD-1520/BD-1550**



BD-1550

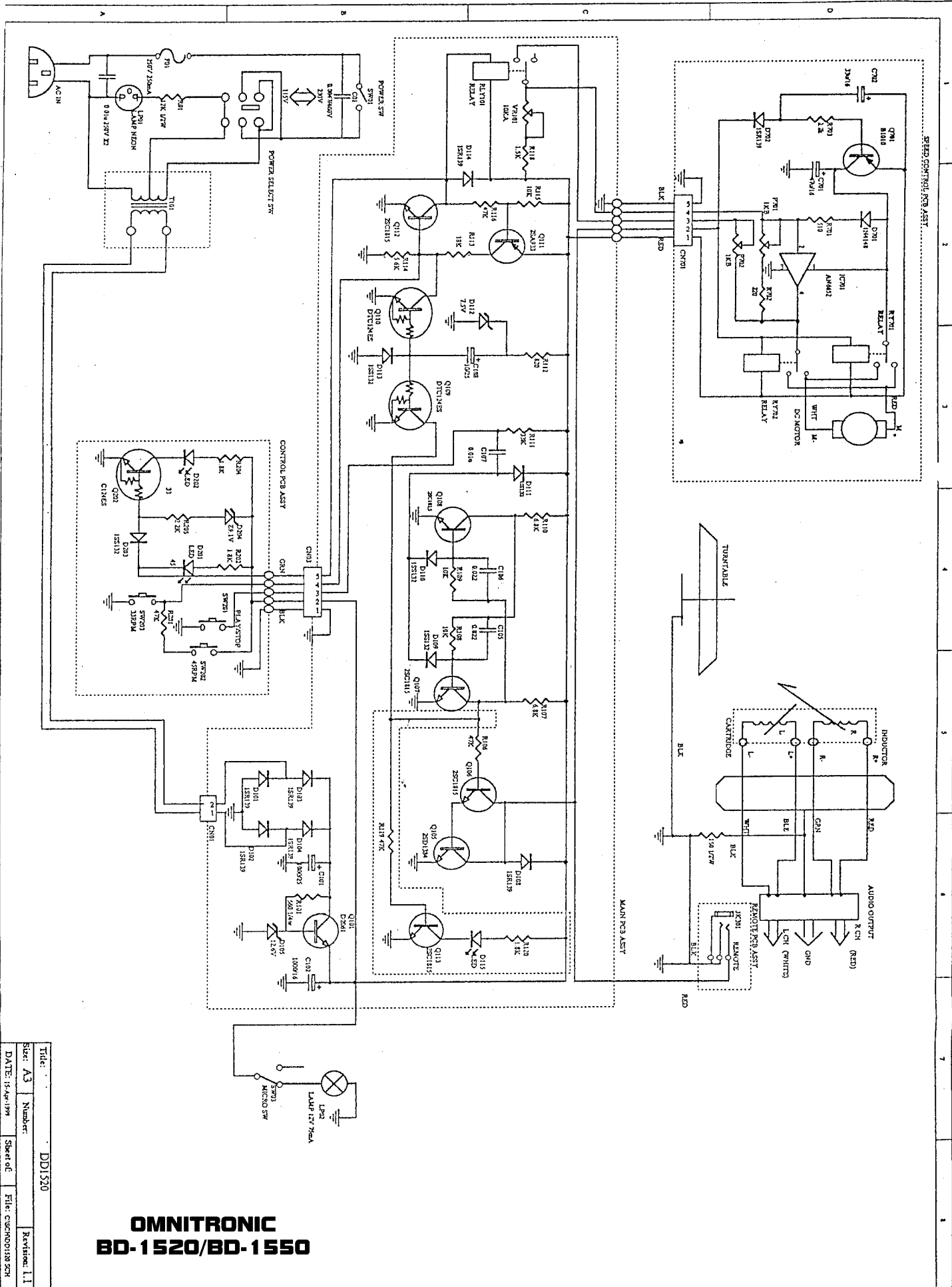
APPROVED		CHECKED		DESIGNED		DRAWING		SIGN		SIZE		DESCRIPTION		
STM	DATE	DESCRIPTION	REVISIONS	DATE	BY	DATE	BY	DATE	BY	DATE	BY	PART NO.	PROCESS	
												99.2/7		
TOLERANCES OTHERWISE SPECIFIC ANGULAR														

OMNITRONIC BD-1520/BD-1550



BD-1550
BD-1520

1=8



OMNITRONIC
BD-1520/BD-1550

Title: DD1520
 Size: A3 Number:
 Date: 15-Apr-1979 Sheet of 6 File: C:\CNC\DD1520 SCH
 Revision: 1.1