



OMNITRONIC CDP-430

Single-CD-Player

Classic-Edition

Design-Edition

Service-manual

Serviceunterlagen

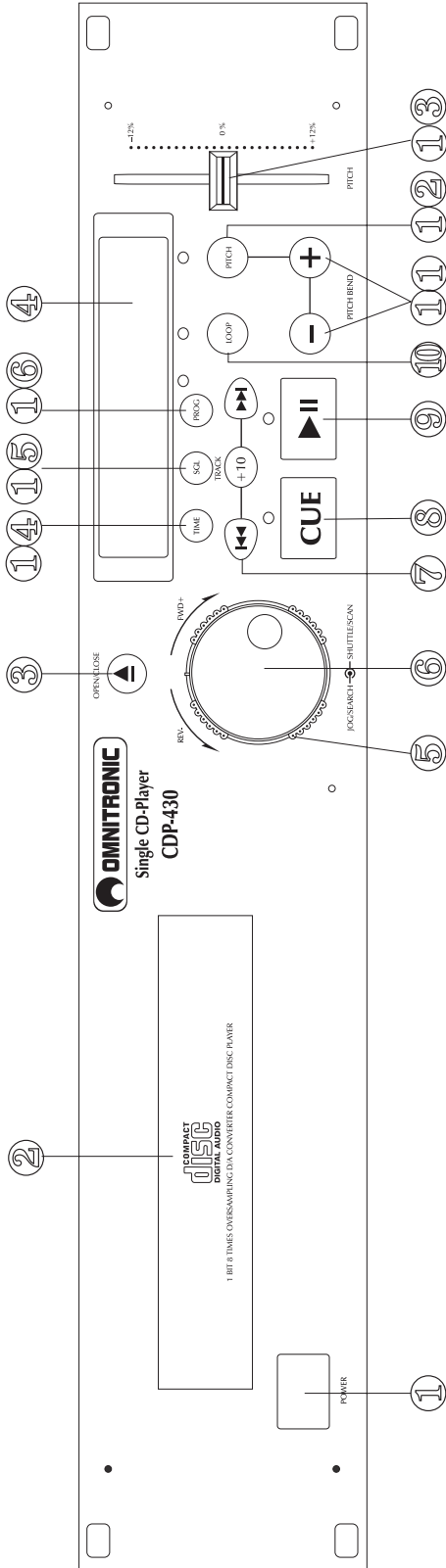
Documents techniques

Version 2.0

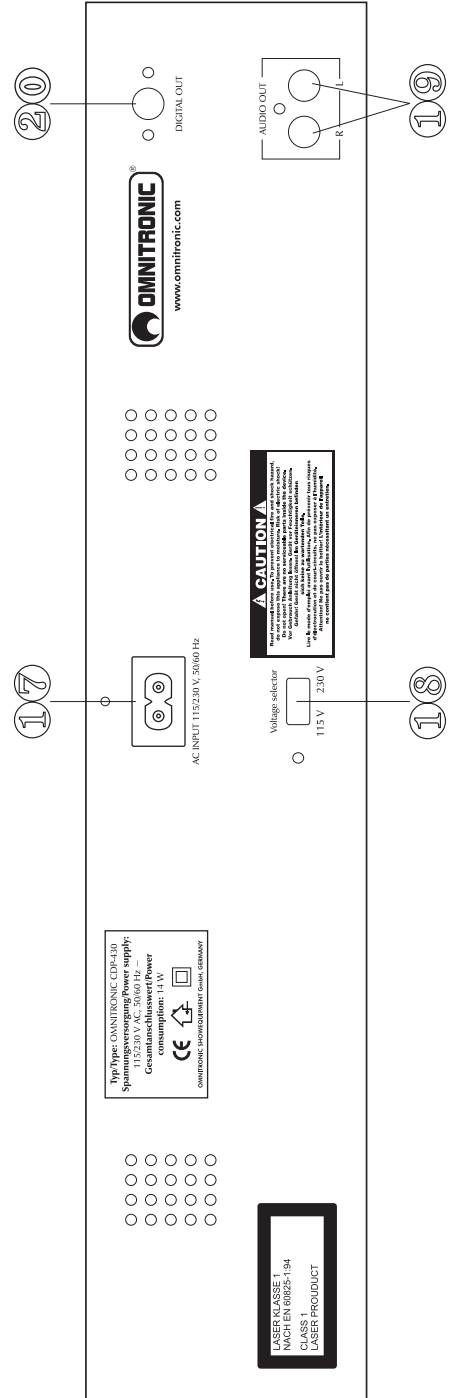
Spare-parts list

No.	Designation - German	Designation - English	Designation - French	Designation - Spanish	Pos.
E6501036	Schaltplan für CDP-430	Circuit diagram for CDP-430	Schema de connexions pour CDP-430	Esquema cableado para CDP-430	
E0190711	Trafo für CDP-430	Transformer for CDP-430	Transformateur pour CDP-430	Transformador para CDP-430	5
E0190712	Pitchfader für CDP-430	Pitchfader for CDP-430	Pitchfader pour CDP-430	Pitchfader para CDP-430	10
E0190713	Netzschalter für CDP-430	Powerswitch for CDP-430	Interrupteur pour CDP-430	Interruptor para CDP-430	16
E0190714	Spannungswahlschalter für CDP-430	Tension-setting switch for CDP-430	Interr.p.choisir la tension CDP-430	Inter.p.seleccionar la tension CDP-430	34
E0190715	Platine (Display) für CDP-430	PCB (Display) for CDP-430	Platine (Display) pour CDP-430	Platina (Display) para CDP-430	23
E0190716	Platine (Digital-Output) für CDP-430	PCB (digital-output) for CDP-430	Platine (digital-output) pour CDP-430	Platina (digital-output) para CDP-430	30
E0190717	Laufwerk für CDP-430	Drive for CDP-430	Lecteur pour CDP-430	Unidad drive para CDP-430	31
E0190720	Faderknopf für CDP-430	Faderknob for CDP-430	Bouton de fader pour CDP-430	Botón de fader para CDP-430	10
E0190721	JOG/SEARCH-Knopf für CDP-430	JOG/SEARCH-button for CDP-430	JOG/SEARCH-bouton pour CDP-430	JOG/SEARCH-botón para CDP-430	11
E0190722	SHUTTLE/SCAN-Knopf für CDP-430	SHUTTLE/SCAN-button for CDP-430	SHUTTLE/SCAN-bouton pour CDP-430	SHUTTLE/SCAN-botón para CDP-430	12
E0190723	POWER-Knopf für CDP-430	POWER-button f. CDP-430	POWER-Knopf für CDP-430	POWER-Knopf für CDP-430	14
E0190724	OPEN/CLOSE-Knopf für CDP-430	OPEN/CLOSE-button for CDP-430	OPEN/CLOSE-Knopf für CDP-430	OPEN/CLOSE-Knopf für CDP-430	20
E0190725	Tastenfeld für CDP-430	Buttons for CDP-430	Boutons pour CDP-430	Botóns para CDP-430	21
E0190730	Frontplatte für CD-Schubfach CDP-430	Front panel for disc tray CDP-430	Panneau avant pour tiroir CDP-430	Panel frontal para cajón CDP-430	13
E0190790	Frontplatte für CDP-430	Front panel for controller CDP-430	Frontplatte für CDP-430	Frontplatte für CDP-430	9

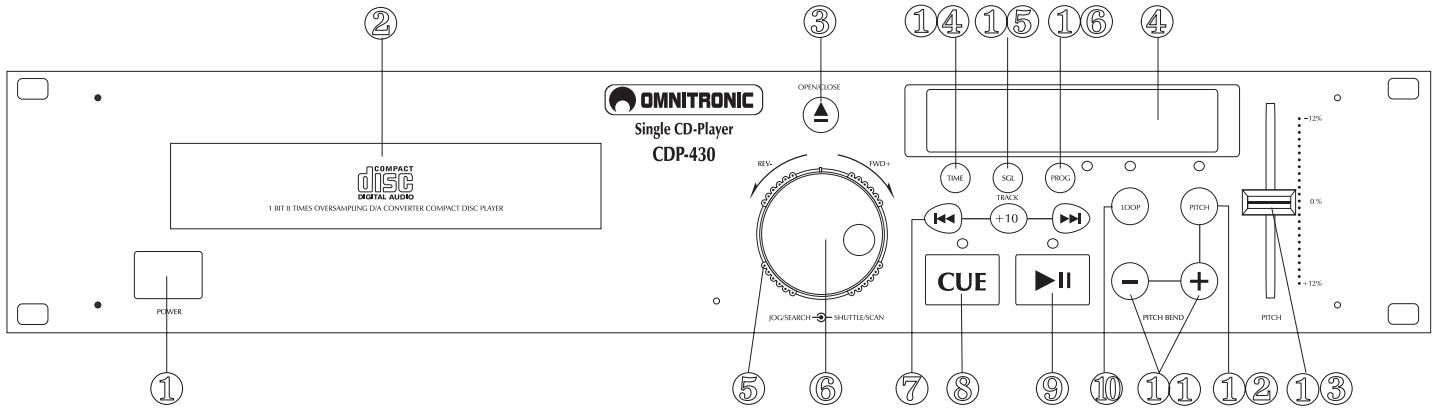
Vorderseite Frontpanel Face avant



Rückseite Rear panel Dos

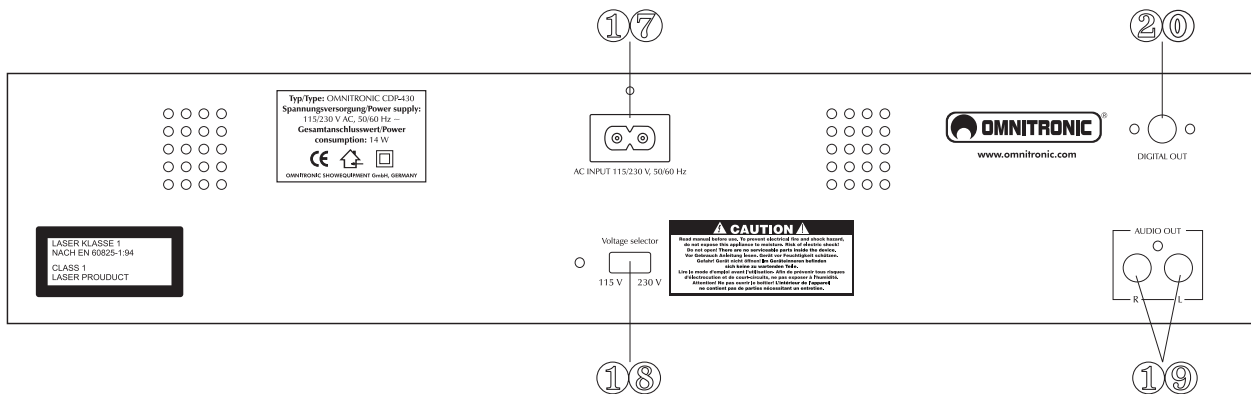


Frontpanel



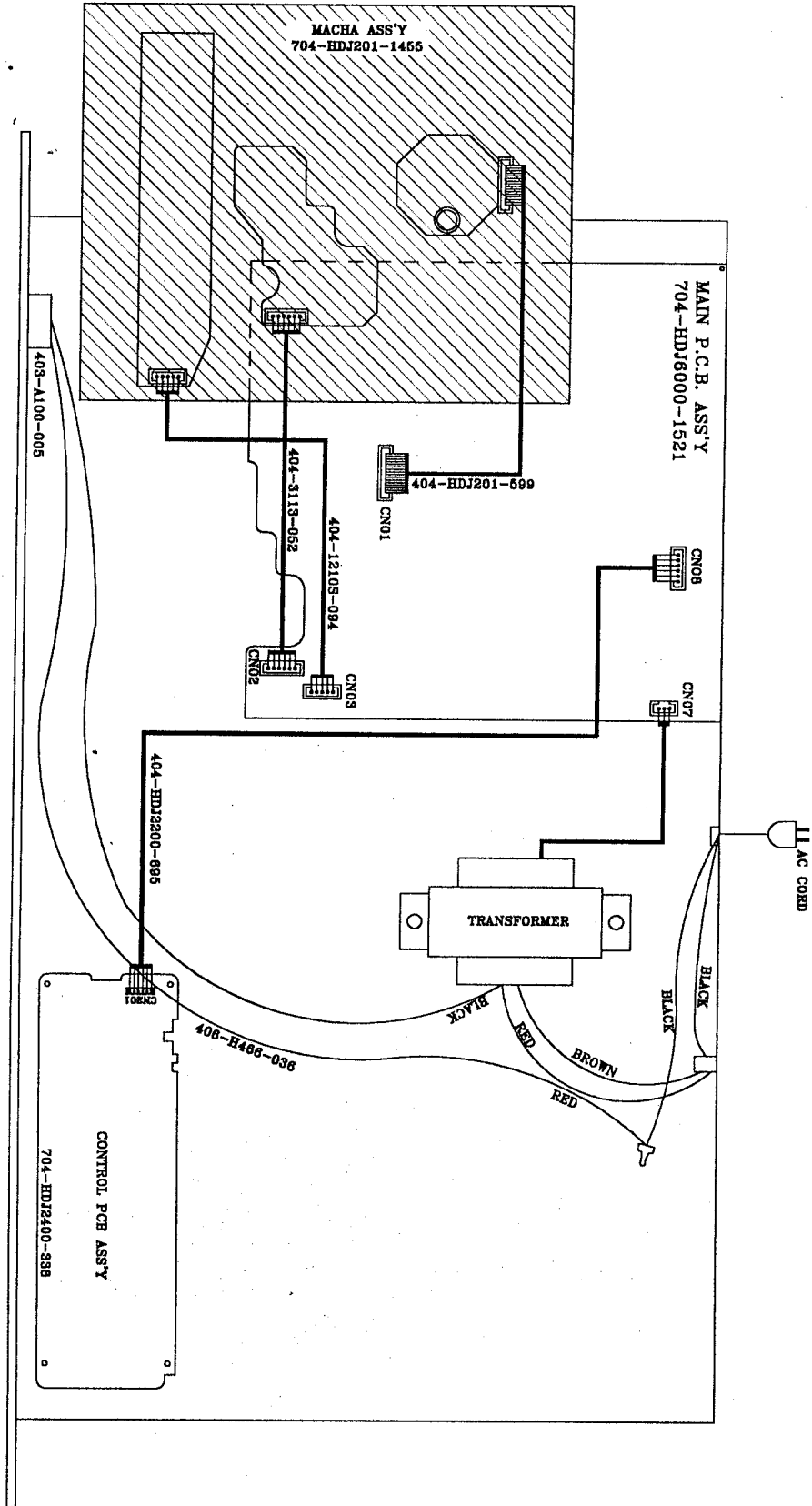
1. POWER SWITCH
2. DISC-TRAY
3. OPEN/CLOSE BUTTON
4. DISPLAY
5. SHUTTLE-WHEEL
6. JOG-WHEEL
7. SKIP-BUTTONS
8. CUE-BUTTON
9. PLAY/PAUSE-BUTTON
10. LOOP-BUTTON
11. PITCH BEND-BUTTONS
12. PITCH-BUTTON
13. PITCHFADER
14. TIME-BUTTON
15. SINGLE-BUTTON
16. PROGRAM-BUTTON

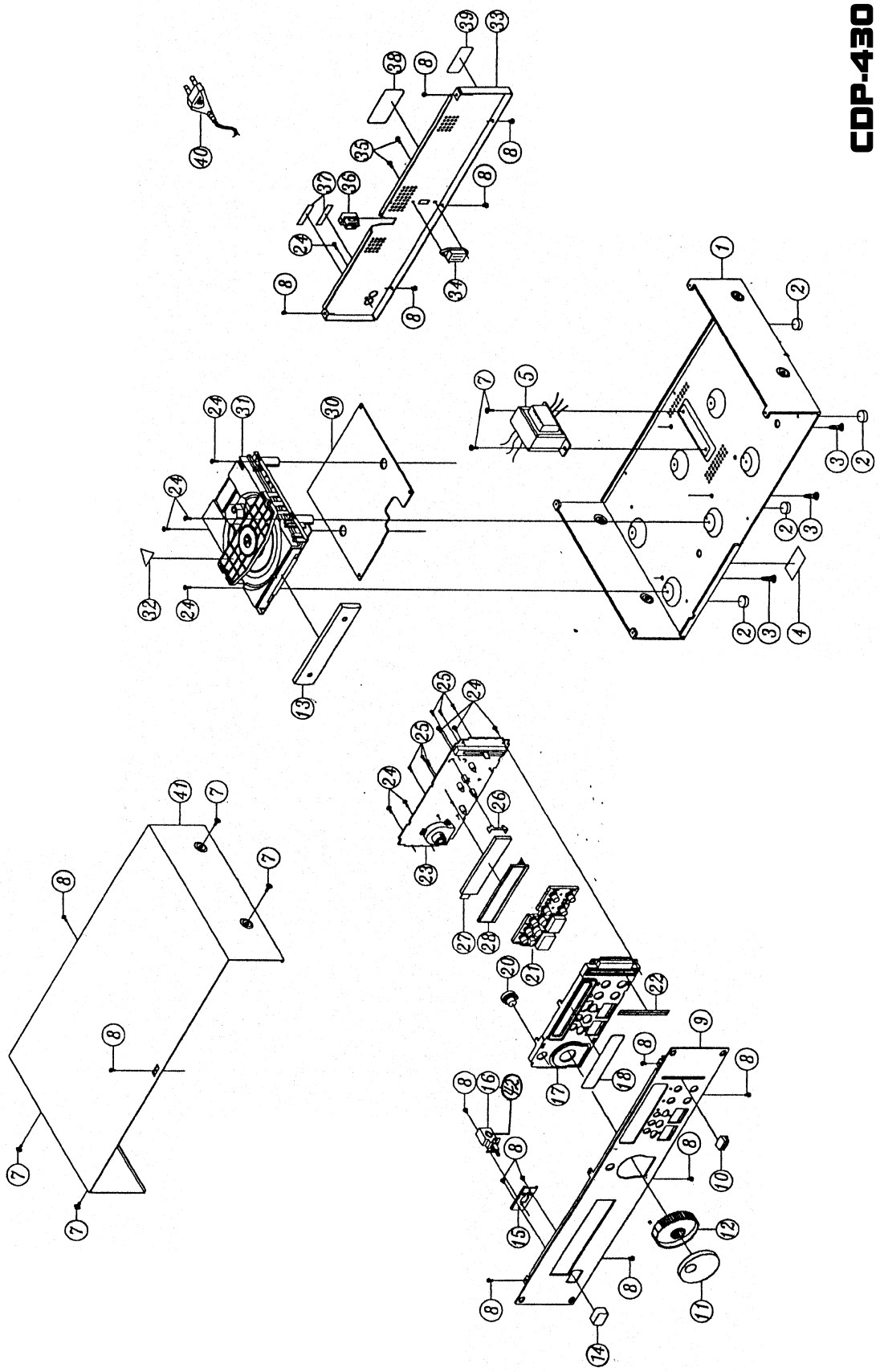
4.3 Rearpanel

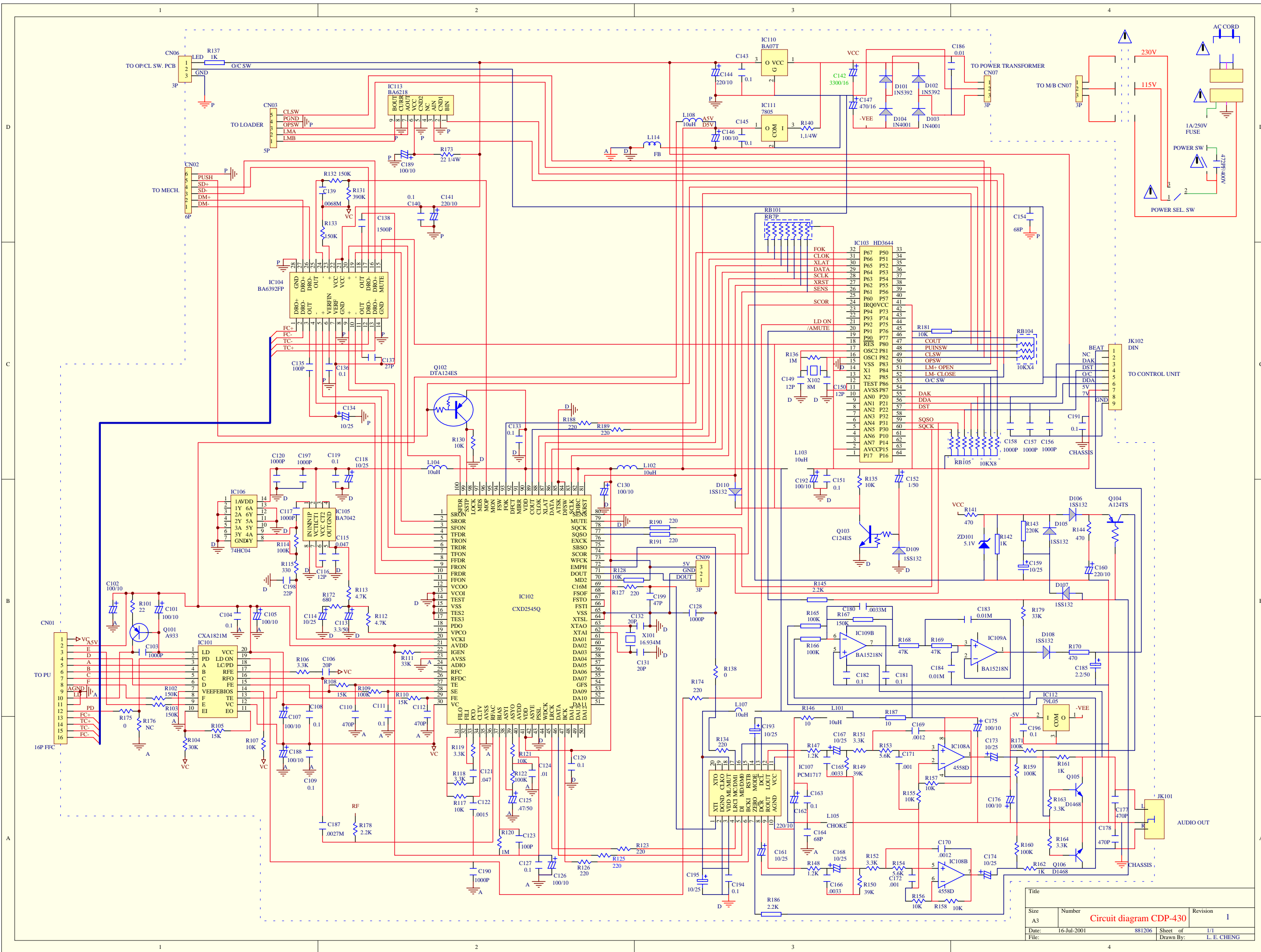


17. AC CONNECTION
18. VOLTAGE SELECTOR
19. AUDIO OUT-SOCKETS
20. DIGITAL OUT-SOCKET

CLASSIFICATION	NO. CDP-430
	PAGE:
SUBJECT	DATE:
	POINT TO POINT WIRING DIAGRAM

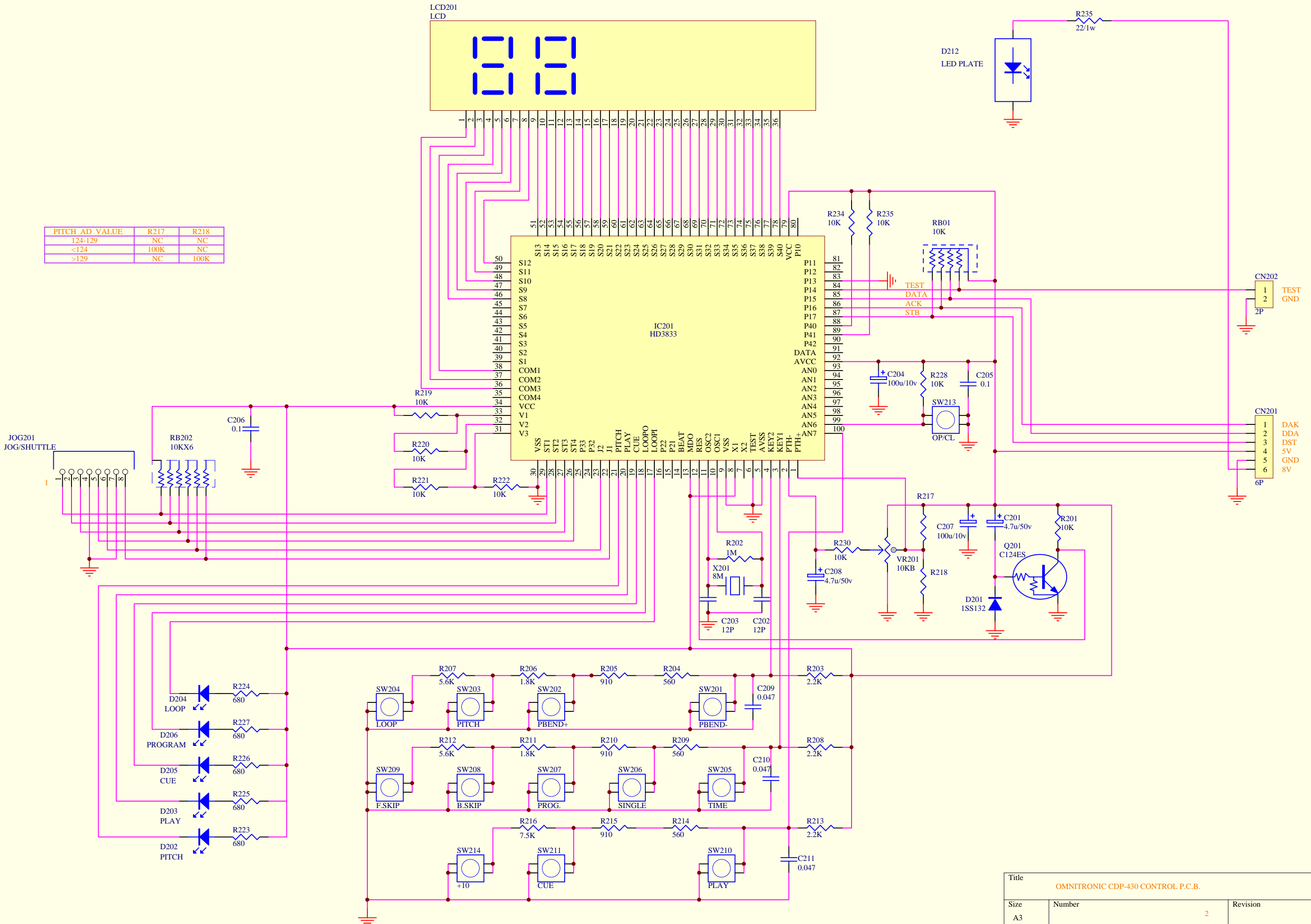






Title			
Size	Number	Circuit diagram CDP-430	Revision
A3			1
Date:	16-Jul-2001	881206	Sheet of 1/1
File:			Drawn By: L. E. CHENG

PITCH_AD_VALUE	R217	R218
124-129	NC	NC
<124	100K	NC
>129	NC	100K



Title			OMNITRONIC CDP-430 CONTROL P.C.B.		
Size	Number	Revision			
A3		2			
Date:	28-Aug-2001	Sheet	of	1	
CHANG YU HSIN					