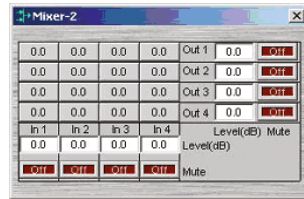
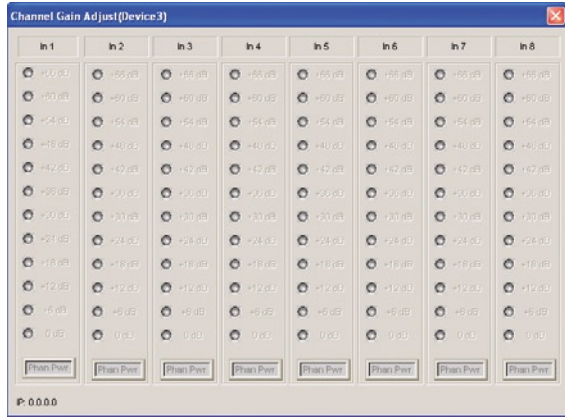


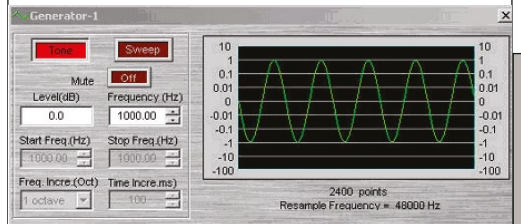
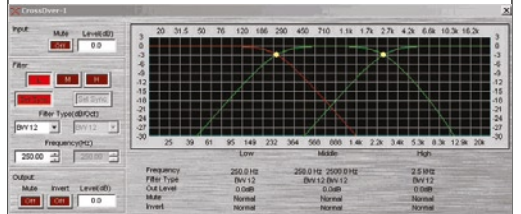
OMNITRONIC CNS-24 Audio network switch

No. 10356495

- + Real-time audio transmission
- + 24 ports/100Mbit



- Real-time audio transmission of the CobraNet(TM) signal
- 100Mbit data transmission rate
- 24 ports with RJ-45 connectors
- Maximum cable length 100 m (category 5 cables)
- Power indicator
- 2 function indicators per port
- Automatic adjustment to regional power supply systems
- Incl. mounting brackets for 483 mm rack installation (19") (1 U)



Technical specifications:

| | |
|---------------------|--|
| Power supply: | 100-240 V AC, 50/60 Hz ~ |
| Power consumption: | 10 W |
| Standard: | IEEE 802.3u |
| 24 ports: | RJ-45, 100Mbit |
| LED indicators: | power, 2 indicators per port |
| Dimensions (WxDxH): | 430 x 180 x 45 mm |
| | Rack installation with 1 U with brackets |
| Weight: | 2.8 kg |

| Technical specifications: | NAP-8 CH processor | NAP-8 OUT processor | NAP-26 processor | NAT-16 IN transmitter | NAT-16 OUT transmitter | NAT-124 transmitter | NAT-412 transmitter | NAT-88 transmitter | NAT-22 transmitter |
|-----------------------------|---------------------------------------|---------------------------------------|---------------------------------------|---------------------------------------|---------------------------------------|---------------------------------------|---------------------------------------|---------------------------------------|---------------------------------------|
| Product: | NAP-8 CH processor | NAP-8 OUT processor | NAP-26 processor | NAT-16 IN transmitter | NAT-16 OUT transmitter | NAT-124 transmitter | NAT-412 transmitter | NAT-88 transmitter | NAT-22 transmitter |
| Power supply: | 100-240 V AC, 50/60 Hz ~ | 100-240 V AC, 50/60 Hz ~ | 100-240 V AC, 50/60 Hz ~ | 100-240 V AC, 50/60 Hz ~ | 100-240 V AC, 50/60 Hz ~ | 100-240 V AC, 50/60 Hz ~ | 100-240 V AC, 50/60 Hz ~ | 100-240 V AC, 50/60 Hz ~ | 100-240 V AC, 50/60 Hz ~ |
| Power consumption: | 30 W | 30 W | 30 W | 30 W | 30 W | 30 W | 30 W | 30 W | 30 W |
| DSP capability: | 200 MIPS, 40 bit floating point | 200 MIPS, 40 bit floating point | 200 MIPS, 40 bit floating point | 200 MIPS, 40 bit floating point | 200 MIPS, 40 bit floating point | 200 MIPS, 40 bit floating point | 200 MIPS, 40 bit floating point | 200 MIPS, 40 bit floating point | 200 MIPS, 40 bit floating point |
| 2 RJ-45 network connectors: | according to IEEE 802.3 standards | according to IEEE 802.3 standards | according to IEEE 802.3 standards | according to IEEE 802.3 standards | according to IEEE 802.3 standards | according to IEEE 802.3 standards | according to IEEE 802.3 standards | according to IEEE 802.3 standards | according to IEEE 802.3 standards |
| RS-232 connector: | 1; type D (9 pins) | 1; type D (9 pins) | 1; type D (9 pins) | 2; type D (9 pins) | 2; type D (9 pins) | 2; type D (9 pins) | 2; type D (9 pins) | 2; type D (9 pins) | 2; type D (9 pins) |
| Network input channels: | 8 | 8 | 6 | | | | | | |
| Network output channels: | 8 | 8 | 2 | | | | | | |
| Analog audio inputs: | | | | | | | | | |
| Number of channels: | | | 2 (XLR, bal.) | 16 (XLR, bal.) | | 12 (XLR, bal.) | 4 (XLR, bal.) | 8 (XLR, bal.) | 2 (XLR, bal.) |
| Sampler frequency: | 48 kHz | 48 kHz | 48 kHz | 48 kHz | 48 kHz | 48 kHz | 48 kHz | 48 kHz | 48 kHz |
| Quantization resolution: | 20 bit | 20 bit | 20 bit | 20 bit | 20 bit | 20 bit | 20 bit | 20 bit | 20 bit |
| Frequency range: | 20-20,000 Hz; ±0.2 dB | 20-20,000 Hz; ±0.2 dB | 20-20,000 Hz; ±0.2 dB | 20-20,000 Hz; ±0.2 dB | 20-20,000 Hz; ±0.2 dB | 20-20,000 Hz; ±0.2 dB | 20-20,000 Hz; ±0.2 dB | 20-20,000 Hz; ±0.2 dB | 20-20,000 Hz; ±0.2 dB |
| THD: | 0.005 % (+4 dBu) | 0.005 % (+4 dBu) | 0.005 % (+4 dBu) | 0.005 % (+4 dBu) | 0.005 % (+4 dBu) | 0.005 % (+4 dBu) | 0.005 % (+4 dBu) | 0.005 % (+4 dBu) | 0.005 % (+4 dBu) |
| Dynamic range: | 103 dBA | 103 dBA | 103 dBA | 103 dBA | 103 dBA | 103 dBA | 103 dBA | 103 dBA | 103 dBA |
| Input gain adjustment: | | | 0-66 dBu | 0-66 dBu | | 0-66 dBu | 0-66 dBu | 0-66 dBu | 0-66 dBu |
| Maximum input level: | +21 dBu (bal.) | | +21 dBu (bal.) | +21 dBu (bal.) | | +21 dBu (bal.) | +21 dBu (bal.) | +21 dBu (bal.) | +21 dBu (bal.) |
| Input impedance: | 100 Ω | | 20 kΩ | 20 kΩ | | 20 kΩ | 20 kΩ | 20 kΩ | 20 kΩ |
| Analog audio outputs: | | | | | | | | | |
| Number of channels: | | 8 (XLR, bal.) | 6 (XLR, bal.) | | 2 (XLR, bal.) | 4 (XLR, bal.) | 12 (XLR, bal.) | 8 (XLR, bal.) | 2 (XLR, bal.) |
| Sampler frequency: | | 48 kHz | 48 kHz | | 48 kHz | 48 kHz | 48 kHz | 48 kHz | 48 kHz |
| Quantization resolution: | | 20 bit | 20 bit | | 20 bit | 20 bit | 20 bit | 20 bit | 20 bit |
| Frequency range: | | 20-20,000 Hz; ±0.2 dB | 20-20,000 Hz; ±0.2 dB | | 20-20,000 Hz; ±0.2 dB | 20-20,000 Hz; ±0.2 dB | 20-20,000 Hz; ±0.2 dB | 20-20,000 Hz; ±0.2 dB | 20-20,000 Hz; ±0.2 dB |
| THD: | | 0.005 % (+4 dBu) | 0.005 % (+4 dBu) | | 0.005 % (+4 dBu) | 0.005 % (+4 dBu) | 0.005 % (+4 dBu) | 0.005 % (+4 dBu) | 0.005 % (+4 dBu) |
| Dynamic range: | | 103 dBA | 103 dBA | | 103 dBA | 103 dBA | 103 dBA | 103 dBA | 103 dBA |
| Maximum output level: | | +21 dBu (bal.) | +21 dBu (bal.) | | +21 dBu (bal.) | +21 dBu (bal.) | +21 dBu (bal.) | +21 dBu (bal.) | +21 dBu (bal.) |
| Output impedance: | | 100 Ω | 100 Ω | | 100 Ω | 100 Ω | 100 Ω | 100 Ω | 100 Ω |
| Dimensions: | 430 x 45 x 298 mm | 430 x 45 x 298 mm | 430 x 45 x 298 mm | 430 x 89 x 330 mm | 430 x 89 x 330 mm | 430 x 89 x 330 mm | 430 x 89 x 330 mm | 430 x 89 x 330 mm | 430 x 89 x 330 mm |
| | 19" dimensions with 1 U with brackets | 19" dimensions with 1 U with brackets | 19" dimensions with 1 U with brackets | 19" dimensions with 2 U with brackets | 19" dimensions with 2 U with brackets | 19" dimensions with 2 U with brackets | 19" dimensions with 2 U with brackets | 19" dimensions with 2 U with brackets | 19" dimensions with 2 U with brackets |
| Weight: | 4.3 kg | 4.3 kg | 4.3 kg | 7.3 kg | 7.3 kg | 7.3 kg | 7.3 kg | 7.3 kg | 7.3 kg |