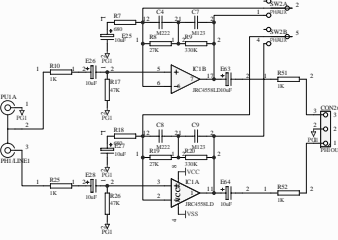


CH1 PH1 / LINE



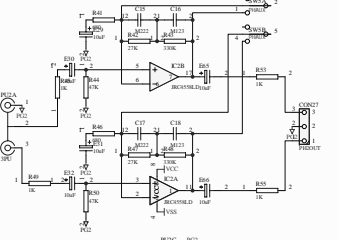
LINE1



LINE2



CH2 PH2 / LINE



LINE3



LINE4



LINE5



LINE8



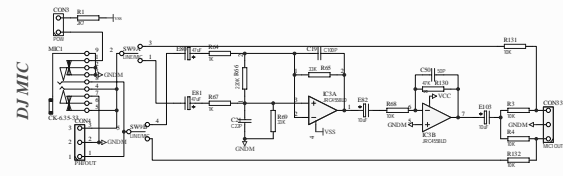
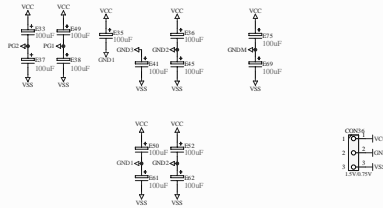
LINE7



LINE10



REC



MIC1



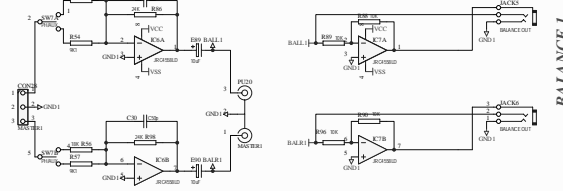
MIC2



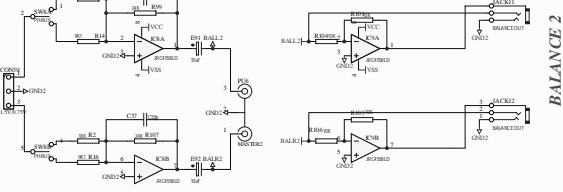
LINE6



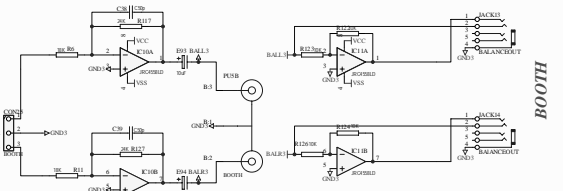
LINE9



BALANCE 1

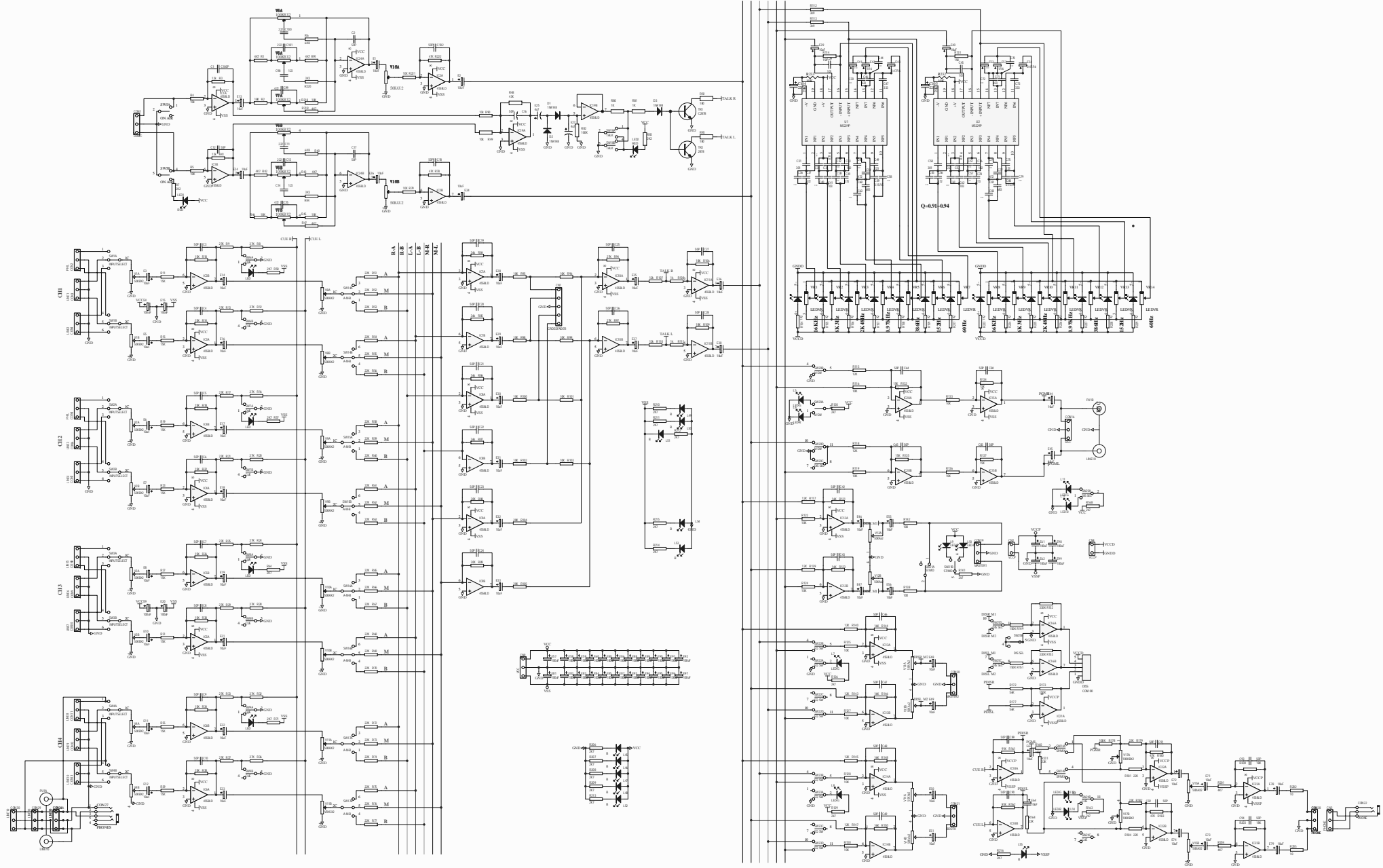


BALANCE 2

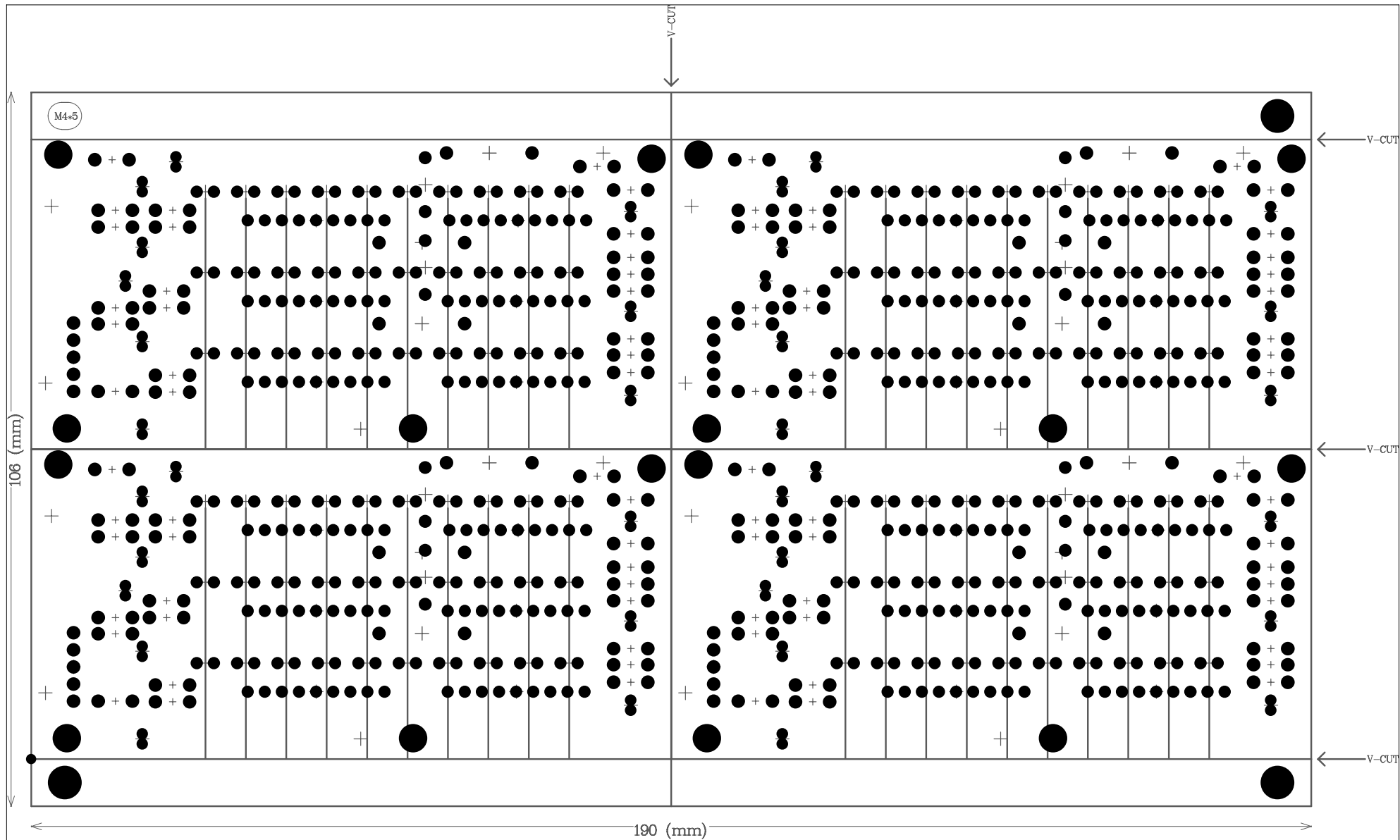


BOOTH

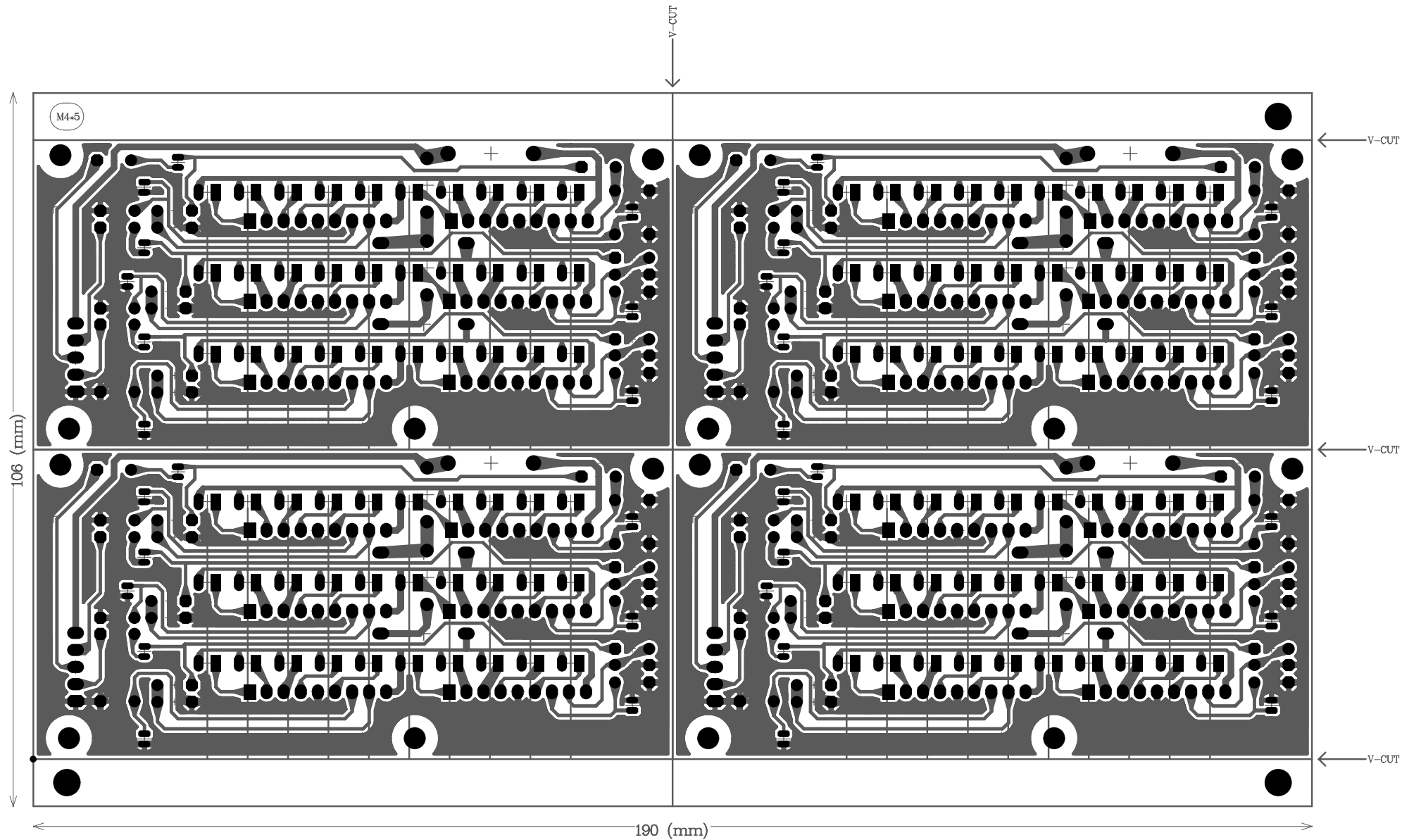
Title		
Size	Number	Revision
A1		
Date	2002.02.27	Drawn by
File: C:\Documents and Settings\384101138\Desktop\...		



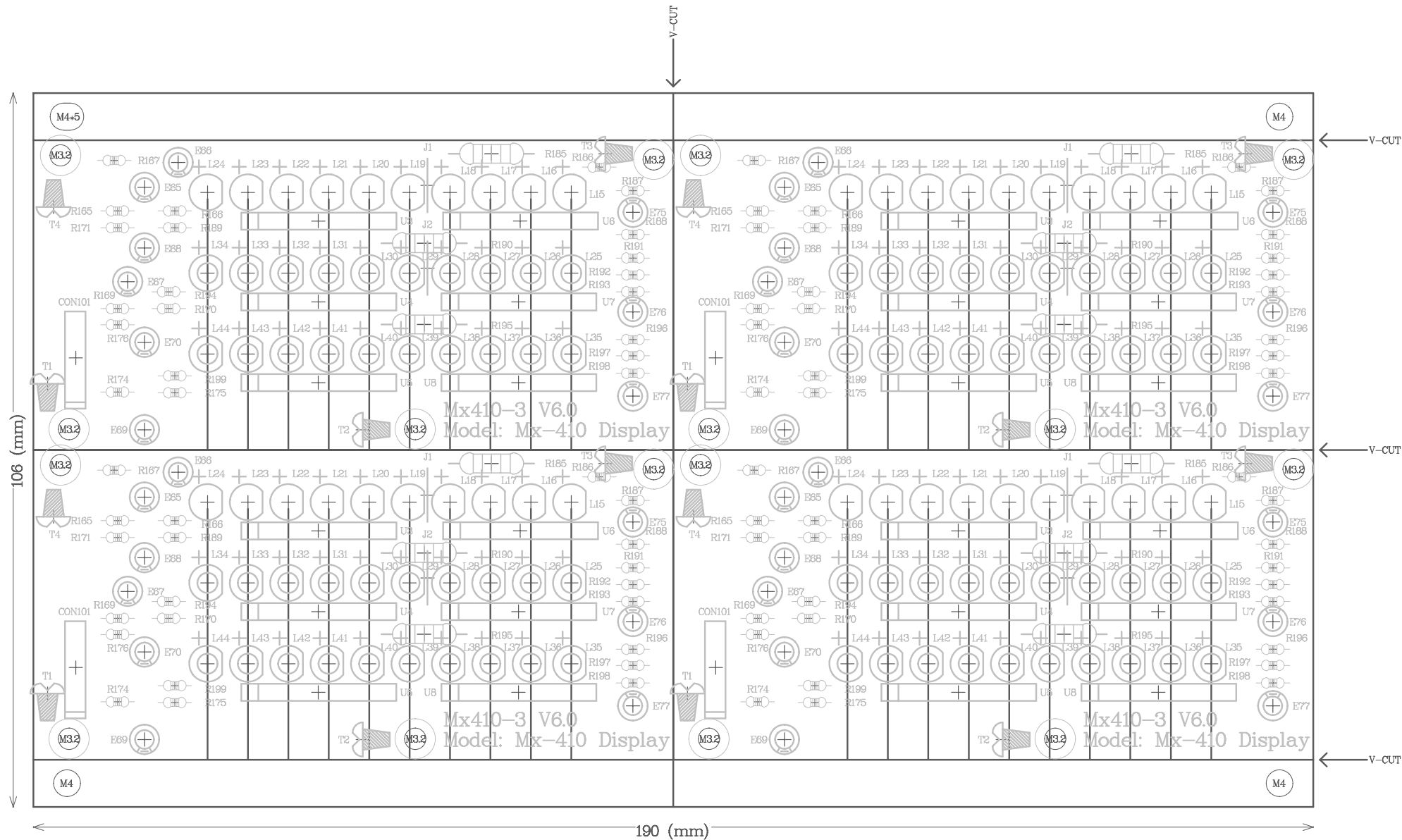
Rev	Number	Date	Author
1			



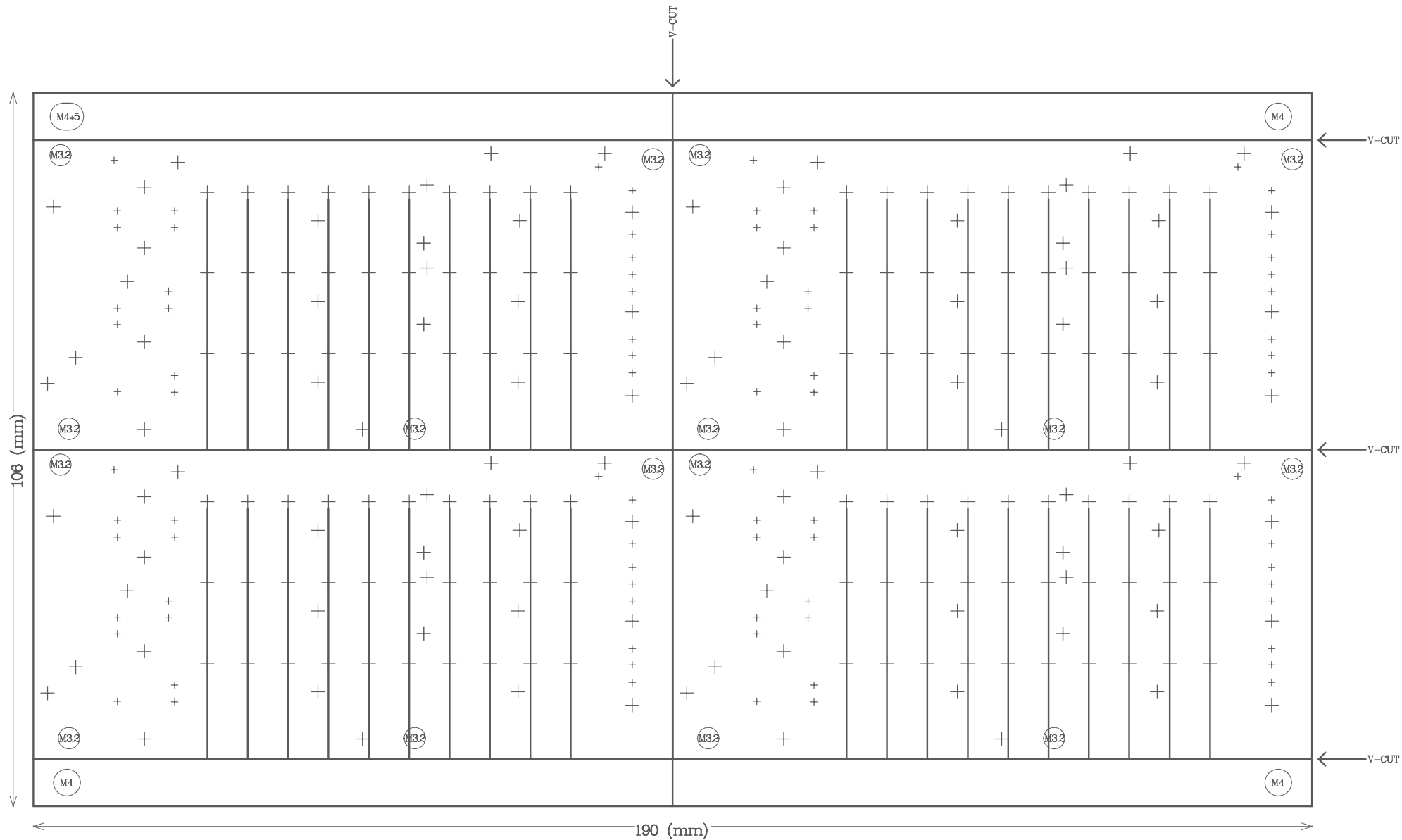
1. Base Material: 94V-0 OR KB (Double-Sided) 1.6mm
2. 1 oz. cu, 1 Sided
3. 2 Sided Green Oil (ROSH)



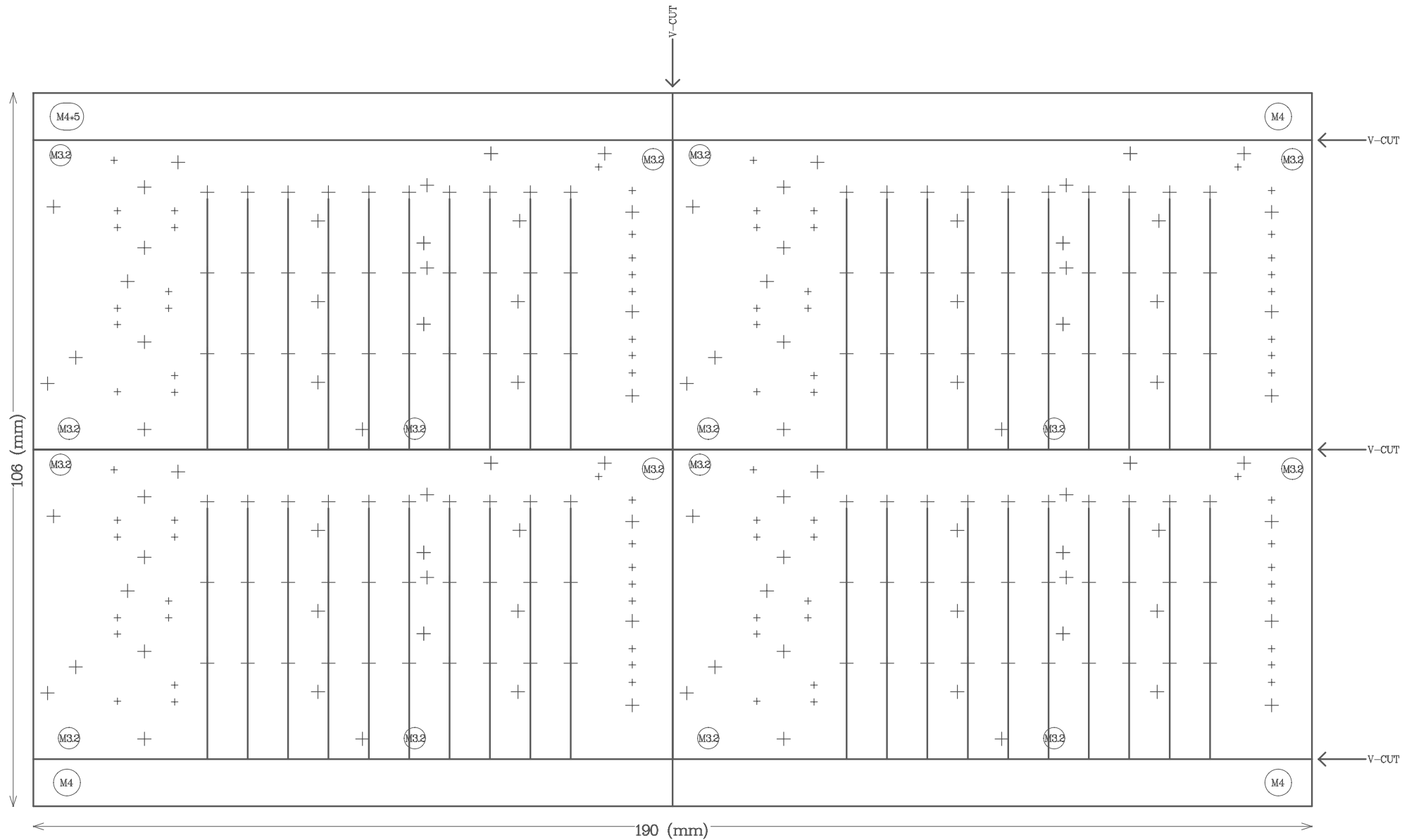
1. Base Material: 94V-0 OR KB (Double-Sided) 1.6mm
2. 1 oz. cu, 1 Sided
3. 2 Sided Green Oil (ROSH)



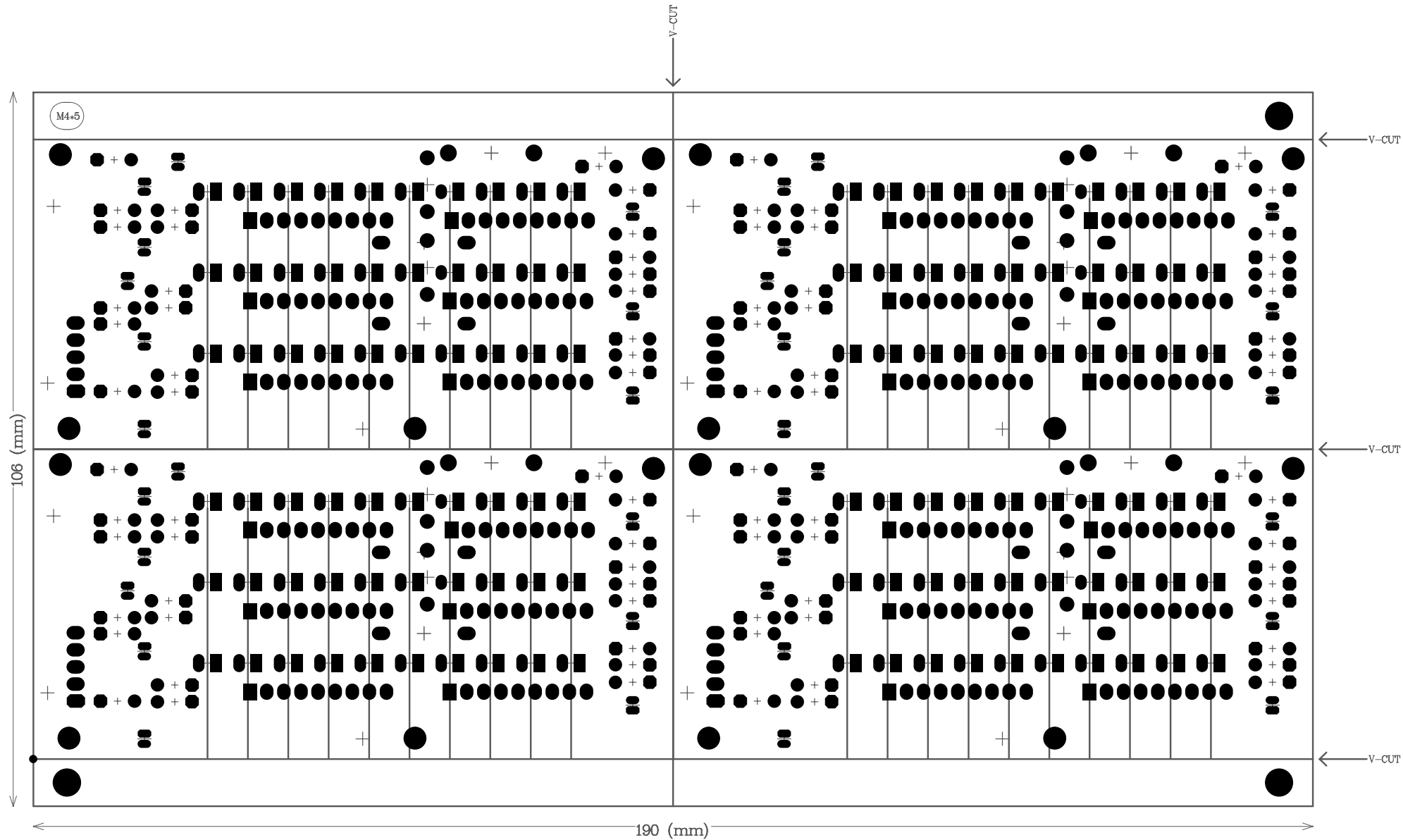
1. Base Material: 94V-0 OR KB (Double-Sided) 1.6mm
2. 1 oz. cu, 1 Sided
3. 2 Sided Green Oil (ROSH)



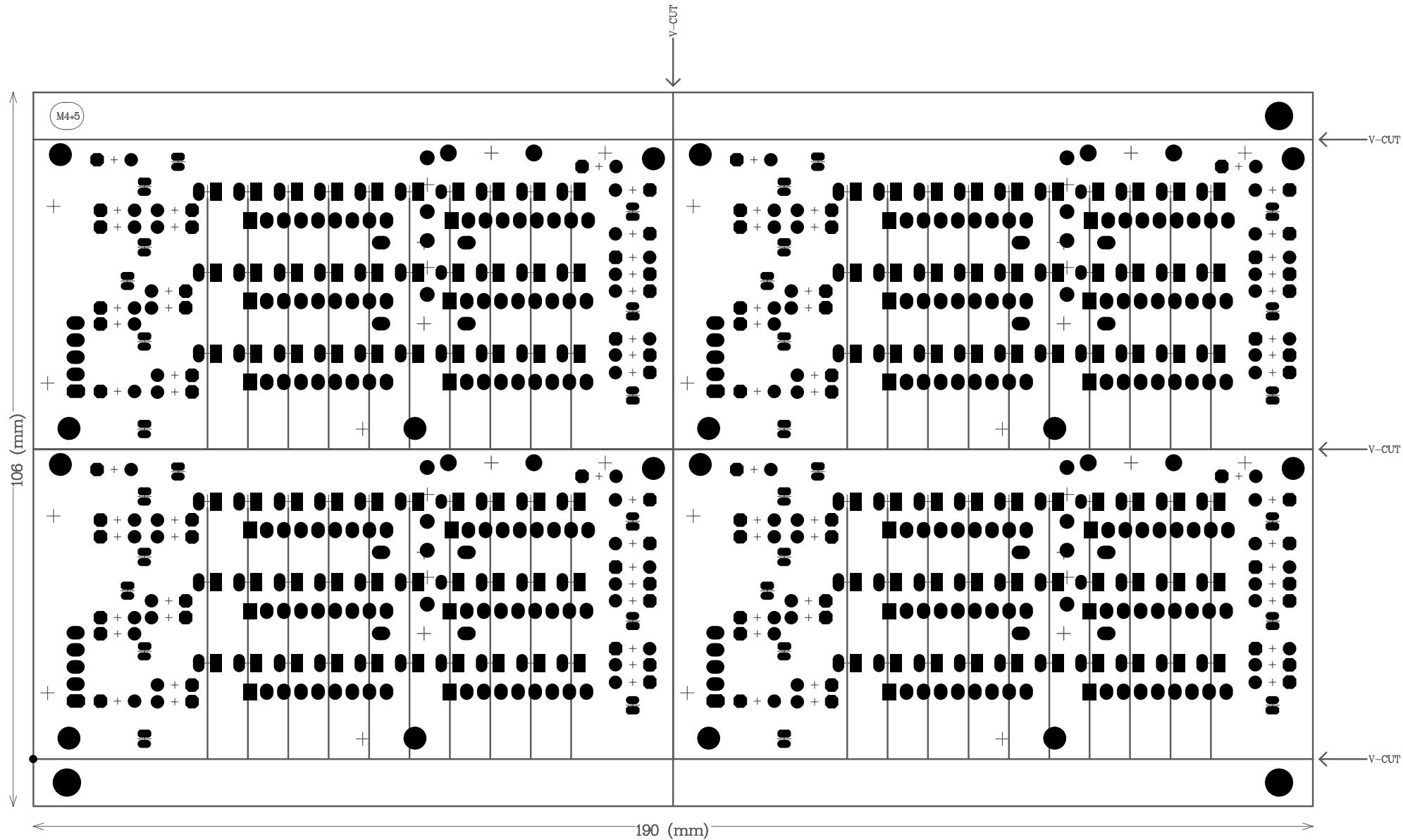
1. Base Material: 94V-0 OR KB (Double-Sided) 1.6mm
2. 1 oz. cu, 1 Sided
3. 2 Sided Green Oil (ROSH)



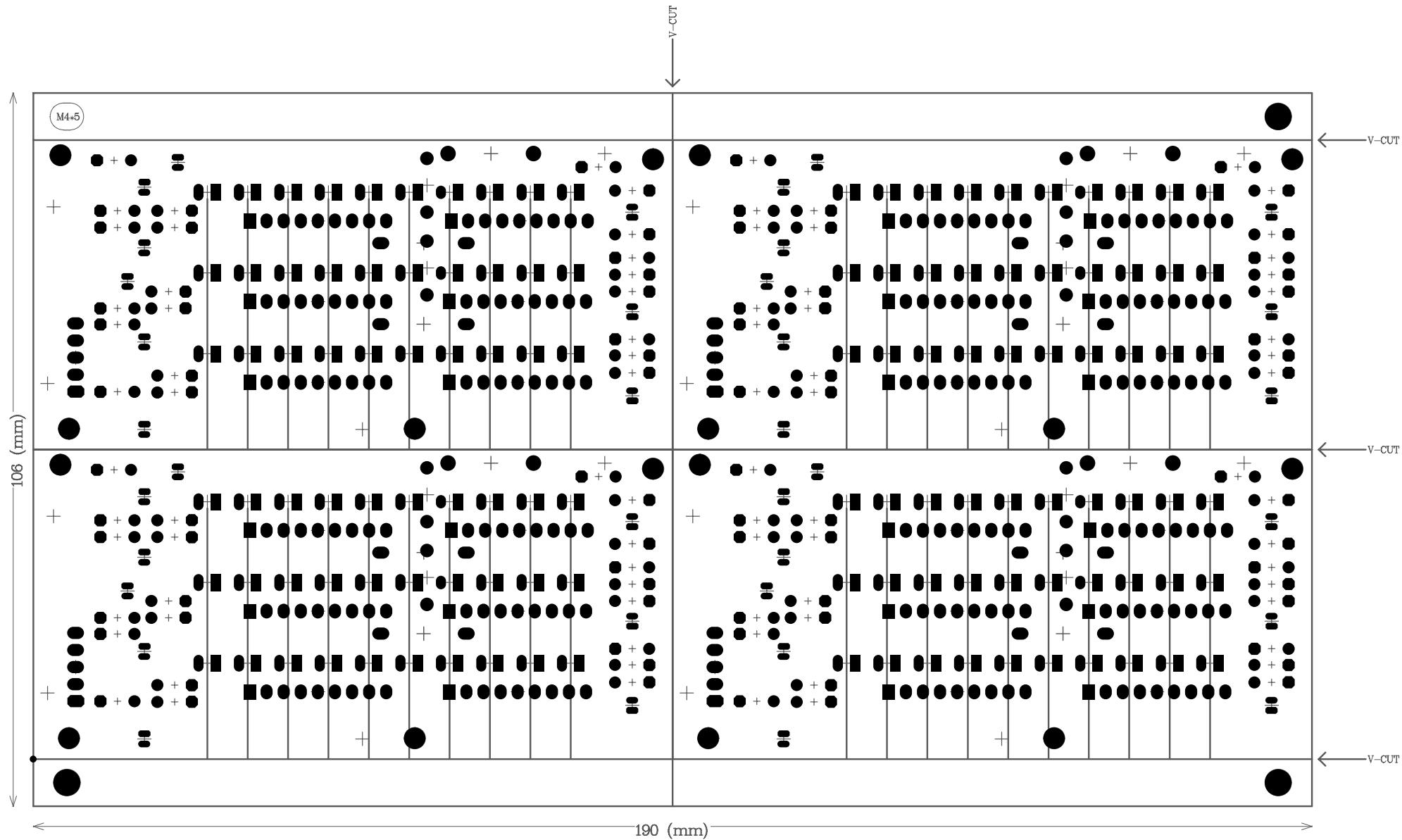
1. Base Material: 94V-0 OR KB (Double-Sided) 1.6mm
2. 1 oz. cu, 1 Sided
3. 2 Sided Green Oil (ROSH)



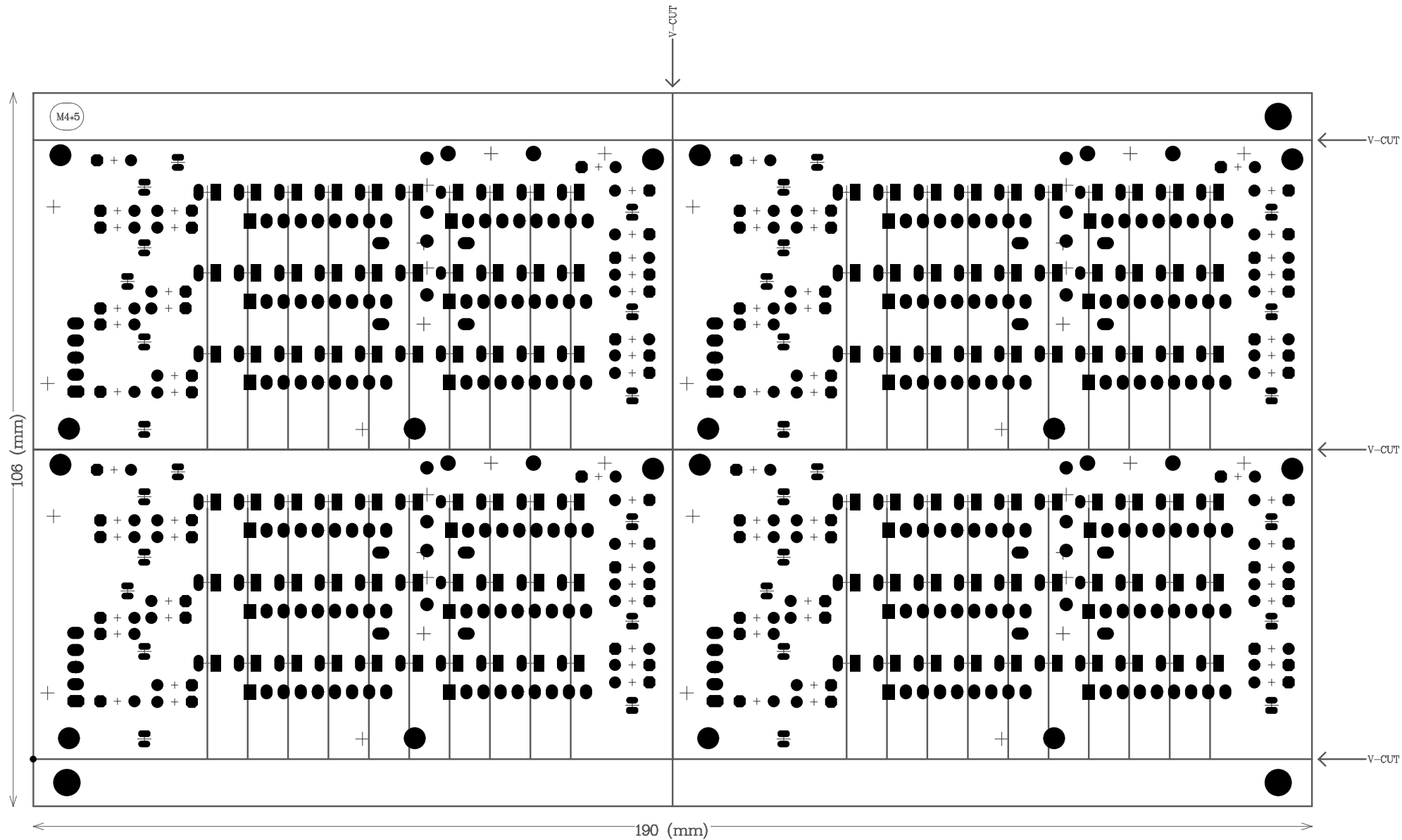
1. Base Material: 94V-0 OR KB (Double-Sided) 1.6mm
2. 1 oz. cu, 1 Sided
3. 2 Sided Green Oil (ROSH)



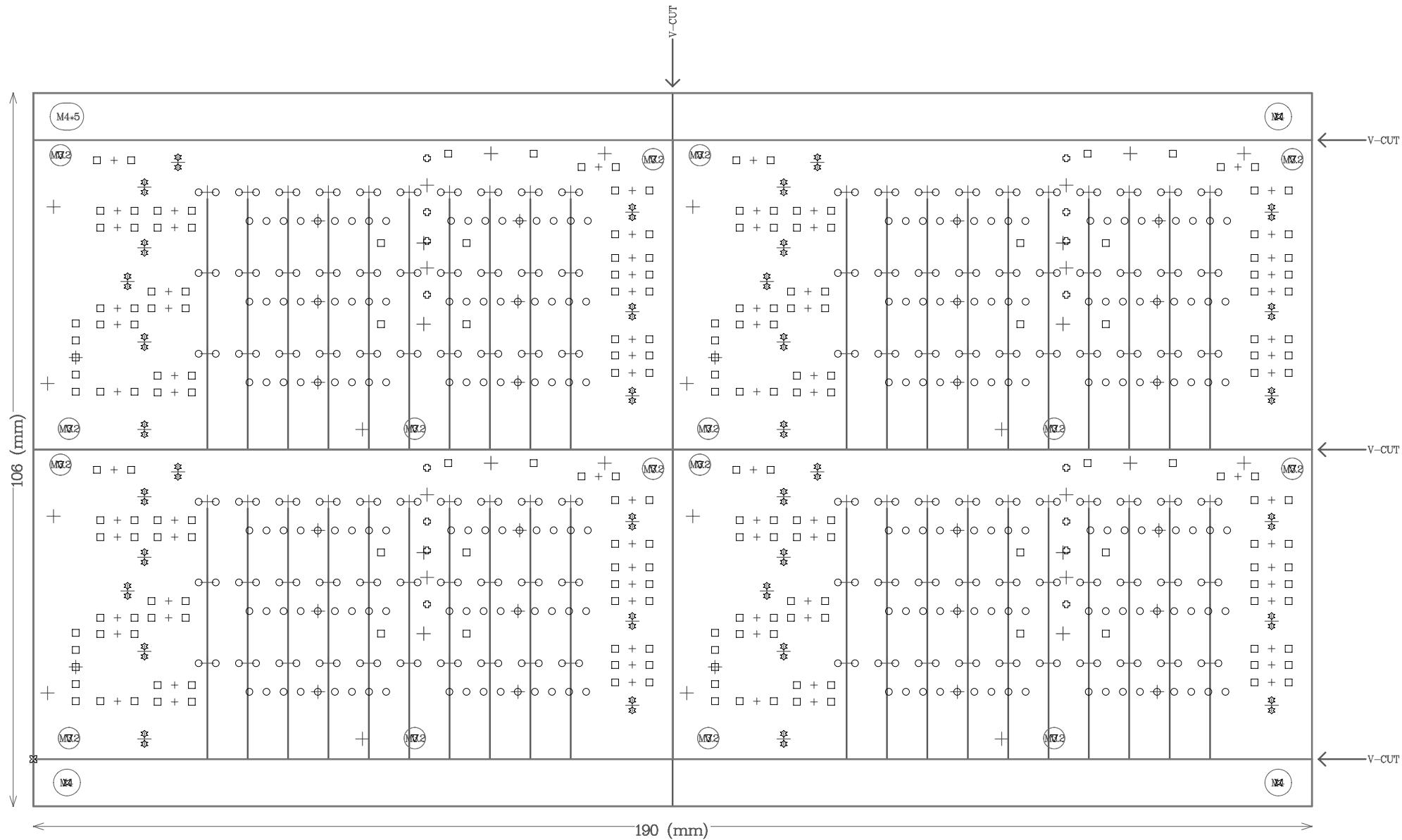
1. Base Material: 94V-0 OR KB (Double-Sided) 1.6mm
2. 1 oz. cu, 1 Sided
3. 2 Sided Green Oil (ROSH)



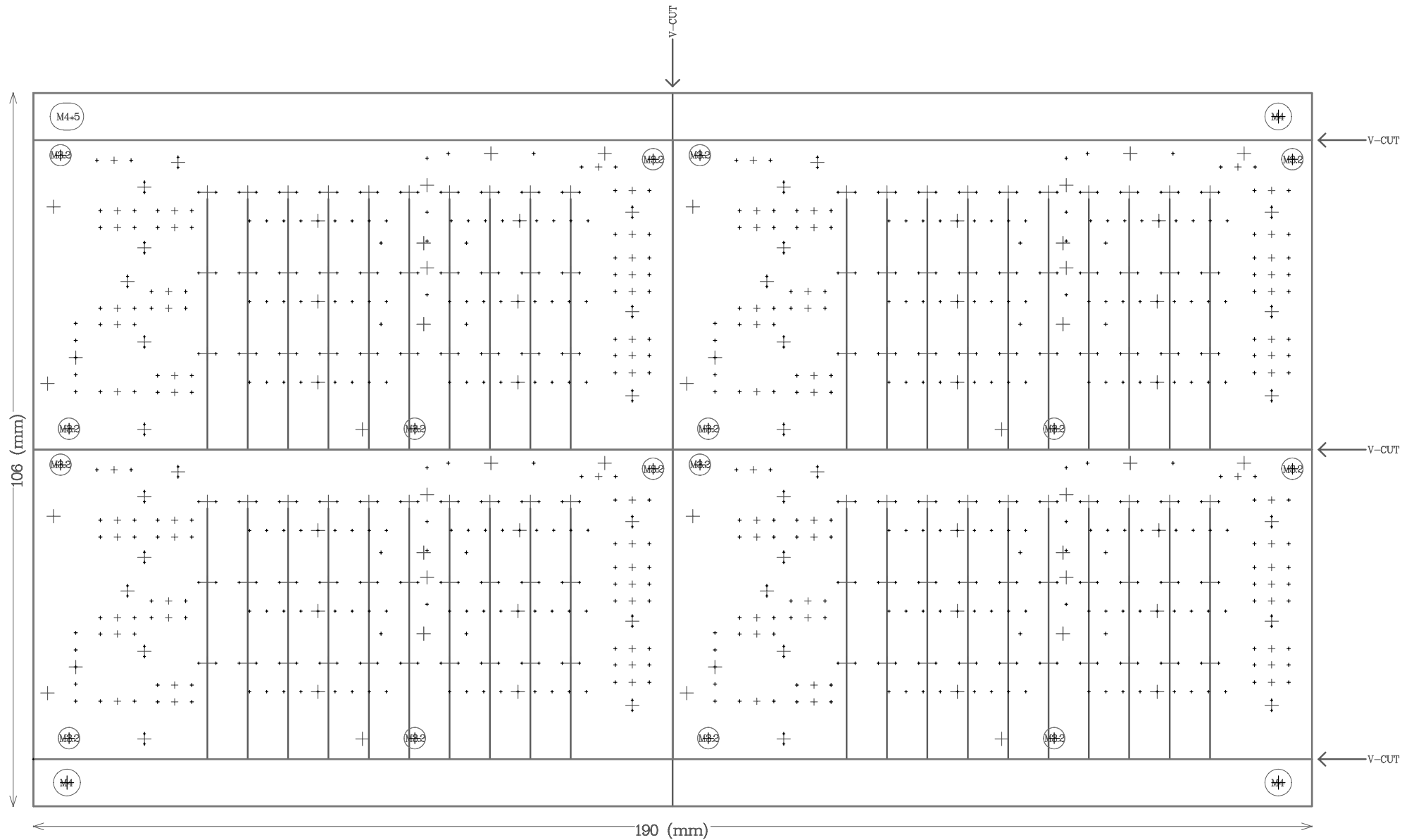
1. Base Material: 94V-0 OR KB (Double-Sided) 1.6mm
2. 1 oz. cu, 1 Sided
3. 2 Sided Green Oil (ROSH)



1. Base Material: 94V-0 OR KB (Double-Sided) 1.6mm
2. 1 oz. cu, 1 Sided
3. 2 Sided Green Oil (ROSH)



1. Base Material: 94V-0 OR KB (Double-Sided) 1.6mm
2. 1 oz. cu, 1 Sided
3. 2 Sided Green Oil (ROSH)



1. Base Material: 94V-0 OR KB (Double-Sided) 1.6mm
2. 1 oz. cu, 1 Sided
3. 2 Sided Green Oil (ROSH)